



# ecopixel®

2025

collaboration

*circular material & production*

01

**ecopixel.eu**



# ecopixel works for a safe and sustainable future with plastic materials that are recycled and recyclable.

ECOPIXEL is an Italian manufacturing company that recycles thermoplastic waste-material in order to obtain a recycled (1) and recyclable (2) material creating this way a true \*cycle in material-use.

ECOPIXEL Developed by Claudio Milioto and Jan Puylaert  
100% made in Italy production. © 2024

[www.ecopixel.eu](http://www.ecopixel.eu) | [info@ecopixel.eu](mailto:info@ecopixel.eu) | T. +39 345-2107207

# circularity

NOMAD chair design by Roger Cos © 2023  
for INTERNI Milano, Salone del Mobile 2023  
photo by Alvaro Ariso





**ecopixel collects, separates, chips into pieces and retransforms into products, what others throw away.**



ALEX Chaise longue, design by Alessandro Mendini © 2017. Permanent collection Groninger Museum - The Netherlands

With ECOPIXEL, after you, someone else will be able to recycle what you have recycled, so never again new extraction of raw materials will be needed. Recycling a mono-polymer means the material can be melted and re-melted an infinite number of times resulting in a forever circular material and creating this way a true “cycle” in material-use. As long as a material stays “clean” (read mono-polymer) it can be transformed at the exact temperature of the polymer involved and so, the material will never “burn” or deteriorate. Keeping polymers separate is thinking also about what happens after the recycled cycle.

ECOPIXEL is based on 25 years of experience in the plastic industry and more than 10 years of research and development in the recycled plastic field.

ECOPIXEL is a manufacturing company that recycles mono-polymer plastic typology, made from shredded waste material. The material is usually made with industrial thermoplastic waste but more and more also with collected material from any other fields including household-waste.

ECOPIXEL wants to promote the idea of NEVER mixing different plastic-waste-materials so to keep the plastics “clean” and ready for reuse each product-lifecycle. Apart from producing products in ECOPIXEL for other companies, ECOPIXEL also exists as a design-label that promotes their own designs.

ECOPIXEL has achieved the level of know-how & reliability needed to be accepted by the New Plastic Global Commitment / Ellen MacArthur Foundation, and reaches L2 level of furniture certification.

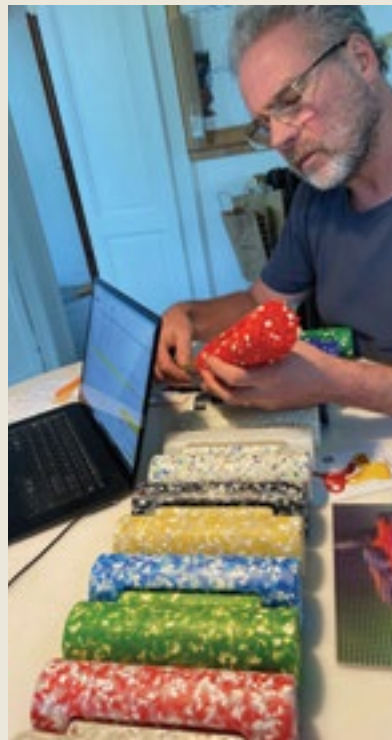






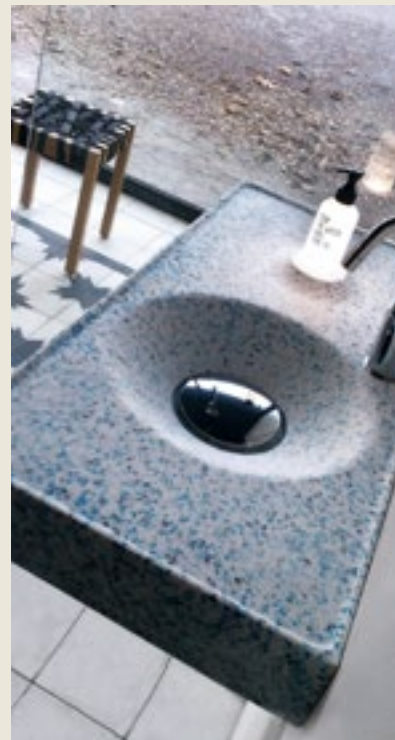
Materials

ECOPIXEL is a recycled thermoplastic monopolymer material. (1) 3D moulded products (2) SHEET tiles of various size thickness (3) Injected products. ECOPIXEL comes in a range of multi color & pixelated effects (except for the injected version). Following availability of waste materials it offers different possibilities



Wide range of Colors

From the world of "COLOR WASTE" we create melanges everyday. Some colors are the result of what we find in the trash-chain, others have been carefully built up with recycled plastics and customized pigments. Both ways result in a base of shredded plastics that we then mix into studied patterns.



Effects & Finishings

Research and tests allow us to offer different effects of different surface finishing procedures on the change in surface roughness and visual textures such as: TRASHPLAST, PROUST, TAPS, REVERSE, BLACK IS THE NEW BLACK, RINGS, POINT, PERT, ROUGH, OPEN SKIN among others.



1.



2.



3.

Images above:

1. Claudio Milioto, production manager / with Arch. Alessandro Mendini.
2. Mariandrea Zambrano, ecopixel's head of sustainability / POLAND
3. Jan Puylaert, ecopixel's creative director / holding LUNA lamp.
4. HOST by WET Italia, design Jan Puylaert & Mariandrea Zambrano. Nomination Compasso D'Oro 2012

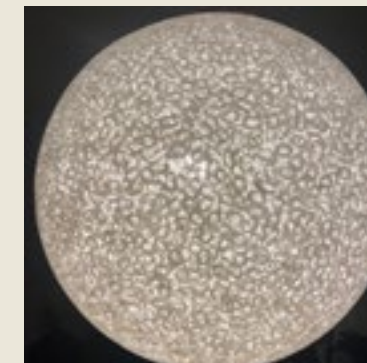
**"With ECOPIXEL, after you, someone else will be able to recycle what you have recycled, so never again new extraction of raw materials will be needed."**







ecopixel production services



## MATERIAL & PRODUCT DESIGN

### Production Services

#### **ECOPIXEL sheet material**

STANDARD SIZE 120×240cm/ca.

In various thickness 10/12/15/20 mm

CUTTING SERVICE

ECOPIXEL CNC and waterjet cutting:

Can cut to size to complex shapes

medium, large and small.

EXTRA SERVICE

Sheet material can be 3D shaped into complex forms in collaboration with several associated finish service.

#### **ECOPIXEL pressurized method**

Shock/ Medium-Large 3D shapes

STANDARD CATALOGUE SHAPES

**A vast quantity ready shapes (no tooling required) see PDF**

CUSTOMIZED SHAPES

**We offer full technical service to transform your idea in the needed technical drawing / tooling / prototype & sample-production.**

**For any production we can arrange customized exclusive productions including packing and transport.**

#### **ECOPIXEL plastic injection**

Small size complex 3D

objects CUSTOMIZED SHAPES

**We offer full technical service to transform your idea in the needed technical drawing / tooling / prototype & sample-production.**

**For any production we can arrange customized exclusive productions including packing and transport.**





1907 Art deso lamp - design by Jan Puylaert. Rosanna Orlandi selection 2021



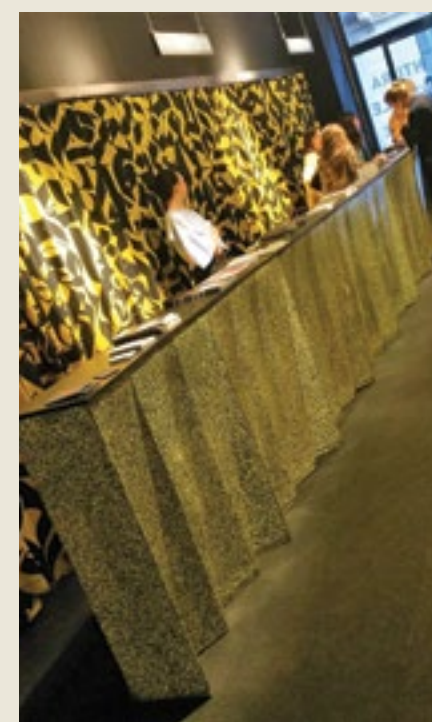
SOLAR PANEL - 1st prize Plastics Recycling Awards Europe. Amsterdam.

# ecopixel develops recycled plastic materials for use in architecture and design.

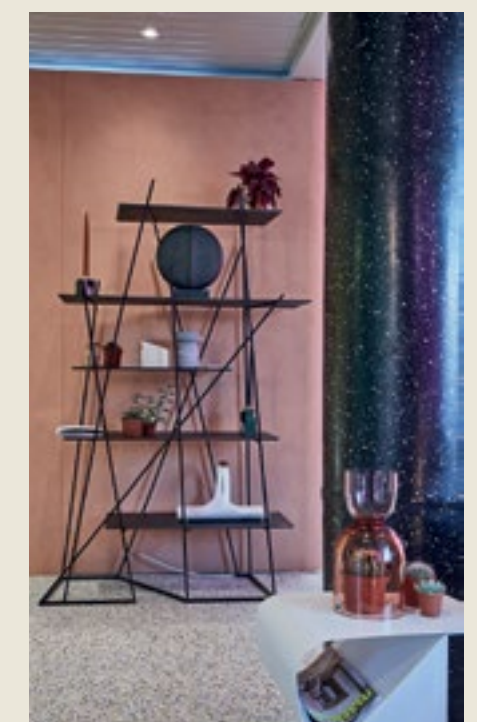
ECOPIXEL is specialized in customized productions in multicolor recycled/circular plastic materials. We produce any customized project in 3D-shaped blow mouldings / Sheet materials including CNC / Injected plastics / Vacuum shaped objects.

We arrange technical follow up of your project-drawing until the tool-making to the final production, with the possibility to arrange packaging and transport.

In our continuous research into waste plastics, we have created a new range of materials based on a 'multiple layer' concept. with this approach it is possible to create a single material that builds up in different layers. different layers with different densities or even with different structural qualities can be combined. this variation affords countless possibilities, one of which includes a sound-absorbing material..



Ventura - Central station Milan



Marie Claire Maison



# "ALEX, my Chaise Longue, looking at Impressionism".

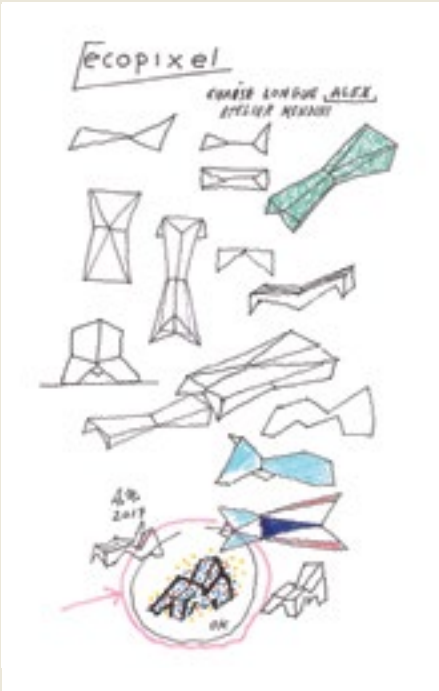
## Alessandro Mendini



Alessandro Mendini photo by max&douglas



ALEX Chaise longue design by A. Mendini (avobe)



**MENDINI PROUST Pattern**  
**In the specific size 12mm pixel & color mix = 7 colors + white**  
The resulting structure/material is a highly advanced achievement in the field of plastics and recycling and could only have been achieved with the expertise acquired over 10 years of pixel development in tools, research, and test production.

**ECOPIXEL transforms polyethylene waste into a work of 'Pointillism'. "The remarkable qualities of ECOPIXEL® has been an opportunity for powerful expression through texture and color, and has given rise to an exciting new multi-colored pixel based approach"**  
**"A chaise longue that, placed outdoors in the garden or by the pool, will blend with the colors of foliage and flowers in an impressionistic manner"**

**Alessandro Mendini**

Alessandro Mendini / Atelier Mendini : 'King of pixelated design' has specially designed the Chaise Longue daybed 'ALEX' to commemorate the launch of ECOPIXEL. This iconic Memphis revival aims to be "A pièce unique" for each owner, in a limited edition exposed in several museums and fares around the world.

Structural appearance : Powerful geometric forms are derived from a combination of polygonal plane surfaces with dynamic lineal edges. The ECOPIXEL's innovative 'pressurized rotational production method' enables a crisp, folded form with sharply defined origami lines, resulting in a contemporary appearance that is radically different to traditional rounded surfaces that are a by product of other production techniques.

In 2016, we had the pleasure of working with Alessandro Mendini, who designed a special PROUST pixel texture in recycled plastic, to be used in the Chaise Longue he designed for us. Due to technical difficulties, we couldn't produce the pixel he wanted back then. Today we managed to create a pixel in the PROUST color range that he designed, produced in 98% recycled plastics (where 2% represents the mere pigment).

The material is 100% recycled pigmented polyethylene PELD industrial waste from packing foil. The diameter of 12 mm was studied according to specific indications of Alessandro Mendini © 2017, In its magnificent 7-color plus white color mix.





1. EYE D300 – 6-inch coaxial, horn-loaded, rear-facing bass reflex, passive speaker unit. Research & development ECOPIXEL by Joseph Szall ©2018. “Rossana Orlandi Selection”

Thanks to a deliberate mixture of waste materials, Ecopixel obtained a specific version of layered recycled plastics, creating a sandwich material going from a rough inner layer towards an almost high-density outer layer. The high sound absorbing capacity of this material led to the “ECOPIXEL AUDIO” material, ideal for speaker enclosures - especially since Ecopixel can be shaped into any, even hollow, design.



2. LASTRA – Ecopixel promotional project 2019. Swivel standing 3-way, 12-inch speaker with down-facing bass reflex, active amplified Bluetooth speaker unit.

### EYE D300

In 2018, Joseph Szall, an Italo-Hungarian specialist in audio technology & audio designer at Ferrari Automobile designed a spherical speaker in ECOPIXEL AUDIO giving birth to this new application. The round shape combined with the specific hardness of the material proved to absorb the internal sound waves just as was expected and therefore emit cleaner bass performance.

**EYE D256 BT** - Soon after, Ecopixel's first commercial version (EYE D256) was developed integrating a simple Bluetooth receiver amp to enjoy high-quality music “without instructions”. Thanks to the latest Italian-made coaxial SICA speaker unit, featuring a neodymium 1.5” treated silk dome tweeter and a 5.5” rubber surround double asymmetric damped cone woofer (DAR), a frequency response of 60hz to well over 20 kHz (+/- 2dB) was achieved. The incredible clean bass response was obtained thanks to the Ecopixel AUDIO material enclosure that with only very little added sound absorbing materials translates the electrical input into a warm but firm clean bass sound. EYE comes with a spike stand that permits “every” direction setting so that EYE can be used from furniture as well as floor.



3. EYE D256 BT – 5,5 inch coaxial, rear-facing bass reflex, active class D amplified Bluetooth speaker unit. By Ecopixel ©2020 (for sale at Ecopixel. shop)

# ecopixel AUDIO - Bluetooth stereo made from recycled plastics

DRUM D260 BT – 6,5 inch coaxial, rear-facing bass reflex, active class D amplified Bluetooth speaker unit by Ecopixel ©2021

Rosanna Orlandi selection

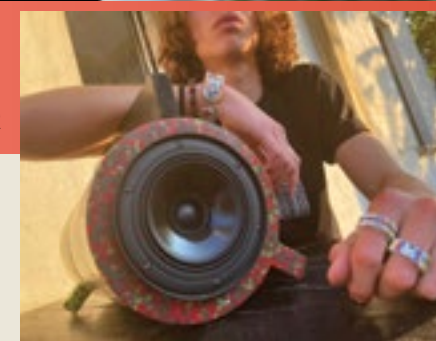


15



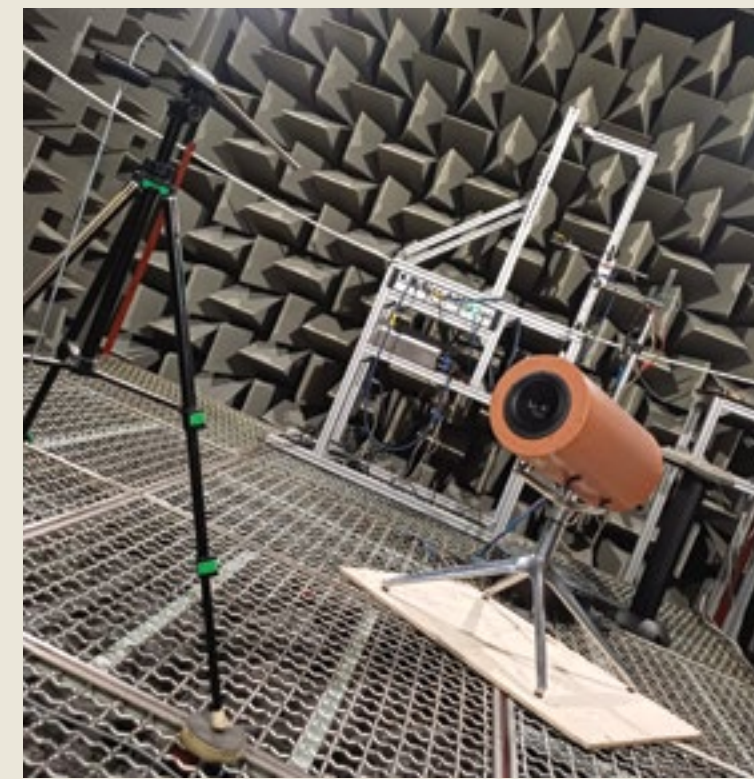
### GHETTO BLASTER

4-5. GHETTO BLASTER  
Promotional project 2019  
Bluetooth portable design  
offering 120 watts of RMS  
“portable power”  
DEZEEN MENTIONING 2019



### DRUM D260 BT

Magically swivel-standing DRUM uses similar technology. The slightly larger version of the coaxial driver (SICA 6,5 inch coaxial) now extends the bass region down to 50Hz. The swivel stand allows it to pivot in all directions.







The translucency of Ecopixel allows to create atmospheric lighting and lamps, adding definition to a form, or creating back-light. It is possible to explore infinite color options and transform the light with them.

We work on the perfect translucency that gives environmental soft access and classy atmosphere.

# ecopixel lights, illuminates.

**ECOPIXEL TRANSLUSCENT**  
illuminates with high uniformity.

The material thickness that we deliberately create for lighting purposes gives a magical grazing light ideal for common house spaces as for commercial places, restaurants and hotels.

We carefully clean the material to guarantee an unsullied and homogeneous light.



Normann Copenhagen © 2022  
Pix Lamp collection, design by Simon Legald

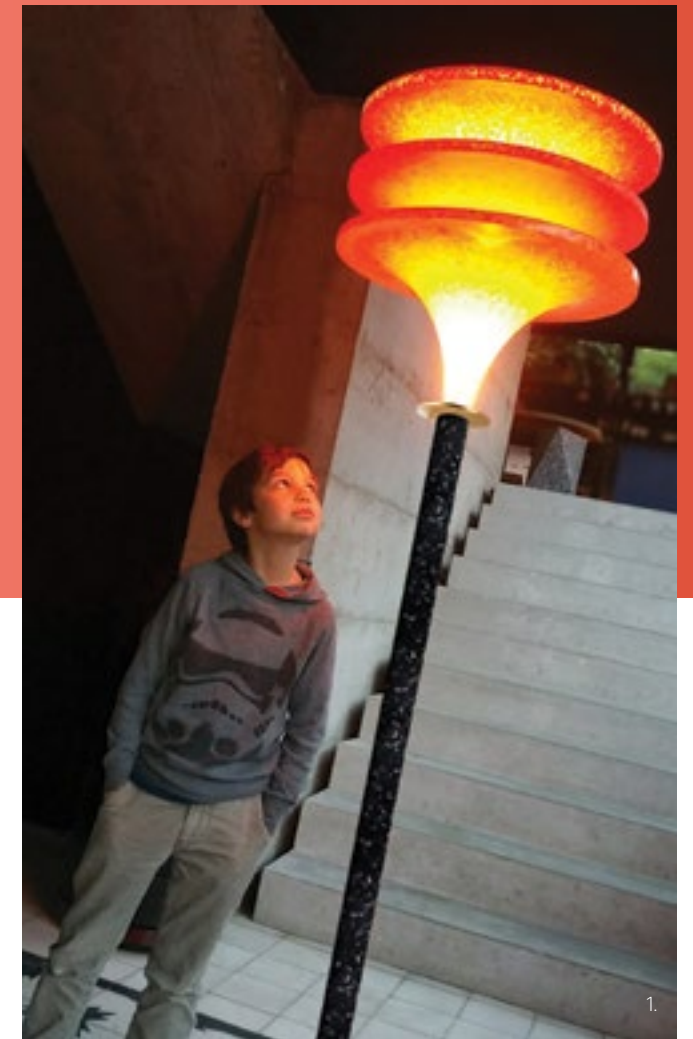


A reinterpretation of the archetypical spherical pendant lamp, the recognizable, timeless silhouette is used for the design of the Pix Lamp, while the captivating surface of the lamp gets its unique look from its composition of recycled plastic waste.

## 1907 FLOOR LAMP

Although "plastics" were invented long before 1800, it was not until 1907, with the invention of Bakelite, to become a common good. Bakelite was the first synthetic "plastic" material not derived from living matter and therefor available for cheap mass production.

Who would have ever thought this invention would have led to the disastrous situation we live in today? Plastics seem to have ruined the world! Yet plastics are harmless as they are wonderfully recyclable. This floor lamp, deliberately designed in the 1907 style proves that recycled plastics can be as luxurious as any other material.



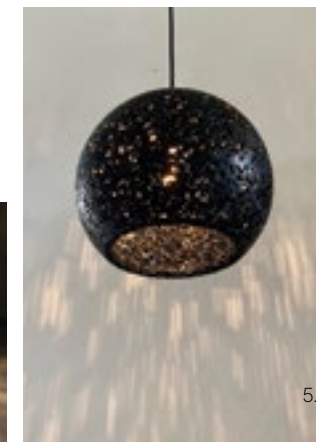
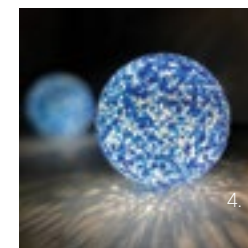
3. Politecnico di Milano - Area Tecnico Edilizia - Building EN:LAB. Architecture Daniel Marcaccio.



1. 1907 FLOOR LAMP
2. ECOPIXEL LUNA Ceiling lamp
4. ECOPIXEL BLACKMOON 30cm diameter.
5. ECOPIXELBLUEMOON 16cm diameter

## ECOPIXEL OPENPIXEL

Open pixel lamps magically shines out its light in all directions creating a high-quality illumination while reflecting its color on all objects around. It can be put on any furniture or even on the floor.







1.



2.

ECOPIXEL developed and produced NOMAD; a stool with simple and functional geometries, designed by spanish designer Roger Cos.

NOMAD connects with the brand-new OPEN SKIN\* by ECOPIXEL © 2023; developing the entire project technically.

OPEN SKIN is a special effect of superficial structure that leaves open pixels in its material skin. OPEN SKIN obtains a magical interaction with light passing through, giving visual lightness to the object.

This 3-dimensional texture allows (rain) water to simply pass through. OPEN SKIN is entirely

made from recycled & recyclable plastics making NOMAD a circular product.

ECOPIXEL produces NOMAD in RED & YELLOW PERT (Polyethylene of Raised Temperature Resistance). This OPEN SKIN is a special effect of superficial structure that leaves open pixels in its material skin. Open Skin texture allows the colors to be intense and saturated and assures higher flexibility to the material, Giving to the object a comfortable feeling when used.

NOMAD has been designed to last over time and contribute to the fight against single-use products and their negative consequences on the environment.

## NOMAD



3.



Images above:

1. Open Skin is made of PERT: Polyethylene of Raised Temperature Resistance / 100% recycled post industrial waste.
2. can be easily transported manually
3. Is stackable

**NOMAD is a lounge chair made from ecopixel "open skin" waste mélange. 100% circular post-industrial surprisingly comfortable recycled plastic.**



**Consumer (VAT included)**  
RECOMMENDED CONSUMER PRICE  
**€ 343,00**

NOMAD is designed by Roger Cos





# DELTA 50 side table

The iconic Ecopixel "DELTA" series shines a unique identity as its shape magically changes from every different side. Its artistic look will give your house a special touch. Please notice that the colors shown in the photos are NOT standard. The tonalities shown came from the pick-of-the-day color concept where randomly available recycled material is used. DELTA 50 features 3 feet and can be used both indoors and outdoors ideally as a side-table or extra chair.

## DIMENSIONS

39×34×49h cm

## Consumer (VAT included)

RECOMMENDED CONSUMER PRICE

€ 171,00

## MULTIPLE ORDERS

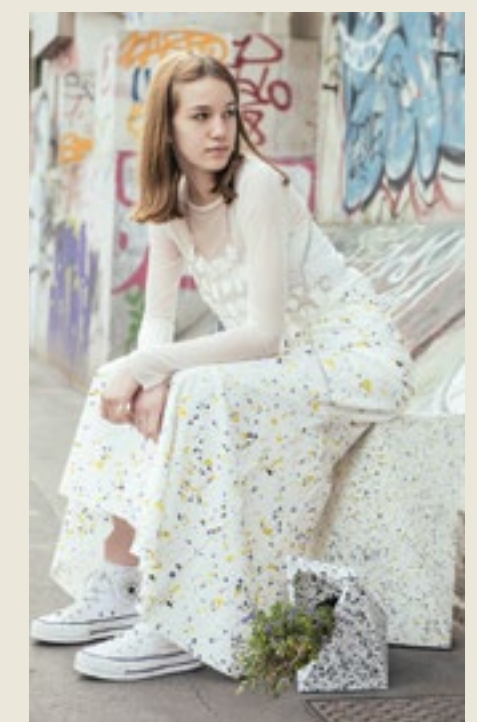
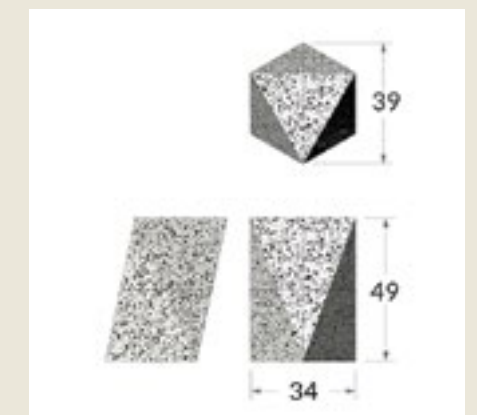
\*singular packed

BOX : 33 × 37 × 55h cm | 4,0kg

-

Multiple packed 24 pcs

europallet 120 × 80 × 220h





# DELTA 50 planter

This “PLANT” vase hosts a D80x-120mm watertight vase space on top that “flowers open” into a D160mm vase neck. Ideal for small plants or kitchen grass plants. Can be used both indoors and outdoors\*.

### DIMENSIONS

39×34×49h cm

### Consumer (VAT included)

RECOMMENDED CONSUMER PRICE

€ 171,00

### MULTIPLE ORDERS

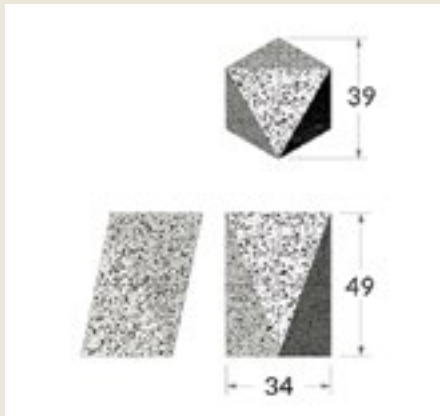
\*singular packed

BOX : 33 × 37 × 55h cm | 4,0kg

-

Multiple packed 24 pcs

europallet 120 × 80 × 220h



# DELTA 23 flower vase

This flower vase was designed as an homage to the iconic DELTA vase by “Mart van Schijndel”. Its shape and size ideally host a small number of tulips but can be used for any type of flower. Watertight.

### DIMENSIONS

20 × 17 × 23h cm

### Consumer (VAT included)

RECOMMENDED CONSUMER PRICE

€ 58 ,00

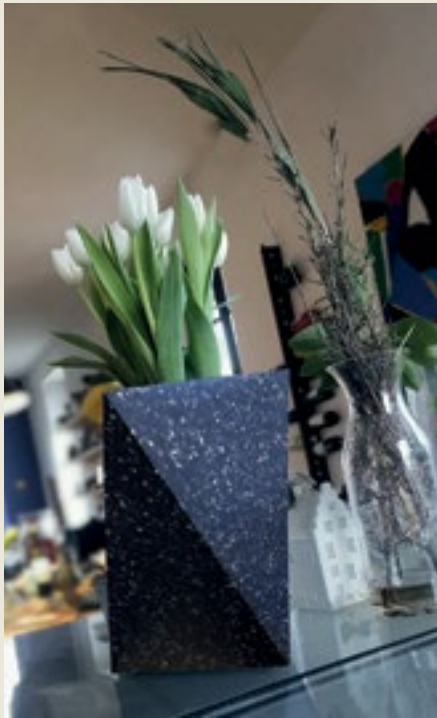
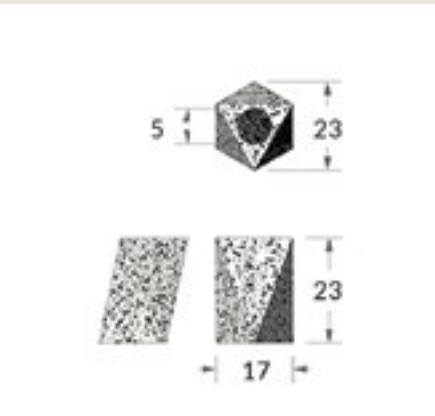
### MULTIPLE ORDERS

\*singular packed

BOX: 24.5×18.5×21h | 1,0kg -

Multiple packed / 5 pcs

Box 37×33 × 55h cm





# DRUM 50 side table

Cylinder/Stool is the perfect, to low stool to be used alongside dining or coffee tables for that ultimate cosy corner in your venue.

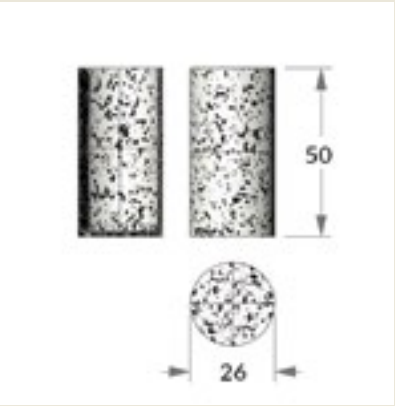
### DIMENSIONS

Diemater 26 × 50h cm

Consumer (VAT included)  
RECOMMENDED CONSUMER PRICE  
€ 139,00

### MULTIPLE ORDERS

\*singular packed  
BOX : 30 × 30 × 55h cm | 4,0kg  
Multiple packed 24 pcs  
europallet 120 × 80 × 180h cm



# DRUM 60 column

An upright pillar, in its typically cylindrical shape, is used to be standing alone as a supporter of a monument or special object of the house. together with DRUM 50, thanks to different heights, works perfectly as supporter pillars on shops in a dynamic way.

### DIMENSIONS

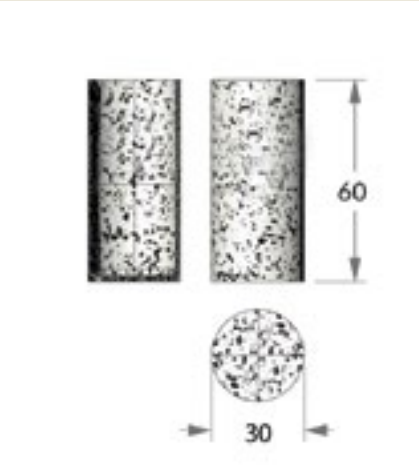
Diameter 30 × 60h cm

Consumer (VAT included)  
RECOMMENDED CONSUMER PRICE  
€ 195,00



### MULTIPLE ORDERS

\*singular packed  
BOX : 33 × 33 × 60h cm | 4,0kg  
-  
Multiple packed 18 pcs  
europallet 120 × 80 × 200h





# BOX stool & side table

The simple shape of rectangular geometry fits any interior. The BOX stool size was studied to offer the highest multiple packing amount per EU pallets 120×80cm; fitting 44 pcs per pallet. This way less transport cost is wasted.

## DIMENSIONS

29×29×49h cm

## Consumer (VAT included)

RECOMMENDED CONSUMER PRICE

€ 171,00

## MULTIPLE ORDERS

\*singular packed

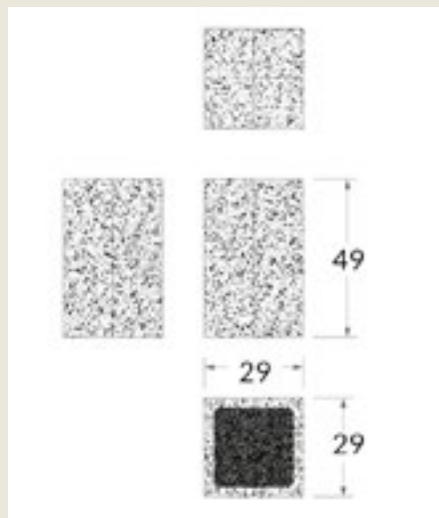
BOX : 32 × 29 × 49h cm | 4,0kg

22 pcs

europallet 120 × 80 × 120h

44 pcs

europallet 120 × 80 × 220h



# BOX column & bar stool

Another rectangular geometry, the BOX column 79 cm high.

## DIMENSIONS

29×29×79h cm

## MULTIPLE ORDERS

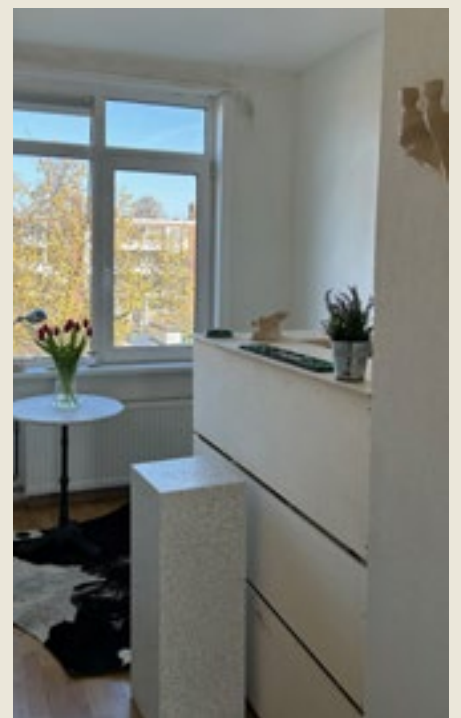
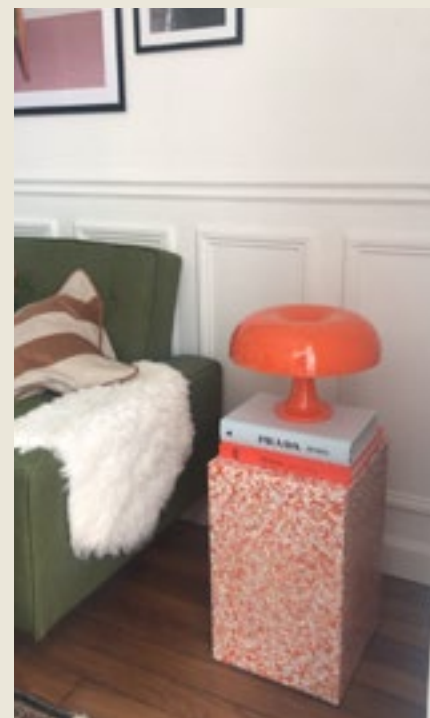
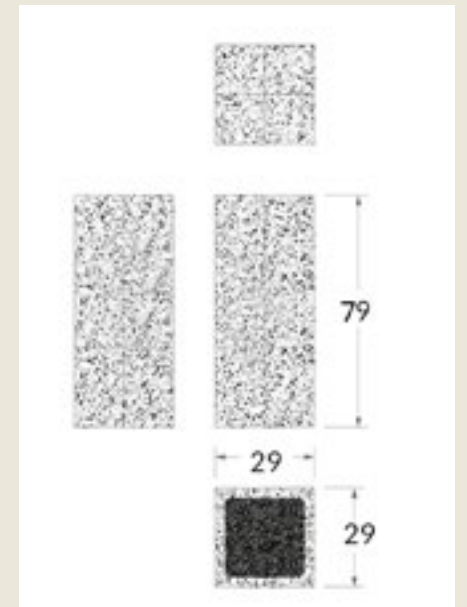
18 pcs

europallet 120 × 80 × 218h

## Consumer (VAT included)

RECOMMENDED CONSUMER PRICE

€ 195,00





# SWIVEL stool

This stool has a comfortable seating size (diameter 38cm). Its ergonomic grip around the perimeter of the chair gives an easy-to-move function. Swivel has been specially designed for fitting rooms and can be customized in any color for each brand identity. Also fits perfectly in a traditional table sitting as a great addition to keep your venue looking contemporary with that added comfort.

### DIMENSIONS

Diameter 38×50 cm

### Consumer (VAT included)

RECOMMENDED CONSUMER PRICE

€ 195,00

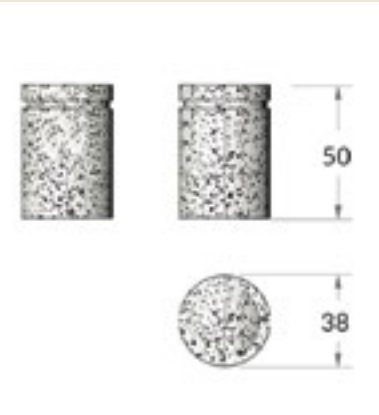
### MULTIPLE ORDERS

\*singular packed

BOX : 40×40 ×50h cm | 5,0kg

Multiple packed 24 pcs

europallet 120 × 80 × 225h



# PET BOWL

GOKU and ROCKY are two bowls that come together in the same color. For water and/or food or any diet that your dog deserves. The bigger bowl features its second ring to avoid spilling around the floor.

### DIMENSIONS

GOKU has a diameter of 37cm

ROCKY has a diameter of 17cm

Both have an internal diameter of 14cm and 4,5 deep.

Its weight is 0,7kg

### Consumer (VAT included)

RECOMMENDED CONSUMER PRICE

€ 73,00

### MULTIPLE ORDERS

The set of 2pcs. / 12 sets

Multiple packed 40×40×15h cm





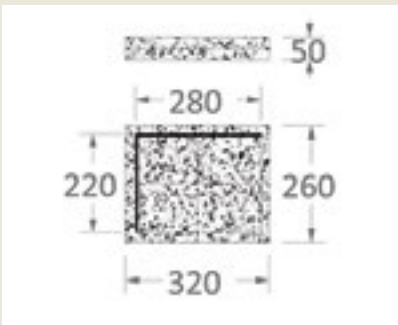
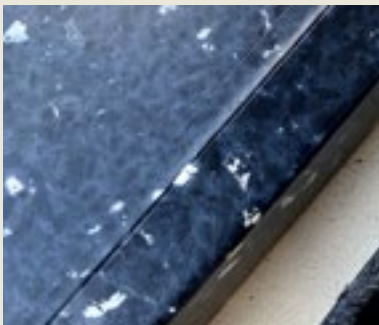
# TRAY 30

Tray with a thin border, gives a touch of elegance to the product.

DIMENSIONS  
30×30×5 cm

Consumer (VAT included)  
RECOMMENDED CONSUMER PRICE  
€ 49,00

MULTIPLE ORDERS  
12pc -



# TRAY rim

Our flat, shallow container with a raised rim, typically used for holding small items or loose material. Lovely as well for exhibiting articles.

DIMENSIONS  
26 × 32 × 5h cm / 0,8 kg  
Consumer (VAT included)

RECOMMENDED CONSUMER PRICE  
€ 80,00

MULTIPLE ORDERS  
9 pcs  
Multiple packed: only one color per box. 40×40×40h / 4,8 kg







# COLLABORATIONS

ECOPIXEL has been commissioned for the production of display material for different brands with corporate colors and customized textures. Forms eventually defined by its sense of functionality & ultra-clean lines



ECOPIXEL creates a deep blue installation for UNIQLO, completely made of recycled plastics. For the presentation of "DRY-EX", the super-breathable garment collection, has been the reason to organize this free entrance exposition in the garden of UNIQLO, Piazzale Cordusio, Milano



# normann COPENHAGEN

## BIT STOOL

Stool and side table

## NORMANN COPENHAGEN

Company established in 1999 with the mission to create original and innovative products in a simple and contemporary design that withstands the test of time. Their products are sold in more than 80 countries throughout the world.

Normann expands with a variety of new additions to the popular Bit collection,

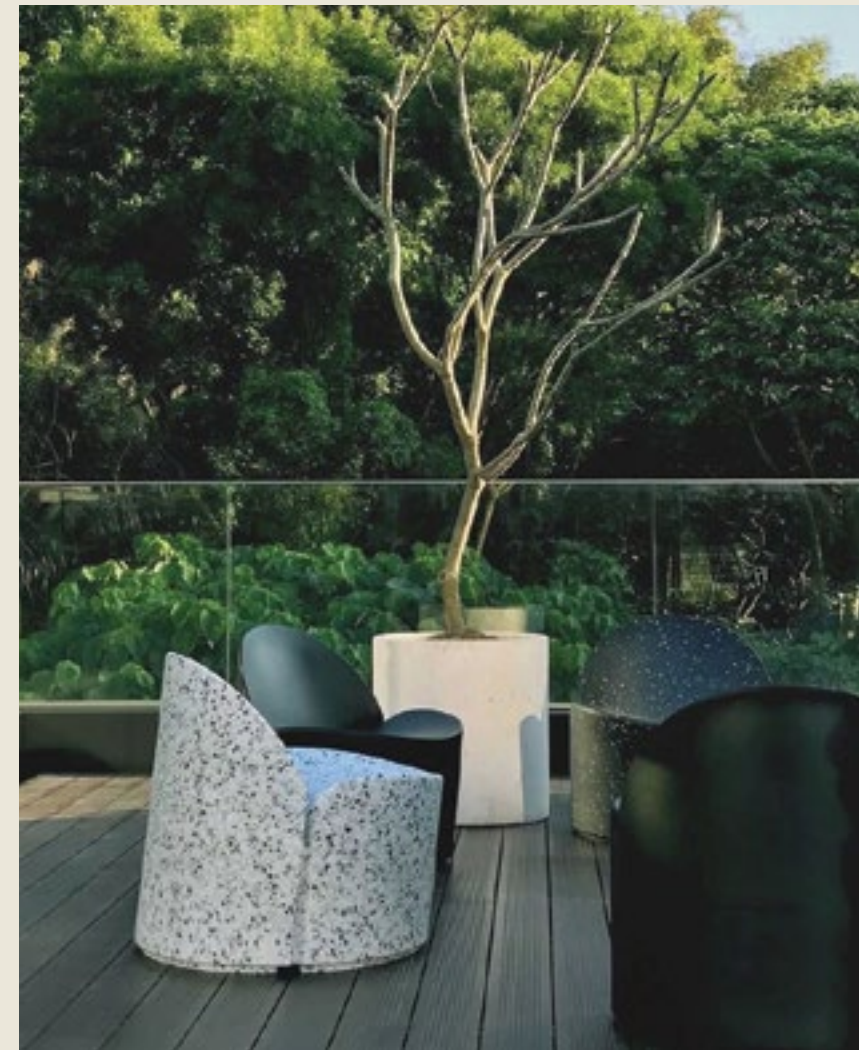
sharing the same pixelated aesthetic, playful charisma and resourceful material composition:

Bit Lounge Chair, Bit Barstool, Bit Side Table and Bit Coffee Table.

## DESIGN BY

Simon Legald

## DENMARK



# zuiver<sup>o</sup>

## BLOOM

Outdoor lounge chair

## ZUIVER

Born in 2011 and rooted in Westzaan - a little village northwest of Amsterdam, The Netherlands

Bloom is an outdoor chair for Banne that originates in a search for sustainable materials. In that search, Peter found eco-pixel, and to him, this recycled plastic looked just like stone.

## DESIGN BY

Peter Vander Water

## THE NETHERLANDS





# derlot®

## QTZ

Outdoor lounge chair

### DERLOT

Evolving over more than 15 years, Derlot is now one of Australia's leading design and furniture companies. With internationally-minded since conception, working globally with designers and manufacturers in Italy, USA and Australia. Committing to responsible production, ensuring that localised manufacturing is conscious and sustainable, fostering the regions they operate in and communities they partner with.

### DESIGN BY

Alexander Lotersztain

### AUSTRALIA



## LITTLE RICHARD

Bluetooth Speaker

### RICHARD HUTTEN

He is one of the most internationally successful Dutch designers; a key exponent of "Droog Design", in which he has been involved since its inception in 1993.

In this design is applied an ECOPIXEL typology of material based on a 'multiple layer' concept. with this approach it is possible to create a single material that builds up in different layers which includes a sound-absorbing material property

### DESIGN BY

Richard Hutten

### THE NETHERLANDS



*Weltevree*

## CARRIER

Seat, carry, pull and twist open.

### WELTEVREE

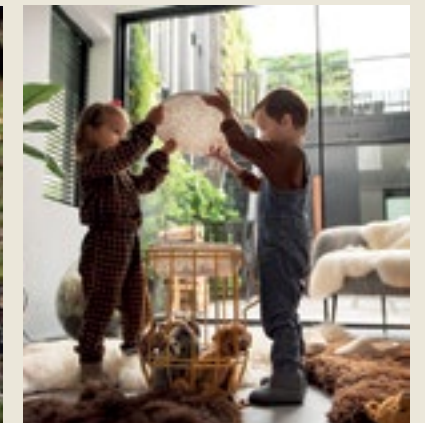
Weltevree is a Dutch design brand founded in 2007

Their products are made with durability in mind and are made of honest materials that last for many years. A transparent production process and experienced partners are a crucial part in order to accomplish this.

### DESIGN BY

Thor ter Kulve

### THE NETHERLANDS



  
AQUANOVA

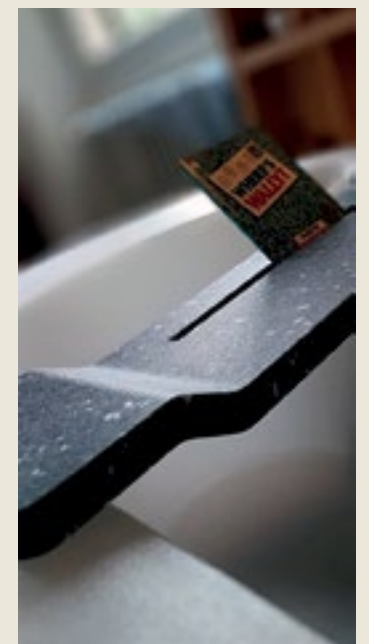
## BATHROOM SET

Laundry bin, accessories and bath-holder

### AQUANOVA

A family business established in 1948, selling a wide variety of household items and practical devices. Today, develops unique products for the bathroom with the focus on high quality and design. Aquanova feels responsible for its future generations, and are working on an ambitious project that focuses on sustainability throughout our entire supply chain.

### BELGIUM







**SUPERPOP**  
Outdoor lounge chair

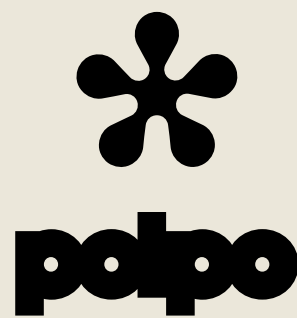
**MINIFORMS**  
Superpop has been declared winner of the Archiproducs Design Awards; 2023 Sustainability Award  
From the ENCANTO ecopixel color palette. Italian company MINIFORMS has chosen, for its new line of stools, the colors: eco-249e #redwood / eco-221e #pistachio / eco-219e #kiwi / eco-013 #stracciatella

**DESIGN BY**  
Paolo Capello  
**ITALIA**



**M A R N I**

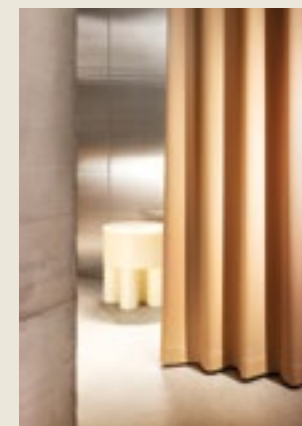
**HOME - WALLPAPER**  
Brave collaborations have made recycling plastic very attractive:  
MARNI / london art wallpaper /miniformsofficial  
From the Encanto ecopixel color palette. Italian company MINIFORMS has chosen, for its new line of stools, the colors: eco-249e redwood / eco-221e pistachio / eco-219e kiwi / eco-013 stracciatella



**POLPO**  
Stool and side table

Stool produced for Milano Design Week 2021, designed by trio made in Italy:  
émilie appercé  
leo bettini oberkalmsteiner  
dominic kim

**DESIGN BY**  
APPERCÉ BETTINI KIM  
**SWISS**



**EMPORIO ARMANI**

**EXHIBITOR**  
A|X'S COMMITMENT TO THE EARTH

**CARING ABOUT RAW MATERIALS**  
Waste is reduced through the partial use of recycled fibres, organic fibres or fibres derived from recovered plastic.

As a result they created MINI BAG made from recycled plastic; in its launch the displays were made from recycled materials including ECOPIX-EL multicolor, color mix created from the colors of the bags.

**ITALIA**





WET® Italiann company founded in 1999 by Jan Puylaert. Is specialized in bathroom design; wants to move culture towards new frontiers through products with SENSE rather than AESTHETICS, and still today, WET® is being (re)marked as one of the trendsetting brands that has changed the bathroom into what it is today.

### HOST

Washbasin

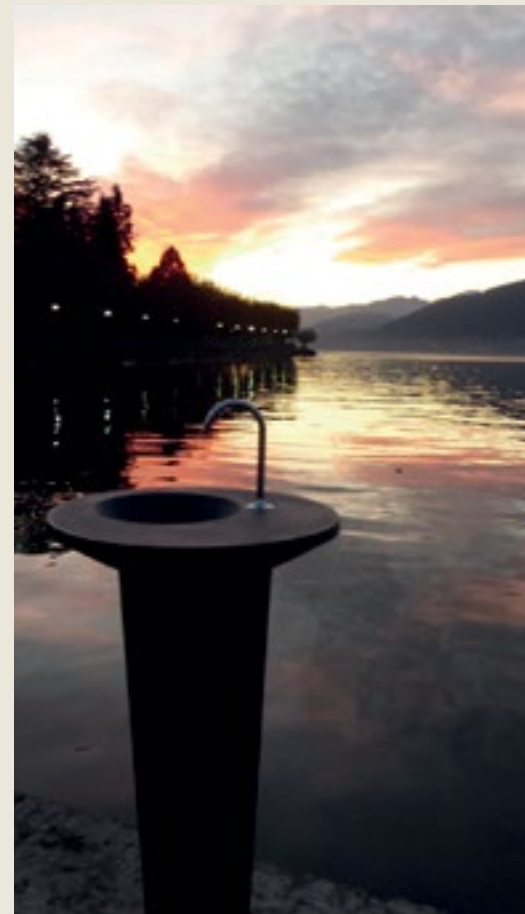
### WET ITALIA

HOST is a flexible and unique bathroom-SYSTEM in which the washbasin “hosts” all water-supplies for both washbasin and showerwall. WET developed with ECOPIXEL an special finiture called “delfts blauw” inspired on the blue and white pottery made in and around Delft in the Netherlands and the tin-glazed pottery made in the Netherlands from the 16th century.

### DESIGN BY

Jan Puylaert and Mariandrea Zambrano

### ITALIA



### MR BIG

Free standing washbasin

### WET ITALIA

Marking an evolution in bathroom sink design, this tall washbasin by WET is changing the way bathrooms look and the way they work. While the usual washbasin measures 86 cm in height, the Mr. Big extra-tall washbasin stands a full 106 cm – that's the height of a standard bar, allowing you to wash your face, hands and brush your teeth while standing upright and in ergonomic harmony.

### DESIGN BY

Jan Puylaert

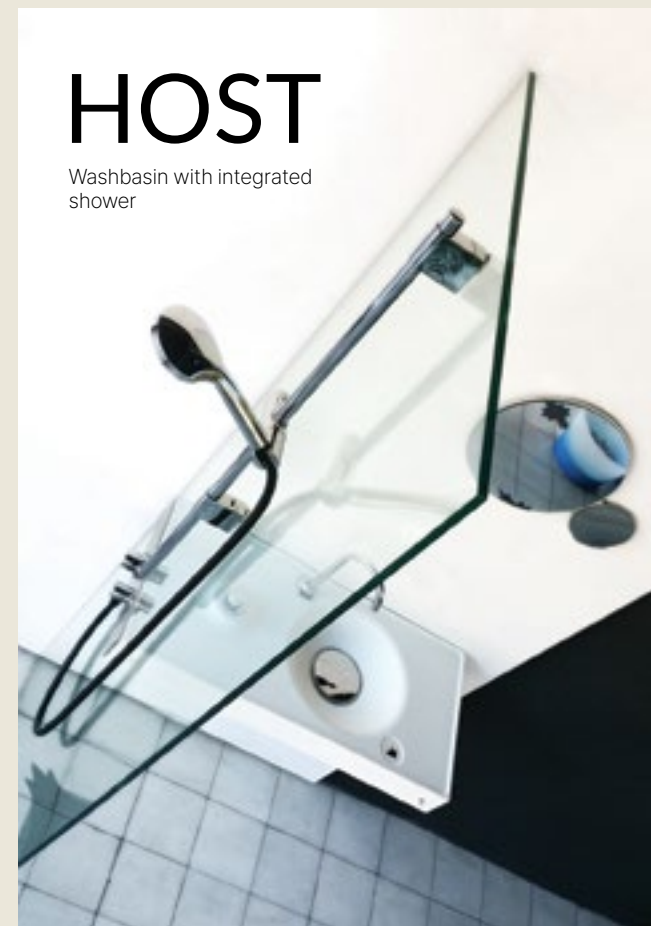
### ITALIA



Ecopixel is suitable for both IN-DOOR and OUTDOOR situations: It resists temperatures from -10 to +50°C. Does not fade and does not fear humidity.

## HOST

Washbasin with integrated shower



### LTT LIGHT TUB /

Free standing bathtub

### WET ITALIA

Back in 2001 designer @jan.puylaert started to work with plastic; he came up with an eye-catching selection of illuminated baths and sinks for the Italian design company WET. The range, Light by Wet, included basins and bathtubs that can be internally lit by lights.

20 years of research and direct work with plastics, make him an expert in molding plastic to transform it into useful and long-lasting objects.

In 2017 Jan overturned his company and decided to stop working with virgin material and give the priority to recycled plastic, creating ECOPIXEL.

### DESIGN BY

Jan Puylaert

### ITALIA



## LTB

Light Basin







SHELVES

Displays for watches and work tables

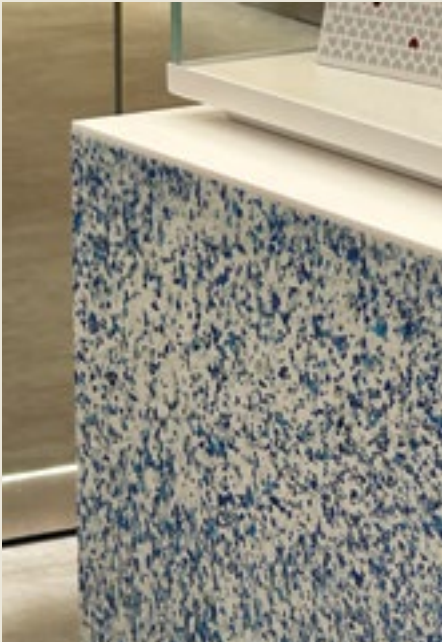
SWATCH

Swatch Group is an international group active in the design, manufacture and sale of finished watches, jewelry, watch movements and components. Began in 1981 when they introduced a simplified, the world's first plastic watch made not by hand in the traditional Swiss manner, but on a fully-automated assembly line. Now the company launch their furniture made in recycled plastics.

DESIGN BY

Swatch

SWISS



ECORAZZO

Fully recycled handbasin

CLOU

Founded i 1992 is known throughout the Netherlands and the world over as a developer and producer of designer products.

CLOU replicates its best-seller model of hand basins in recycled plastic, with its desire to contribute to a green world.

DESIGN BY

Belongs to the Flush series.

THE NETHERLANDS







CUBES

Exhibitors

ADIDAS

ADIDAS is one of the first brands, since our inception in 2017, commissioned ecopixel to produce its display furniture. Here their beautiful and trendy shops in Paris, London and Berlin where Adidas takes a step forward to the circular economy.

DESIGN BY

Adidas

EUROPE



MADE TO BE REMADE  
ADIDAS FOR PARLEY

Adidas Champs Elysées, Paris

Collaboration with adidas and Parley for the Oceans! Ecopixel showcasing the innovative footwear concept, the 3D-printed Ocean Plastic shoe midsole, to demonstrate how the industry can re-think design and contribute to stop ocean plastic pollution.

DESIGN BY

Adidas

FRANCE

ADIDAS LONDON

Concept store

The Adidas store on Carnaby Street! "Home of London's Originals" based in the Heart of Soho!

It's manager Charlie Cook described as "The most sustainable project, forward thinking, diverse, and just utterly beautiful store."

We are honored that @adidas have chosen #ecopixel sustainable material, to be part of this project.

UNITED KINGDOM



ADIDAS BERLIN

Installation

Explanatory Installation that inform consumers about plastic waste which is intercepted from the ocean  
▪ cleaned and manually sorted  
▪ reworked into pellets  
▪ melted and spun into a polyester yarn: Parley Ocean Plastic  
▪ used to become adidas x Parley products

DESIGN BY

Adidas

GERMANY







## 7EME CIEL

UnisVers Le Beau Responsable

## PRINTEMPS

ECOPIXEL x PRINTEMPS "7ème Ciel" permanent installation at the New Dome Boulevard Haussmann, Paris.

## CUBE EXHIBITOR

Printemps

PARIS - FRANCE



## SPECIAL GUEST CHAISE LONGUE "ALEX"

Exhibition

## GALERIE BERTRAND GRIMOND

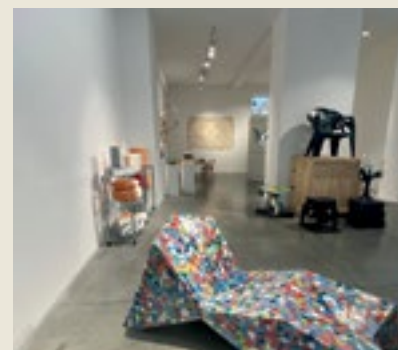
An exhibition at the crossroads of design and art, bringing together distinguished designers and emerging artists for their innovative, sensitive approach and their actions concrete around circularity and upcycling.

46

## DESIGN BY

Alessandro Mendini & Atelier Mendini

## FRANCE



## PRINTEMPS

unis ... vers  
le beau responsable

## UNIS ... VERS

ECOPIXEL one of the brands invited to the Printemps unisvers responsible.

## CITADIUM/PARIS

UNIS ... VERS TOWARDS THE RESPONSIBLE BEAUTIFUL, bringing together a community of brands committed to giving meaning to your purchases and making it possible to identify products that enhance people, ethics, nature, circular and sustainable economy.



## made in design by PRINTEMPS

## PRINTEMPS HAUSMANN

Trendsforum that Nelly Rodi made for @maisonetobjet 2018, in collaboration with Sopha Industries France.

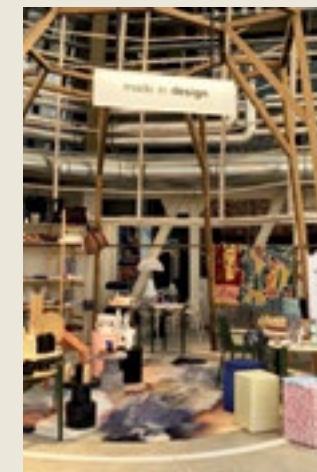
## INVITED PRODUCTS

DELTA by Jan Puylaert

BIT stool for NORMANN COPENHAGEN

BOX / ECOPIXEL for KIOSK48TH

## FRANCE



47



**CUBE**  
**CITADIUM/  
PARIS**

Another department store that works with ecopixel; @citadium determined to participate in a circular economy for plastics. Shop with 6000 sqm and over four floors. You can find #ecopixel organizers and shelves that showcase its specialization on urban, skate, rock and street wear.

**DESIGN BY**  
Citadium  
**FRANCE**



**VIRTUOUS**  
The Trend Mook  
**MAISON & OBJET**

Trendsforum that Nelly Rodi made for @maison-objet 2018, in collaboration with Sopha Industries France.

**DESIGN BY**  
Nelly Rodi  
**FRANCE**



**RECREEZ REINVENTEZ**

Shop-window

**PRINTEMPS**

ECOPIXEL invited to RECYCLE ET DURABLE EN EXCLUSIVE POUR LE PRINTEMPS Department Store in Paris.

**DELTA**

Jan Puylaert

**PARIS - FRANCE**



**LE MARKET**

Organizer

**PRINTEMPS/PARIS**

LE MARKET - PRINTEMPS  
MODE FEMME

• Le nouveau concept du Printemps Haussmann •

Very satisfied with this second collaboration with

@printempsofficial

**DESIGN BY**

Printemps

**FRANCE**





# JULES

## MODULES AND DISPLAYS

Interior accessories

### JULES

For their campaign “Objective 0 waste” Jules comisions ECOPIXEL to produce modues for their fitting room and dis-plays for their accessories, all in recycled plastic to their new boutiques. They're concept is build on 3 main values:  
« Easy » for our clients/teams « Vibrant » shop and shopping experience « Sustainable » from material clothes and interior building materials

### DESIGN BY

Jules

FRANCE, BELGIUM



# TOMMY HILFIGER

## SHOP-WINDOW

Concept design

### TOMMY HILFIGER

SP18 | Berlin Fashion Week

Pillars, floor and walls for the windowsdisplays.

### DESIGN BY

Claudio Fiore Massenz

GERMANY



# Ro

Rossana Orlandi

## ECOPIXEL SPECIAL GUEST

Chaise Longue ALEX by Mendini.  
Delta stool & side tables and unique pieces of a illumination.

## ROSSANA ORLANDI GALLERY

The Gallery opens its gardens to host an exhi-bition about consciousness of recycling plastic waste. Named Senso di Colpa that year later turned into the manifesto Guiltlessplastics

### DESIGN BY

Alessandro Mendini and Jan Puylaert

ITALIA



## ALEX CHAISE LONGUE

ALEX prototype, only piece

### RO PLASTIC-MASTER'S PIECES

Ro Plastic-Master's Pieces Exhibition at the Railway Pavillion, Museo Scienza e Tecnologia “Leonardo da Vinci” in Milan

### DESIGN BY

Alessandro Mendini

ITALIA



# RECYCLED AWARENESS

PLASTICS waste = RAW material

During the awareness process on how to reuse plastic waste at our hometown school for years we have our kids collect bottle taps. They never knew what has always happened with these taps, and so we thought it could be educating addressing the "taps" to a project that could actually come back to the school, to show the kids what can really be done with waste, rather than collecting without ever knowing what happens with it.

DESIGN BY

Kindergarten Students

PORTO VALTRAVAGLIA, ITALY



Since the school needed new washbasins ECOPIXEL was asked if the taps could become washbasins? After a few prototypes (and drawings we made with the kids) ECOPIXEL managed to create new washbasins made from the plastic waste the kids collected themselves. As a result the kid-students now collect taps and other plastic waste with much more pleasure and purpose than ever before.



ECOPIXEL COLLABORATION

-O-XYGEN targets today's youth who want to express their personal attitude through modern wearing apparel, communicating recycled plastics as a lifestyle.

MAKE RECOGNIZABLE PRODUCTS TROUGH DESIGN AND PRINTS

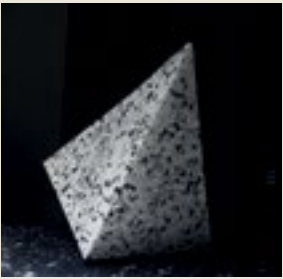
"O" decide to design with materials that are made to be made again from materials that are safe and renewable, are worn more, and can be easily recovered, rented and resold at the end of their use, never ending up as waste.

ECOPIXEL engaged in the production of accessories "O". Three-dimensional objects truly intended to be preserved indefinitely.

DESIGN BY

Adriana Morandi & Mariandrea Zambrano

ITALIA







# colors standard

**Made from ready  
colored waste streams**



**ECO \*\*\***  
80 -100% / 100% recycable



**TRANSLUSCENT**




**WATER PROOF \*** under request  
any color can be water-proof





eco-000 ALABASTER

ECO\*\*\* 




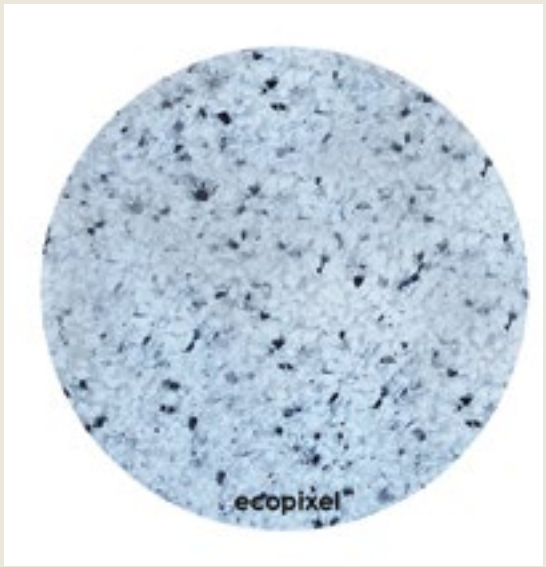
eco-001 PURE WHITE

ECO\*\*\*



eco-010

ECO\*\*\* 



eco-012

ECO\*\*\*



eco-066 TERRA LIGHT

ECO\*\*\*



eco -100 GREY

ECO\*\*\*



eco-013

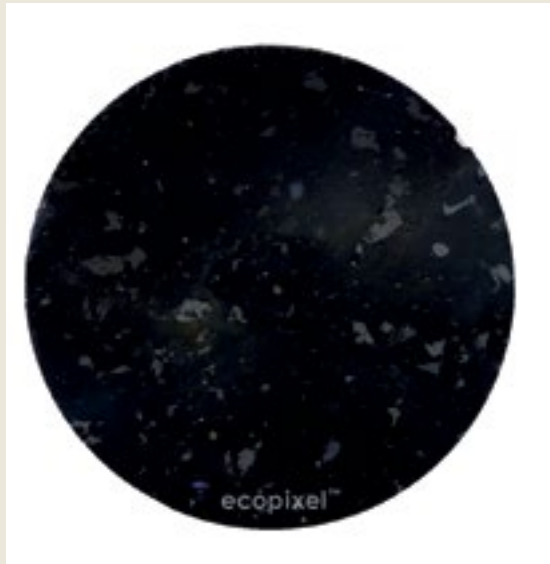
ECO\*\*\*



eco-000k BLACK REGENERATED

ECO\*\*\*





eco-051 BATMAN  
BLACK IS THE NEW BLACK

---

ECO\*\*\*



eeco-052 Blue de Gascogne  
BLACK IS THE NEW BLACK

---

ECO\*\*\*



eco-040


---

ECO\*\*\* 



eco-092

---

ECO\*\*\* 



eeco-017 RO  
BLACK IS THE NEW BLACK

---

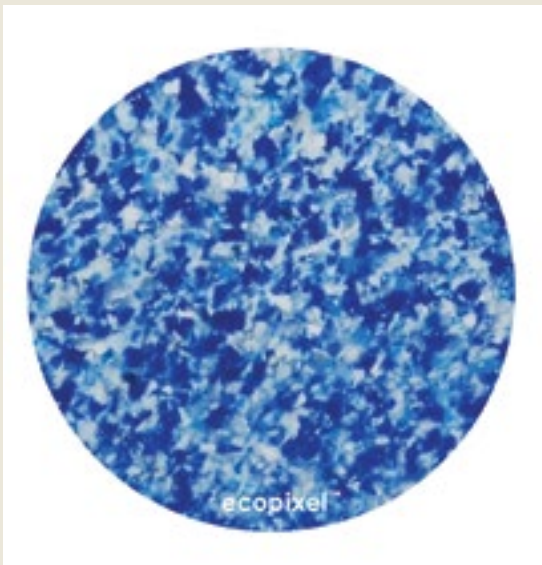
ECO\*\*\*



eeco-031 GALAXY  
BLACK IS THE NEW BLACK

---

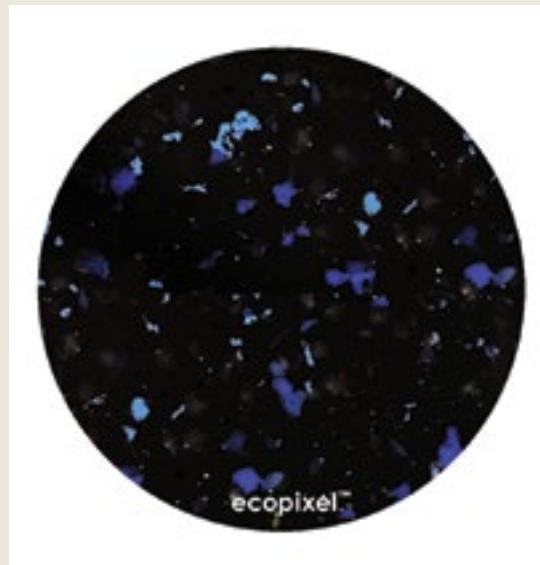
ECO\*\*\*



eco-018

---

ECO\*\*\*

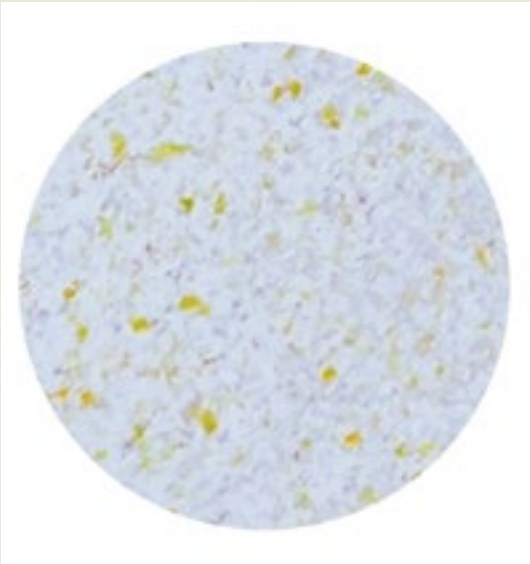


eeco-082

---

ECO\*\*\*





eco-037

ECO\*\*\*



eco-094

ECO\*\*\*



eco-015

ECO\*\*\*



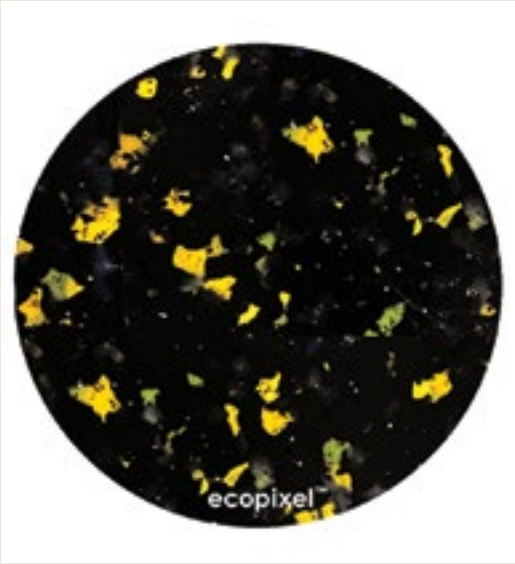
eco-093

ECO\*\*\*



eeco-021

ECO\*\*\*



eeco-084

ECO\*\*\*



eco-009

ECO\*\*\*



eeco-083

ECO\*\*\*





eco-038

ECO\*\*\*



eco-095

ECO\*\*\*



eco-016 W

TAPS W

ECO\*\*\*



eco-016 N

TAPS N

ECO\*\*\*



eeco-028

ECO\*\*\*



eeco-085

ECO\*\*\*



eco-069

TRASH

ECO\*\*\*



eeco-016K

TAPS BLACK

ECO\*\*\*



# colors

## ecopixel ENCANTO

PIGMENTED by **ecopixel®**

**ECO \*\*\***

98% recycled/ 100% recycable



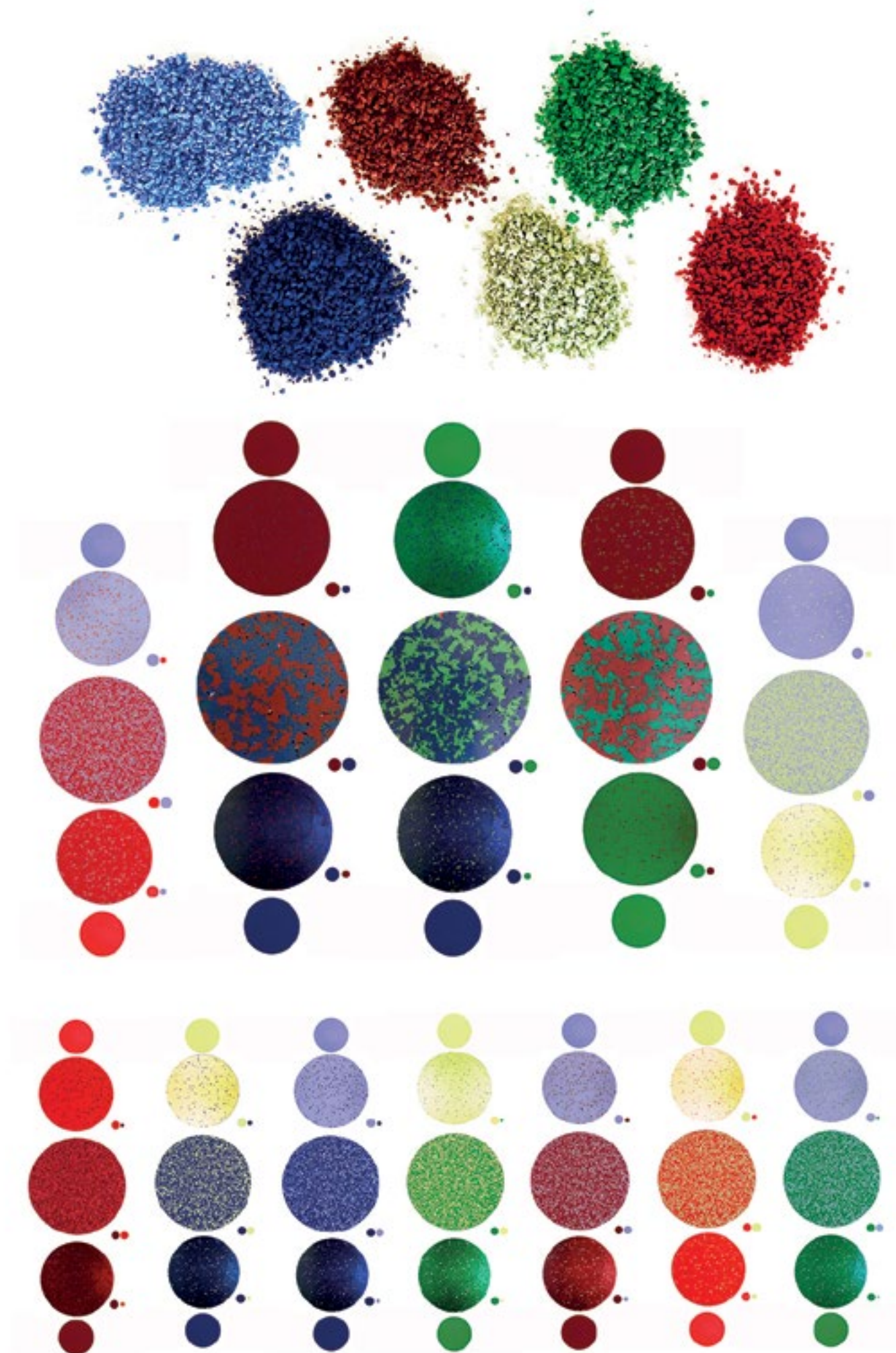
TRANSLUSCENT



WATER PROOF \* under request  
any color can be water-proof




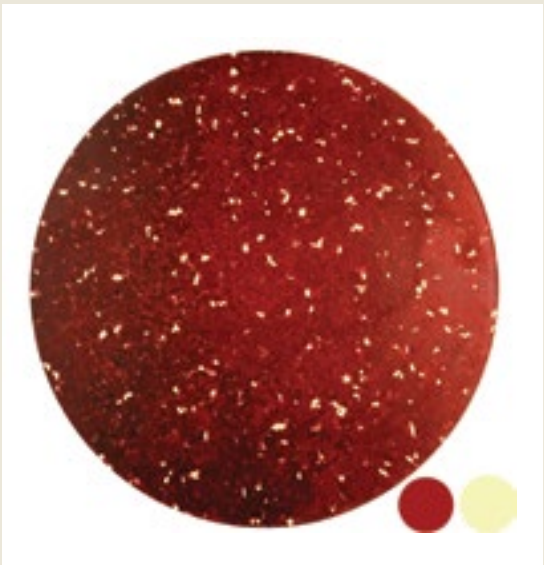
encanto color series by Mariandrea Zambrano




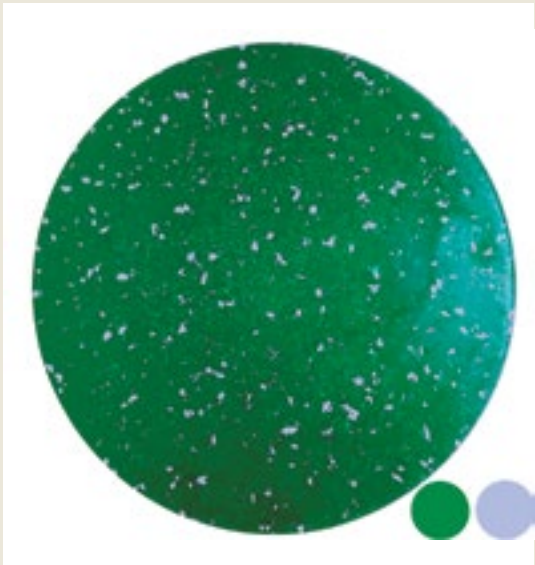




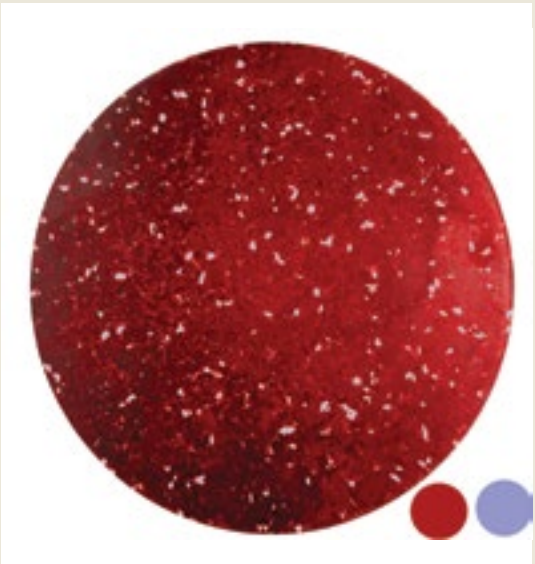
eco-206e WINE  
ECO\*\*\* 



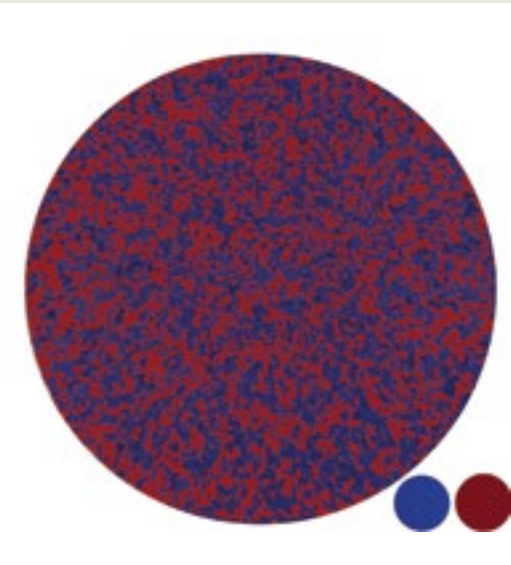
eco-250e BRANDY  
ECO\*\*\* 




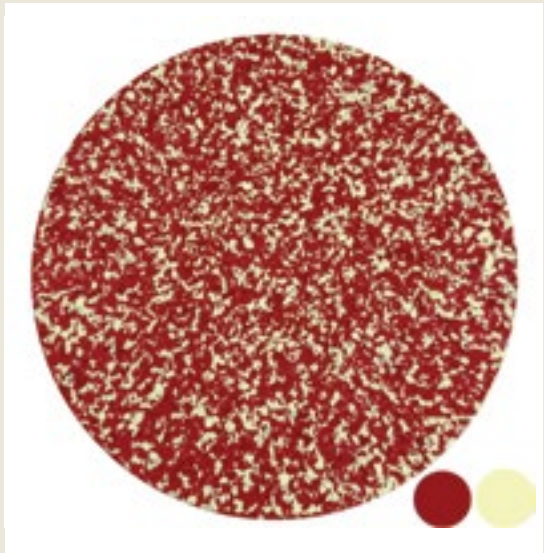
eco-217e SILVER TEAL  
ECO\*\*\* 




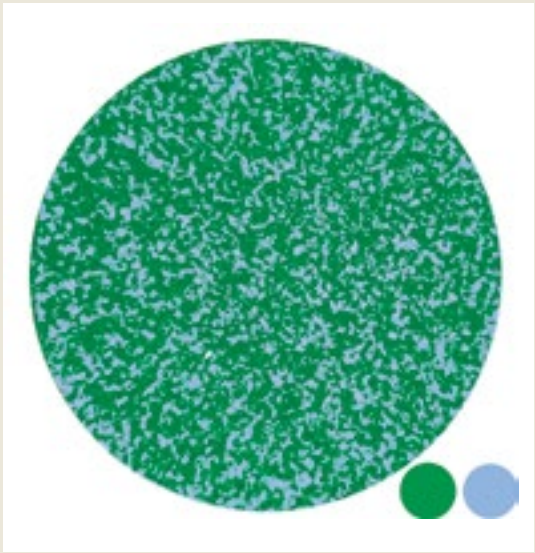
eco-247e TWILIGHT LAVANDER  
ECO\*\*\* 




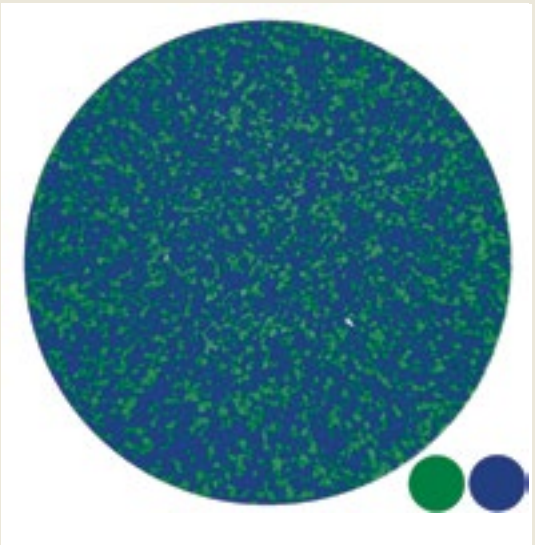
eco-243e TYRIAN PURPLE  
ECO\*\*\* 




eco- 249e REDWOOD  
ECO\*\*\* 

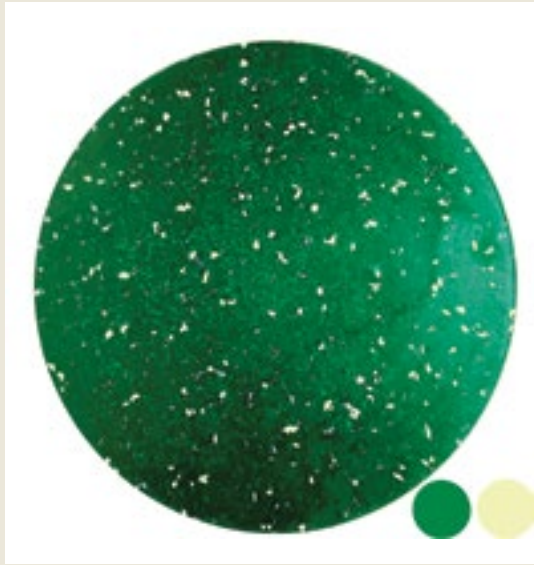


eco-216e EMERALD  
ECO\*\*\* 

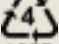


eco-207e EAGLE GREEN  
ECO\*\*\* 





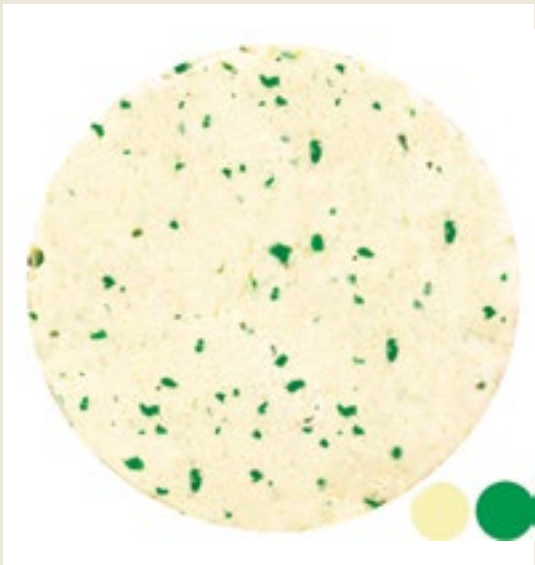
eco-220e      MAY GREEN

ECO\*\*\*        
LDPE

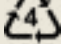


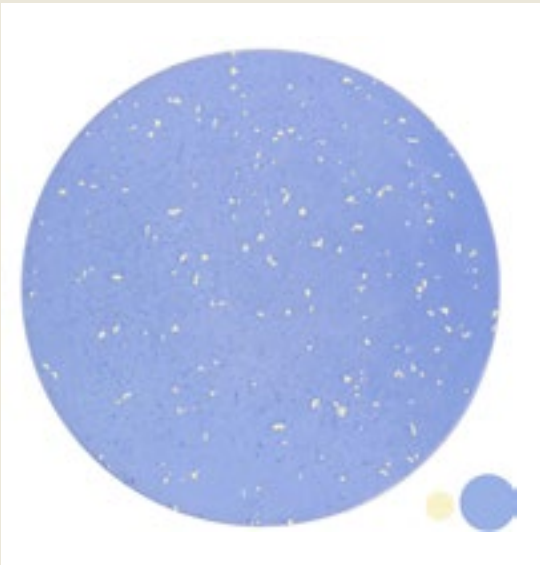
eco-214e      MIDNIGHT NAVY

ECO\*\*\*        
LDPE

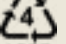


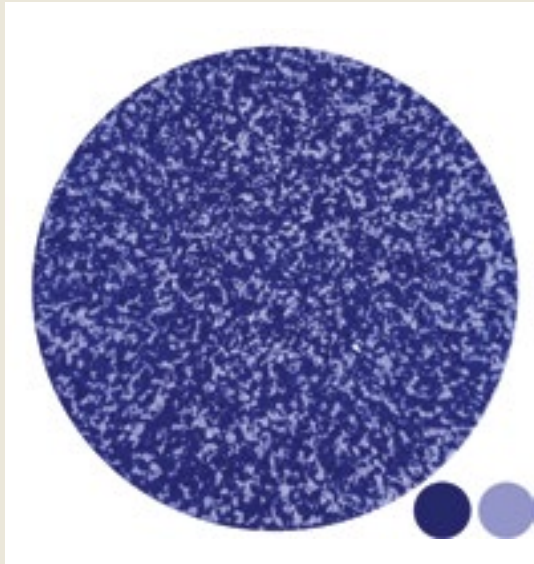
eco-221e      PISTACHIO

ECO\*\*\*        
LDPE

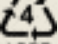


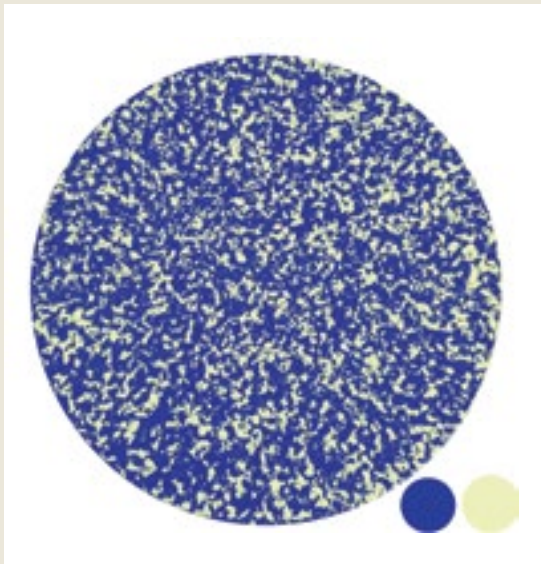
eco-230e      BLUE YONDER

ECO\*\*\*        
LDPE

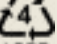


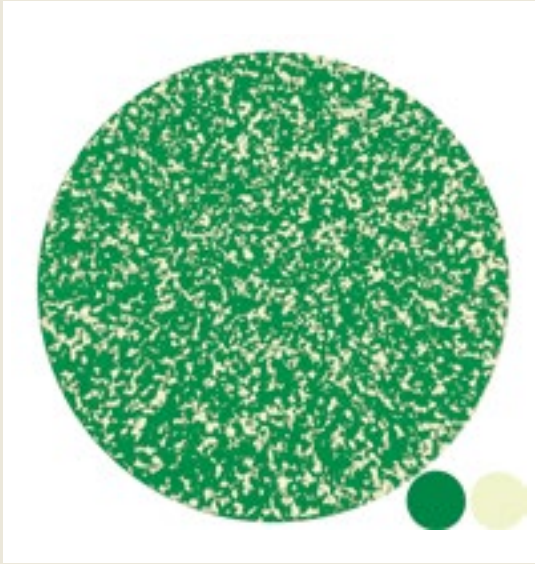
eco-210e      LIBERTY

ECO\*\*\*        
LDPE



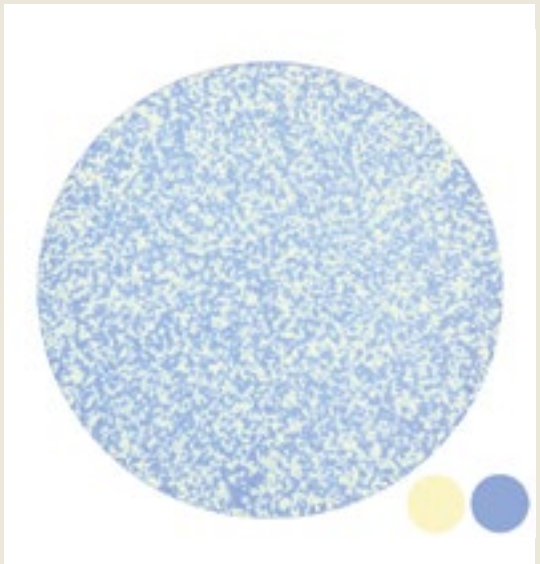
eco-213e      SLATE BLUE

ECO\*\*\*        
LDPE

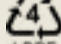


eco-219e      KIWI

ECO\*\*\*        
LDPE



eco-228e      SILVER SAND

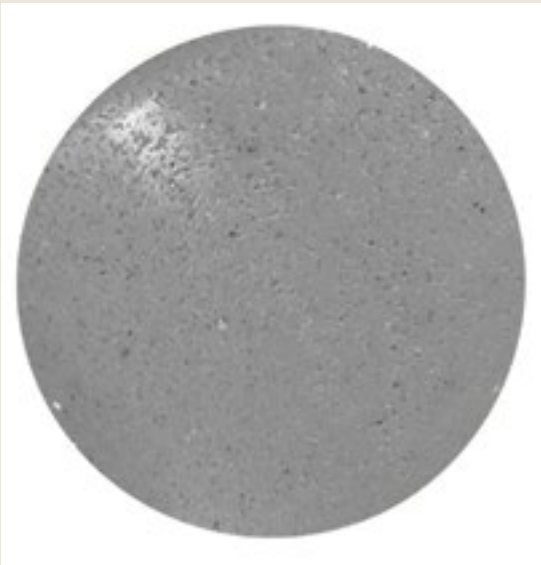
ECO\*\*\*        
LDPE




# OPEN SKIN


This “open-pixel” is an effect of structure in the material that gives lightness and softness to the object

This three-dimensional texture makes colors look more vivid, intense and saturated.  
Nevertheless this surface texture allows the light to pass through, creating a play of casual light in the environments.




open-Grey      GREY  
ECO\*\*\*      



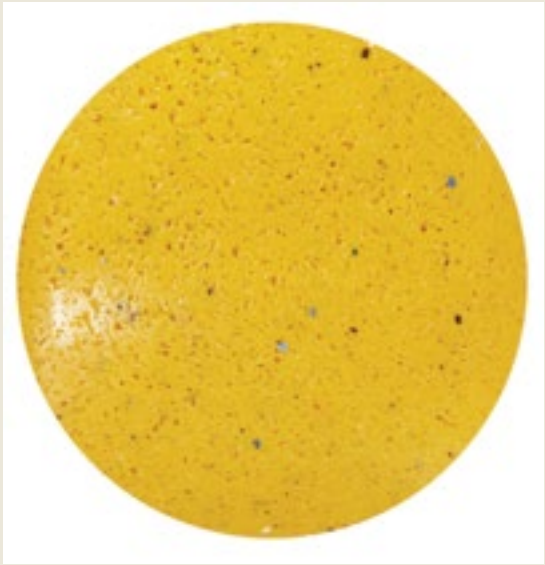
open-Blue      BLUE  
ECO\*\*\*      




open-000K      BLACK  
ECO\*\*\*      




open-001      WHITE  
ECO\*\*\*      



open-Yellow      YELLOW  
ECO\*\*\*      



open-Red      RED  
ECO\*\*\*      



# colors

## ecopixel GUAJIRA

PIGMENTED by **ecopixel®**







eco-301g ISASHII - Mi Tierra

ECO\*\*\*



eco-302g YUUI - TABACO

ECO\*\*\*



eco-304g MAPA - MIEL

ECO\*\*\*



eco-309g KASHI - LUNA

ECO\*\*\*



eco-303g

OORO

ECO\*\*\*



eco-306g MAIKKI - MAIZ

ECO\*\*\*



eco-305g

ICHII - SAL

ECO\*\*\*



eco-310g

JASAI-ARENA

ECO\*\*\*







eco-314g PALAA - MAR

ECO\*\*\*



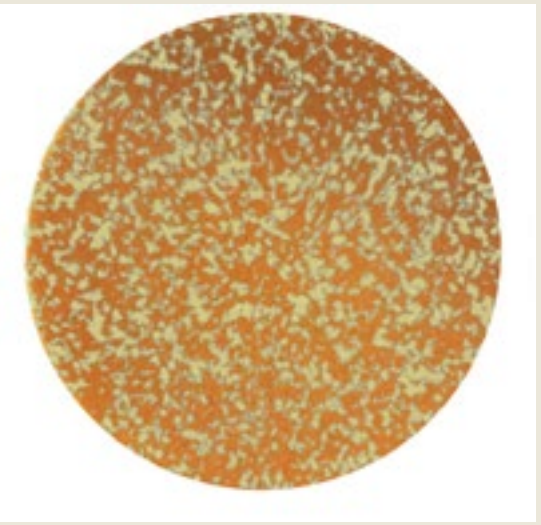
eco-312g LEECHI - LECHE

ECO\*\*\*



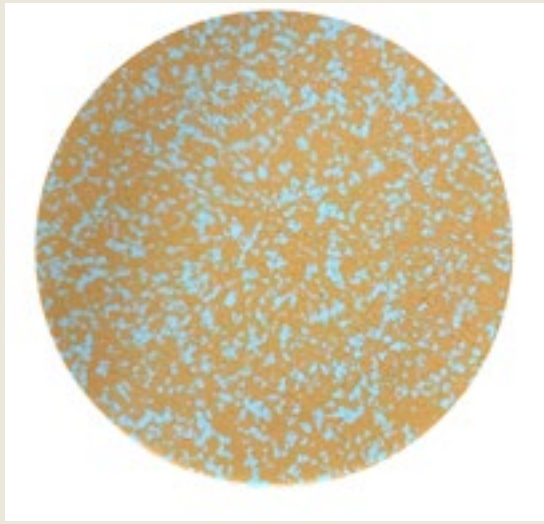
eco-318g SIKI - FUEGO

ECO\*\*\*



eco-320g TASIMA - MI LENA

ECO\*\*\*



eco-309g KAI - SOL

ECO\*\*\*



eco-316g ISSASHII - DESIERTO

ECO\*\*\*



eco-324g ISHOO - ROJO

ECO\*\*\*



eco-317g MALOUKATA - AMARILLO

ECO\*\*\*

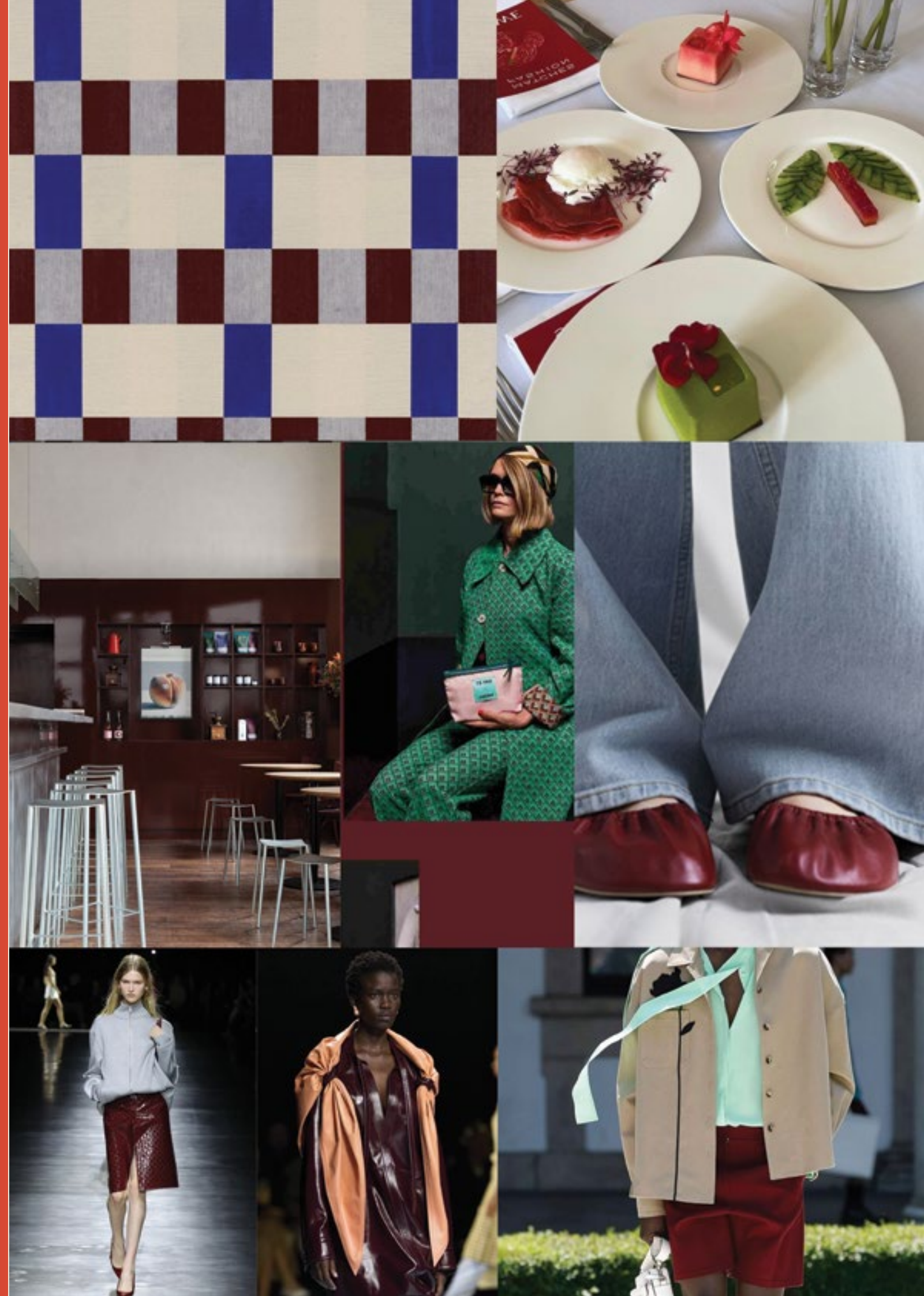




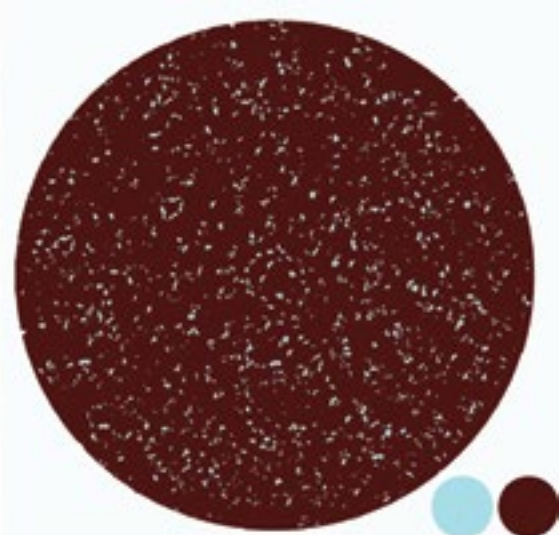
# colors

## ecopixel MAROON

PIGMENTED by ecopixel®

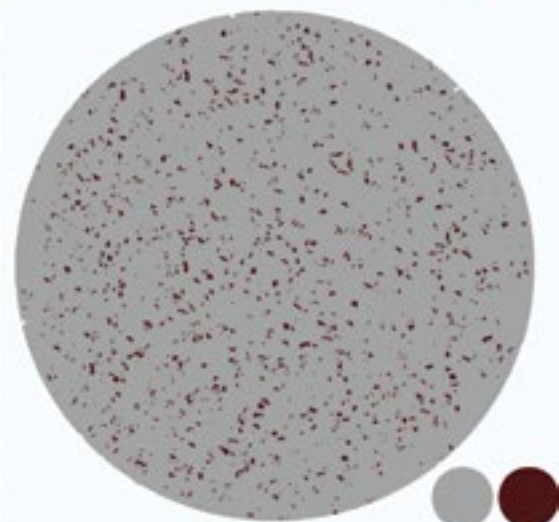






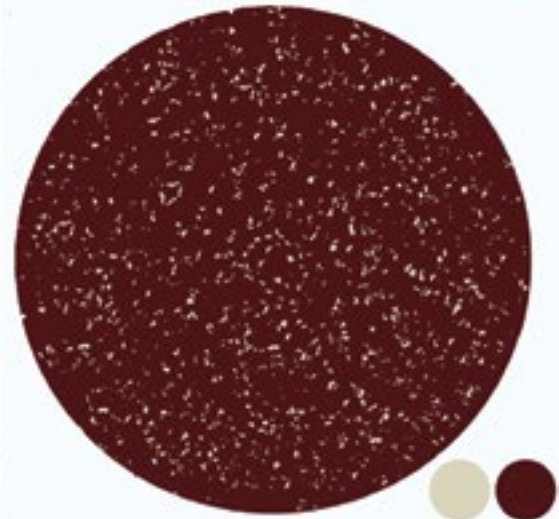
eco-352M MAROON-ACQUA

ECO\*\*\*



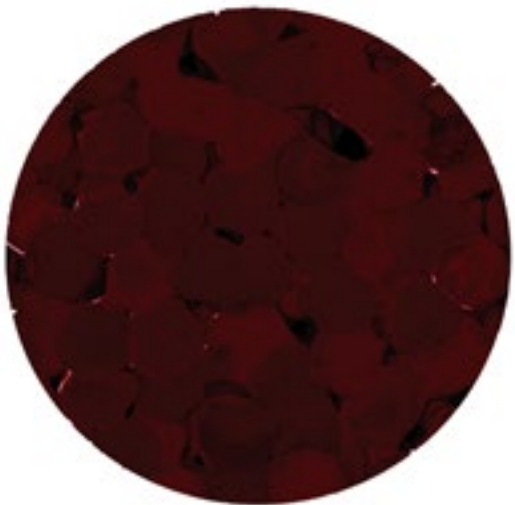
eco-353M MAROON -GREY

ECO\*\*\*



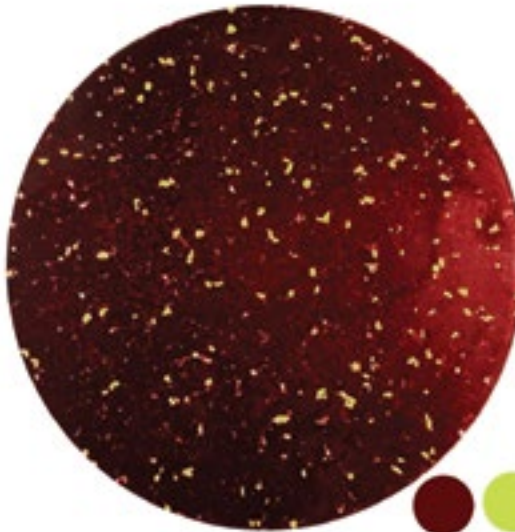
eco-354M MAROON -SAND

ECO\*\*\*



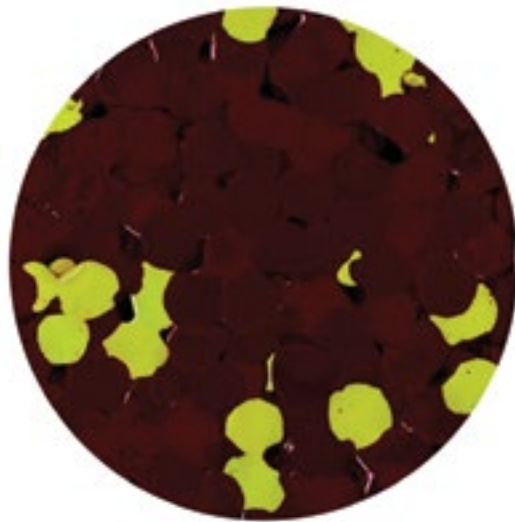
eco-350M MAROON

ECO\*\*\*



eco-351M MAROON - GREEN

ECO\*\*\*



eco-351M POINT MAROON  
-GREEN

ECO\*\*\*





ecopixel SPECIALS



eco-010    TRASLUCENT WHITE  
ECO\*\*\*



eco-017    ROSSANA ORLANDI  
ECO\*\*\*



eco-051    BLUE DE GASCOGNE  
ECO\*\*\*



Malpensa Terminal 1, Milan | Image by Felix Burrichter



eco-017    SOTTASS-MXP  
ECO\*\*\*





# textures

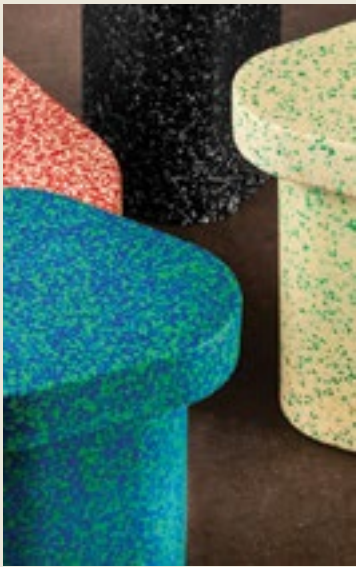
## Typologies



ecopixel STANDARD



ecopixel MINI



ecopixel PIGMENTED



ecopixel OPEN PIXEL

### ecopixel STANDARD

6 millimeter irregular pixel.

#### Composition

PELD4/PERT/PEHD/PP

#### Source

Post Industrial / Packing-Au-  
tomotive-Construction & Post  
Consumer

#### Recycled content

80 to 100%

### ecopixel MINI

2 millimeter irregular pixel

#### Composition

PELD4/PERT/PEHD/PP

#### Source

Post Industrial / Packing-Au-  
tomotive-Construction & Post  
Consumer

#### Recycled content

80 to 100%

### ecopixel PIGMENTED

6 millimeter irregular pixel.  
2 millimeter irregular pixel  
Uniform: no pixel.

#### Composition

PELD4

#### Source

Post Industrial

#### Recycled content

80 to 100%

### ecopixel OPEN PIXEL

Open pixel structured

#### Composition

PERT

#### Source

Post Industrial / Construction

#### Recycled content

100%





ecopixel ALABASTER



ecopixel RINGS



ecopixel CANDLE RED



ecopixe PAPER



ecopixel ROUGH



ecopixe PROUST



ecopixel MAXIPIXEL



ecopixel TAPS WILD

ecopixel ALABASTER

Neutral “Alabaster” uniform colored / eco-000

Composition

PELD4

Source

Post Industrial / Packing

Recycled content 100%

86

ecopixel RINGS

OPEN RING structured

Composition

PERT

Source

Post Industrial / Construction

Recycled content 100%

ecopixel ROUGH

NON uniformly melted superficial texture. Special effect ©2024 ecopixel

Composition

PELD4

Source

Post Industrial / Packing-Auto-motive

Recycled content 100%

ecopixe PROUST

Alessandro Mendini

Open pixel D18mm - 98% recycled plastics (plus 2% pigment) Special effect © 2024 ecopixel

Composition

PELD4

Source

Post Industrial / Packing

Recycled content 100%

ecopixel CANDLE RED

Deep red flamed

Composition

PP

Source

Post Industrial / Candle-holders

Recycled content 100%

87

ecopixe PAPER

mix of recycled newspaper and recycled plastic

Composition

PEHD & PELD

Source

Post Industrial Soap Bottle Industry

Recycled content 80%

ecopixel MAXIPIXEL

Widely open, 40mm pixel, irregular

Composition

PELD

Source

Post Industrial / Packing

Recycled content 100%

ecopixel TAPS WILD

Visible bottletaps

Composition

PELD4 / PP / PEHD

Source

Post Industrial Packing & Post Consumer

Recycled content 60%





*circular material*

**ecopixel.eu**

2025

**WET/ecopixel®**

100% made in Italy production © 2025

SHOWROOM

Piazza Imbarcadero, Porto Valtravaglia  
(VA) Lago Maggiore Italy

WORKPLACE

Via delle Rose 1,  
14010 Dusino San Michele (AT)

HEADQUARTERS

Via Altipiano 11, Porto Valtravaglia (VA)  
info@ecopixel.eu | T. +39 3452107207