



ecopixel materials

ECOPIXEL MATERIALS © 2025

[www.ecopixel.eu](http://www.ecopixel.eu) | [info@ecopixel.eu](mailto:info@ecopixel.eu) | T. +39 345-2107207

# content

INTRODUCTION	05	TEXTURES & TYPOLOGIES	60
ecopixel materials, recycled mix for rotomolding			
COLORS		ecopixel offers different surface qualities that give the material different structural and perception properties.	
Standard Colors	06		
Made from ready colored waste steams			
Neutrals			
Black is the New Black		ecopixel STANDARD	62
MULTICOLOR		ecopixel MINIPIXEL	64
ecopixel TERRACOTTA	18	ecopixel PROUST	66
Pigmented by ecopixel		ecopixel AUDIO	68
ecopixel ENCANTO	20	ecopixel TRANSLUCID	70
Pigmented by ecopixel		ecopixel WATERPROOF	72
ecopixel GUAJIRA	32	ecopixel ALABASTER	74
Earth and desert colors, warm and muted tones. Pigmented by ecopixel		ecopixel RINGS	76
ecopixel MAROON	42	ecopixel MAXIPIXEL	78
A deep red shade with a subtle hint of purple. Group of tones that exude a sense of luxury and sophistication while maintaining a warm and inviting vibe. Pigmented by ecopixel		ecopixel OPENSkin	80
ecopixel SPECIALS	48		
ecopixel FREUD	50		

# ecopixel materials RECYCLED MIX for ROTOMOLDING

**ECOPIXEL is an italian manufacturing company that recycles thermoplastic waste-material in order to obtain a recycled (1) and recyclable (2) material creating this way a true \*cycle in material-use.**

ECOPIXEL melts different recycled plastics together into wonderful and amazing colored patterns throughout its entire material thickness. ECOPIXEL melts into strong and structural materials, giving birth to an entirely new future in plastic recycling. Developing this new production possibility, ECOPIXEL has opened a new market where recycled aspects meet refreshing new color aspects, releasing incredible possibilities for designers that can now work with pigmented waste into any color of choice.

Since 2006, with firsthand ROTOMOLDING experience, ECOPIXEL is a pioneer in recycling plastics. Although ROTOMOLDING shredded flakes instead of standard

micronized powder seems incredibly simple it occurs difficult and complex at the same time. ECOPIXEL will guide you to the magic balance between the exact mixture\* of materials and the precise mold temperatures needed to achieve almost any product of choice. ECOPIXEL supplies mixtures for the most diverse product fields (outdoor, indoor, waterproof, mini, open, translucent etc. etc.) in hundreds of color combinations. With ECOPIXEL you enter a world of possibilities, too vast to mention. Our designers work non-stop on new trending color pigments and combinations as well as texture effects. ECOPIXEL often works on customized solutions to best meet your needs.

Although from the very first moment obtaining these highly innovative “visual” results, it has more often been our technical interest that pushed us ahead. From the beginning, it was clear that the secret is the exact material choice or a specific material mix. Using LDPE or LLDPE, but sometimes also HDPE, MDPE, or even RTPE, it is clear that not all typologies mix the same way. Different materials, even different

shredding methods, lead to completely different pixel effects and guide us to very precise percentages to obtain these precise color effects. Studying ECOPIXEL made us realize that textures do not just develop through color percentage but are obtained thanks to specific material mixtures and sometimes even production cycles. As we strictly use either PE, a circular (recyclable) material is obtained.

**ECOPIXEL divides its mixtures into different groups as they were developed with different cultural background inputs. ECOPIXEL never underestimates the importance of color and constantly updates its catalogue/databank. Our colors are carefully studied and based on ongoing color trends as well as a follow-up from waste availabilities. ECOPIXEL develops customized colors on demand, creating customized pigments on request – please ask our specific sales team for info.**

# circularity

# colors

ecopixel STANDARD

# STANDARD COLORS

## Made from ready colored waste streams

This group shows a range of 32 obvious colors and black and whites that we call “STANDARD” because its components are ready-colored waste materials as we find them. No pigments are added, and thus minimal added energy was needed to create these mixtures.

\*\*\* Please notice that these group of STANDARD colors may vary from batch to batch as the tonalities will come each time from different sources.



eco-001      PURE WHITE

ECO\*\*\*



eco-000      ALABASTER

ECO\*\*\*



eco-000k      BLACK REGENERATED

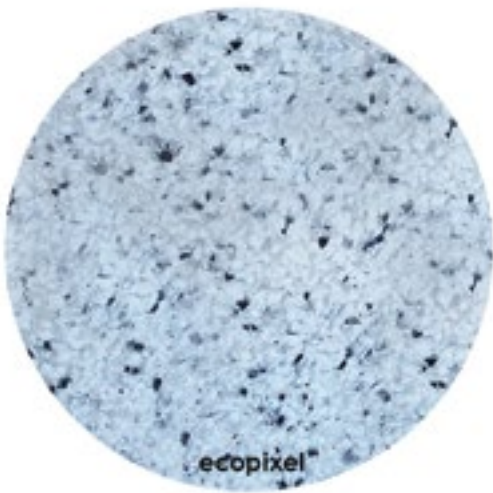
ECO\*\*\*





eco-010

ECO\*\*\*



eco-012

ECO\*\*\*



eco-051      BATMAN  
BLACK IS THE NEW BLACK

ECO\*\*\*



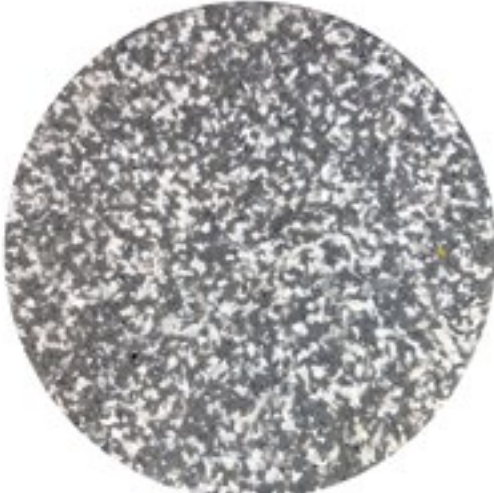
eeco-052      Blue de Gascogne  
BLACK IS THE NEW BLACK

ECO\*\*\*



eco-013

ECO\*\*\*



eco-050      GREY

ECO\*\*\*



eco-017      RO  
BLACK IS THE NEW BLACK

ECO\*\*\*



eco-031      GALAXY  
BLACK IS THE NEW BLACK

ECO\*\*\*





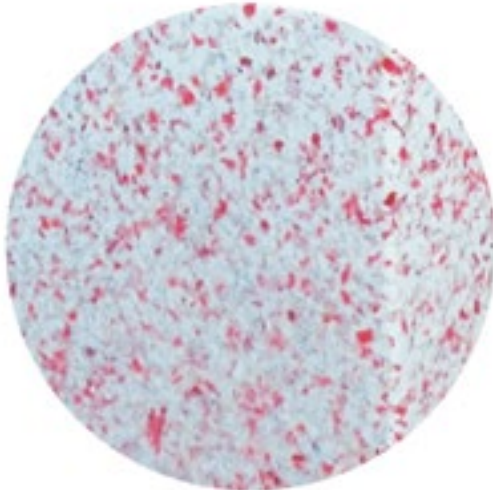
eco-062

ECO\*\*\* 



eco-092

ECO\*\*\* 



eco-063

ECO\*\*\*



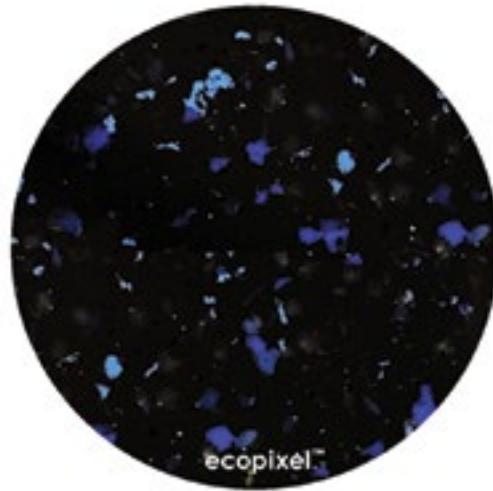
eco-093

ECO\*\*\* 



eco-072

ECO\*\*\*



eeco-082

ECO\*\*\*



eco-073

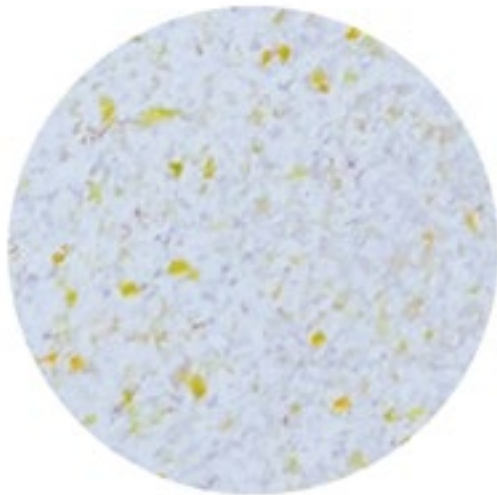
ECO\*\*\*



eeco-083

ECO\*\*\*





eco-064

ECO\*\*\*



eco-094

ECO\*\*\*



eco-065

ECO\*\*\*



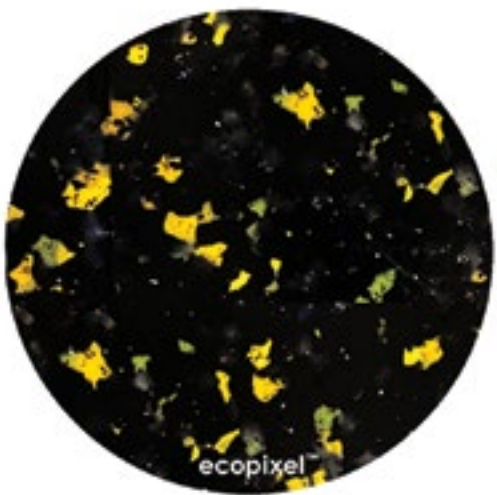
eco-095

ECO\*\*\*



eeco-074

ECO\*\*\*



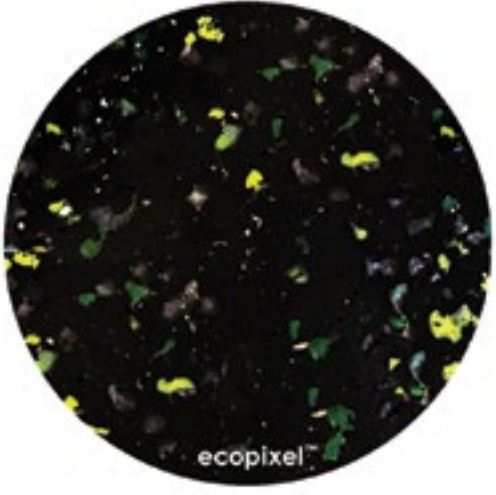
eeco-084

ECO\*\*\*



eco-075

ECO\*\*\*



eco-085

ECO\*\*\*





eco-066

ECO\*\*\*



eco-096

ECO\*\*\*



eco-016 W

TAPS W

ECO\*\*\*



eco-016 N

TAPS N

ECO\*\*\*



eco-076

ECO\*\*\*



eco-086

ECO\*\*\*



eco-069

TRASH

ECO\*\*\*



eco-016K

TAPS BLACK

ECO\*\*\*

# colors

## ecopixel TERRACOTTA

PIGMENTED by ecopixel®

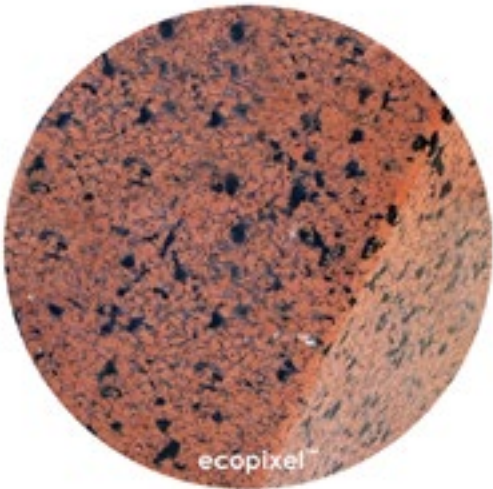
eco-100  
TERRA LIGHT

ECO\*\*\*



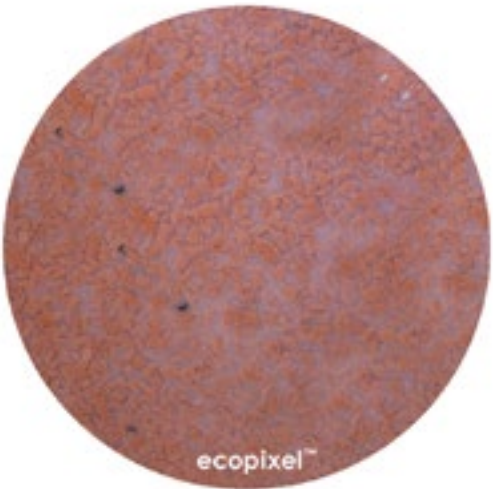
eco-104  
TERRA BLACK

ECO\*\*\*



eco-101  
TERRA NT

ECO\*\*\*



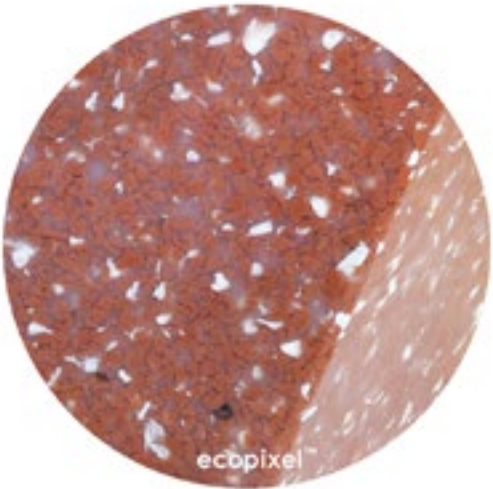
eco-102  
BLACK TERRA

ECO\*\*\*



eco-103  
TERRA WHITE

ECO\*\*\*





colors

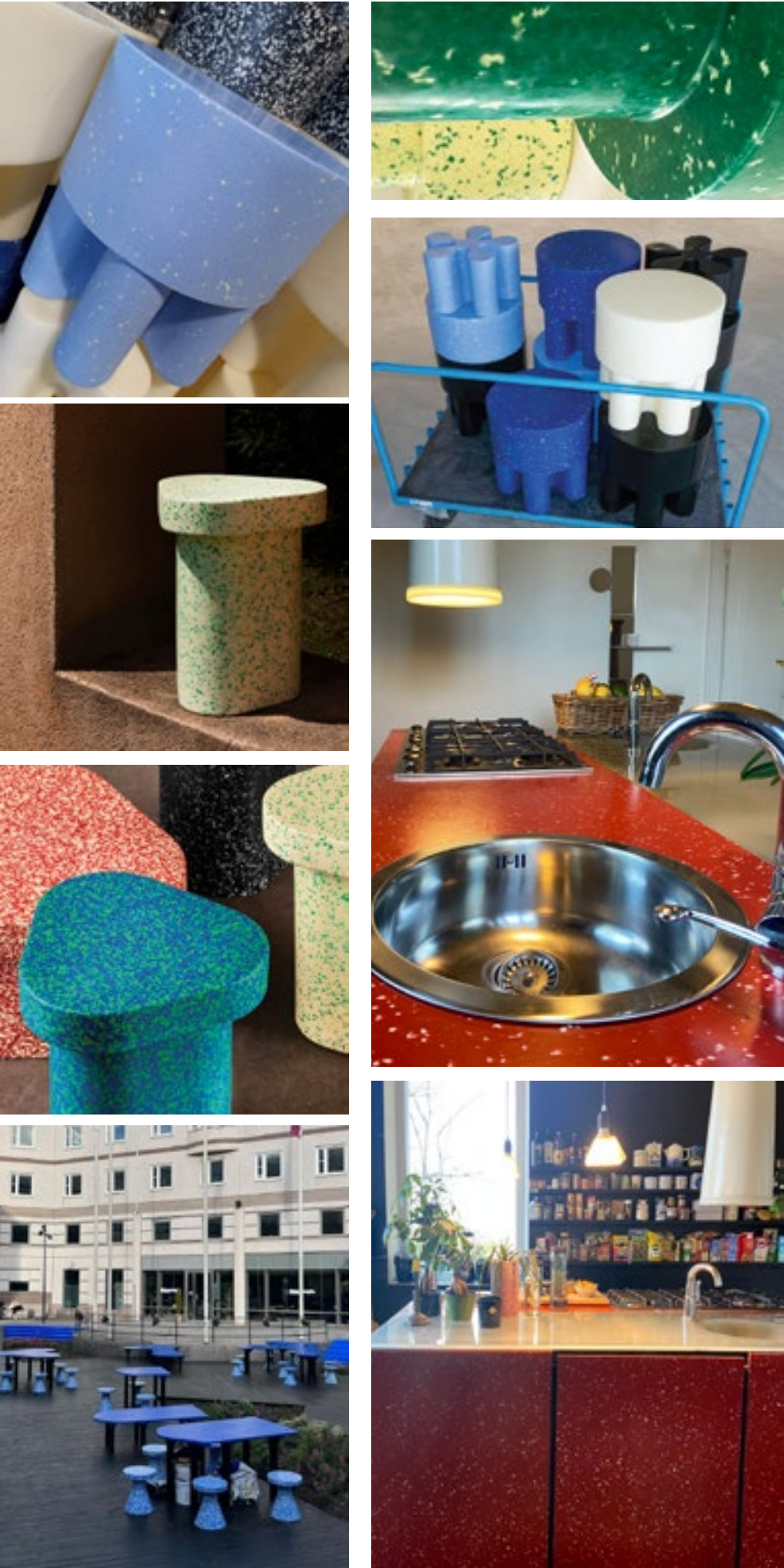
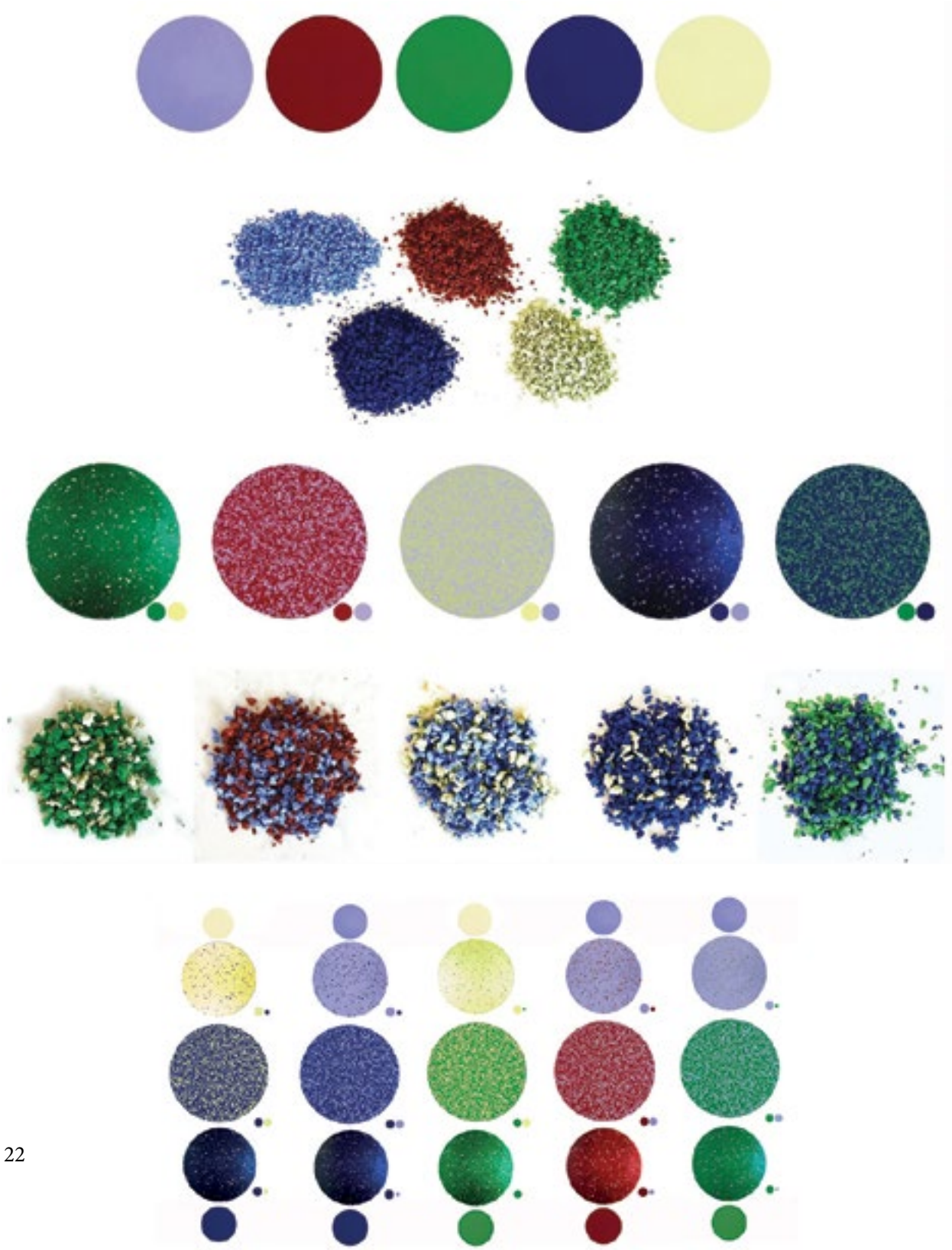
ecopixel ENCANTO

PIGMENTED by ecopixel®



# ecopixel ENCANTO

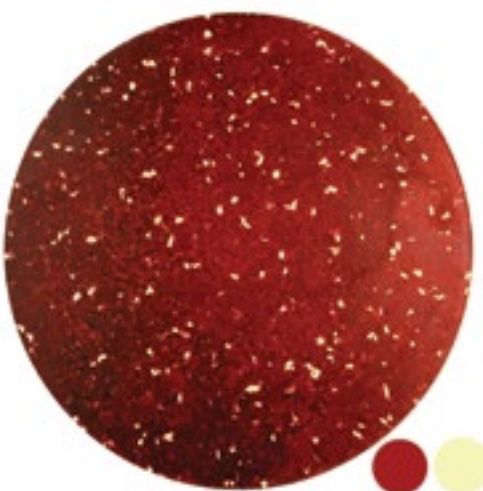
by Mariandrea Zambrano: A group of 32 colors based on a specific color study inspired by the Colombian Cultural Heritage. ENCANTO Was created thanks to the pigmentation of recycled plastics and, therefore, precisely follows the color study as was intended, creating an extremely balanced color palette.



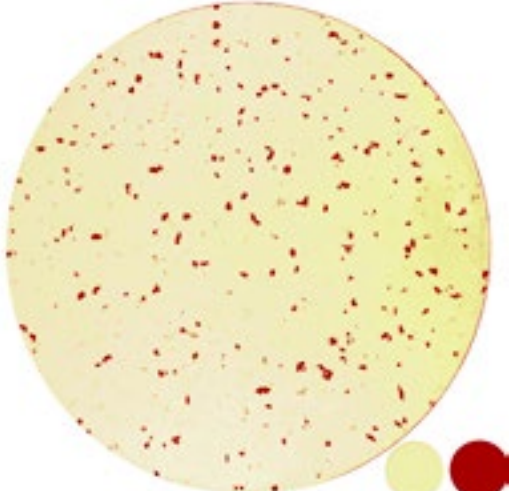




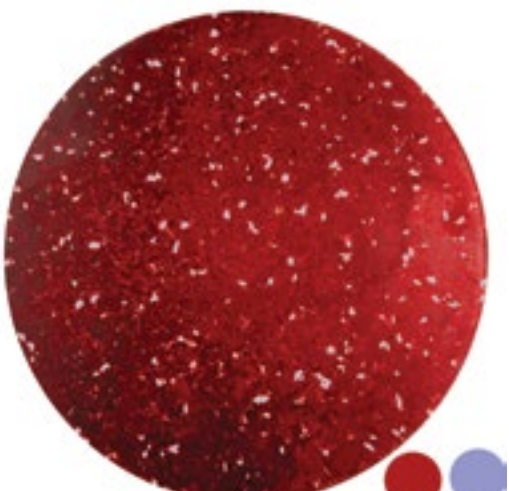
eco-205e WINE  
ECO\*\*\*



eco-206e BRANDY  
ECO\*\*\*



eco-207e LINSEED  
ECO\*\*\*



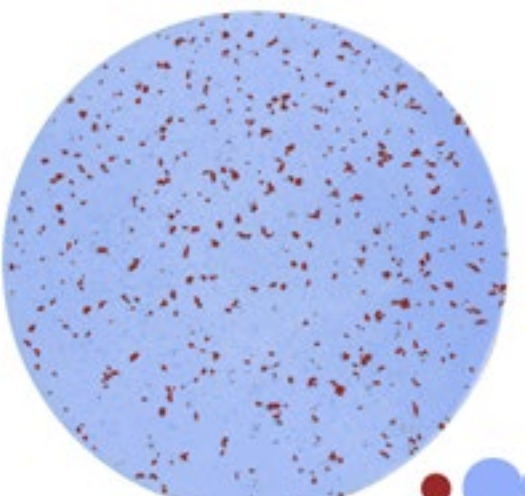
eco-208e TWILIGHT LAVANDER  
ECO\*\*\*



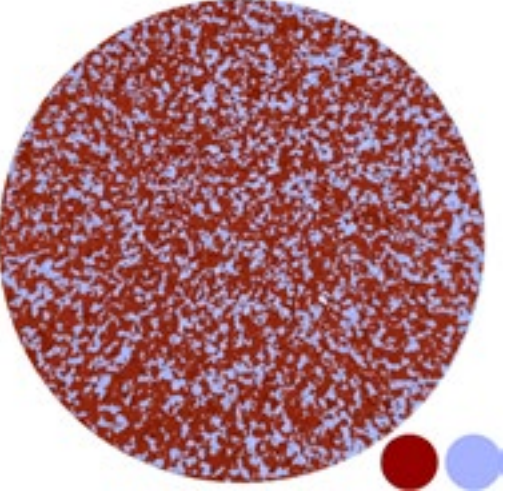
eco-209e KEY LIME  
ECO\*\*\*



eco-210e REDWOOD  
ECO\*\*\*

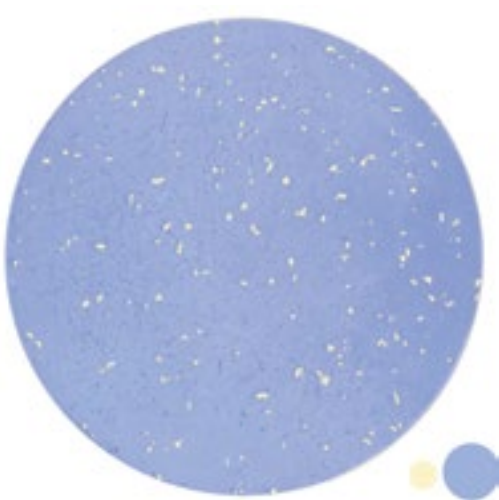


eco-211e LAVANDER  
ECO\*\*\*

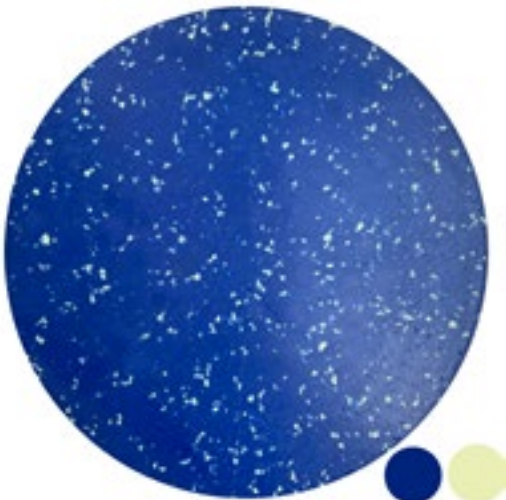


eco-212e COLOMBIAN LILA  
ECO\*\*\*

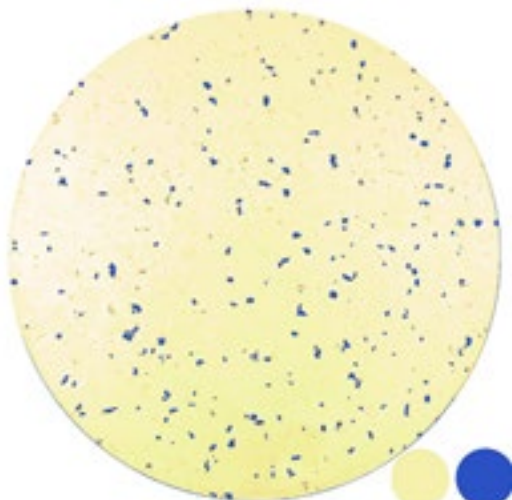




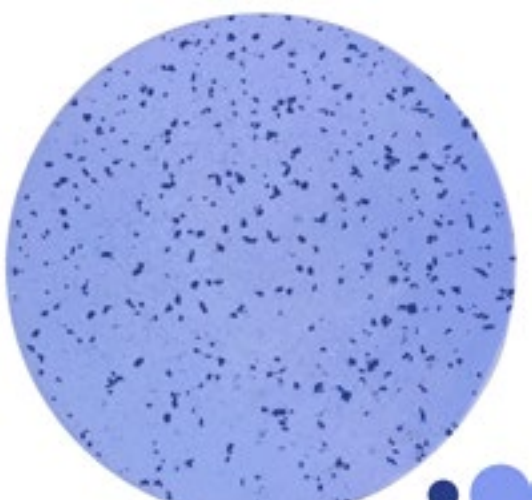
eco-213e    **BLUE YONDER**  
ECO\*\*\*    




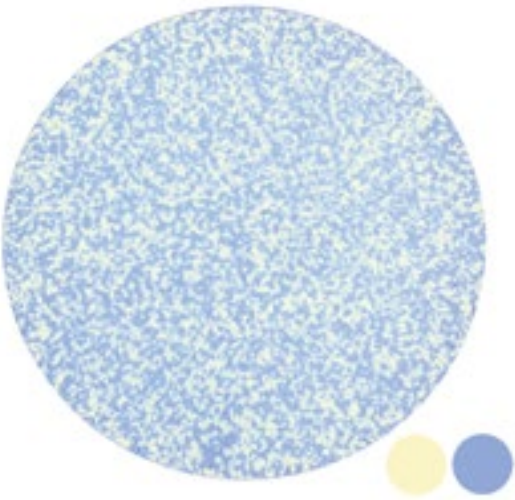
eco-214e    **MIDNIGHT NAVY**  
ECO\*\*\*    




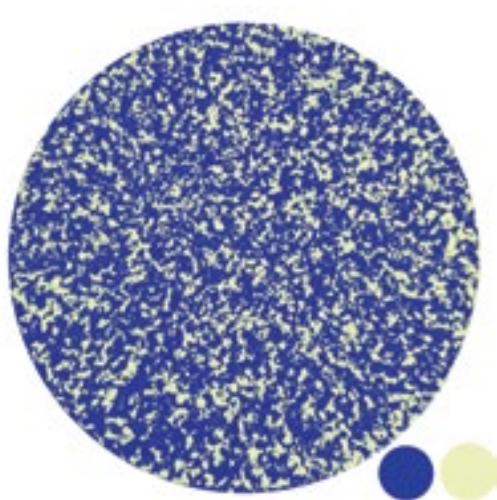
eco-215e    **SAGE**  
ECO\*\*\*    




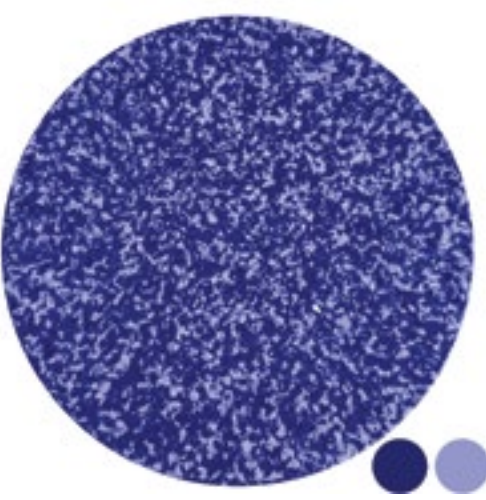
eco-216e    **VIOLET BLUE**  
ECO\*\*\*    



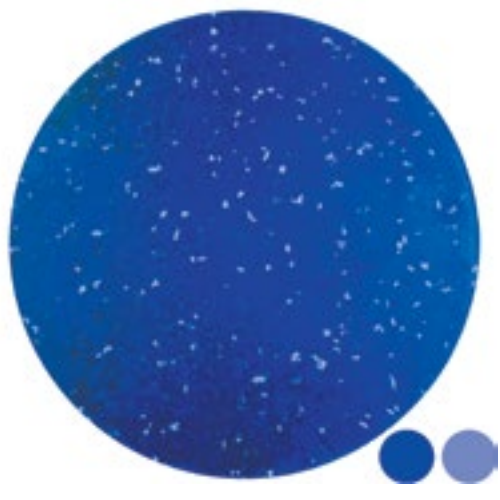
eco-217e    **SILVER SAND**  
ECO\*\*\*    




eco-218e    **SLATE BLUE**  
ECO\*\*\*    

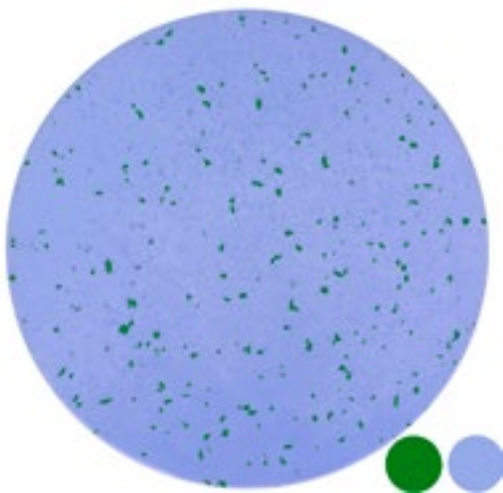



eco-219e    **LIBERTY**  
ECO\*\*\*    

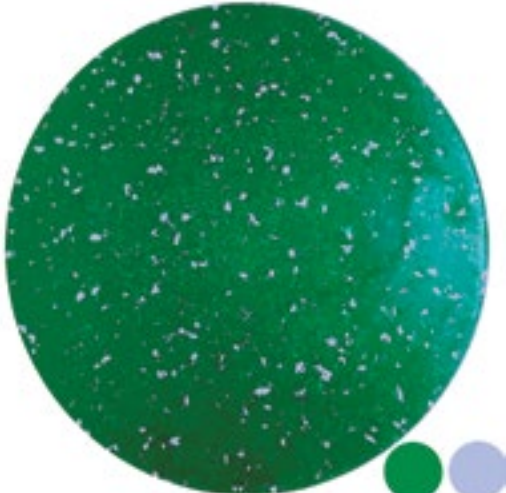



eco-220e    **MIDNIGHT VIOLET**  
ECO\*\*\*    

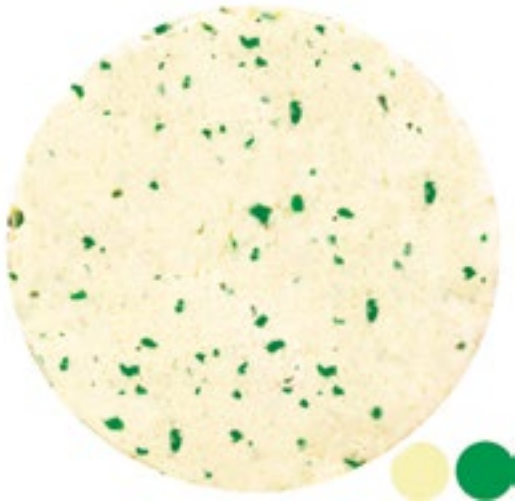





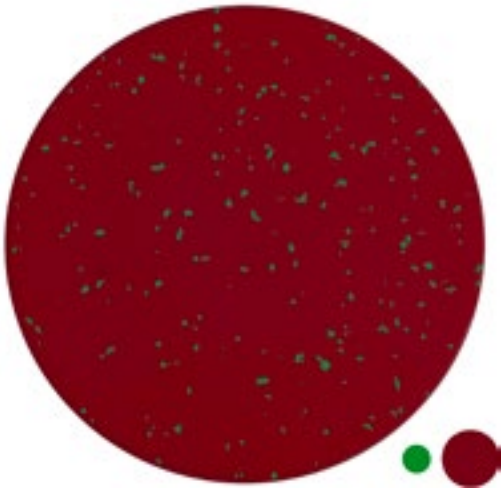
eco-221e CERULEAN FROST  
ECO\*\*\* 



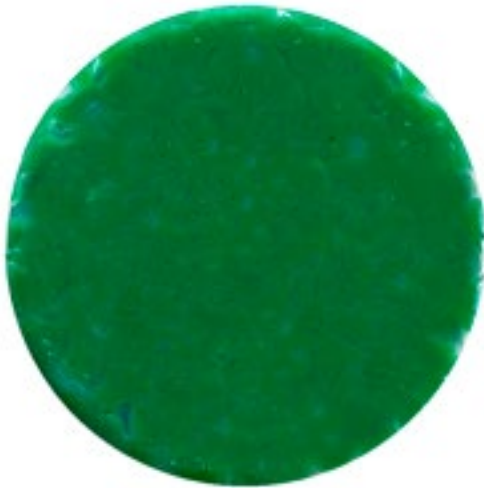
eco-222e SILVER TEAL  
ECO\*\*\* 



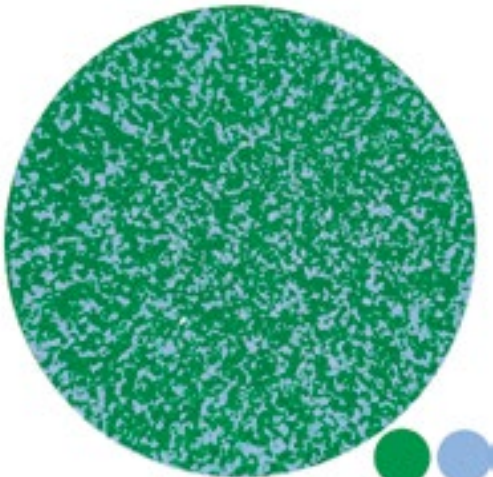
eco-223e PISTACHIO  
ECO\*\*\* 




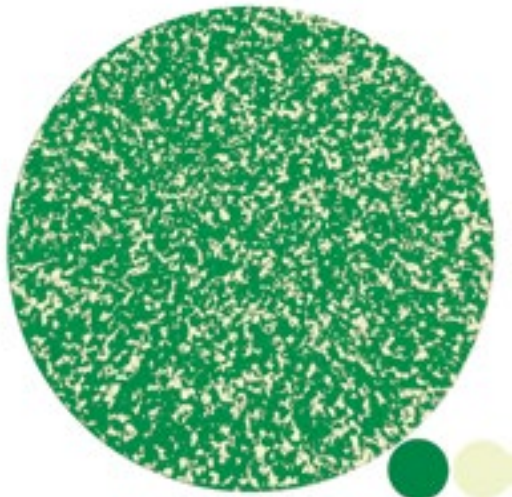
eco-224e TINTO  
ECO\*\*\* 



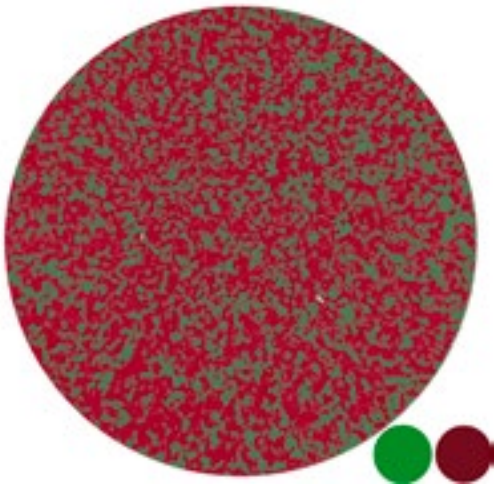
eco-225e FOREST GREEN  
ECO\*\*\* 



eco-226e EMERALD  
ECO\*\*\* 

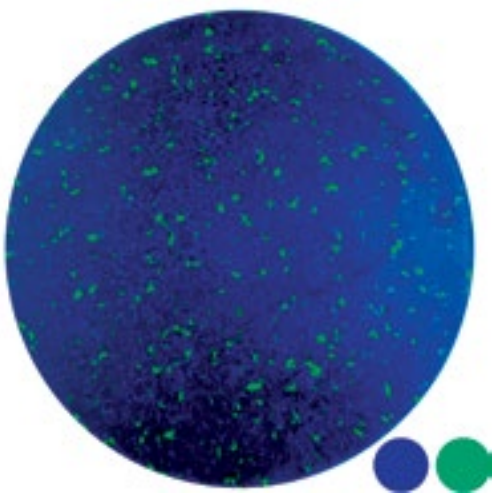



eco-227e KIWI  
ECO\*\*\* 

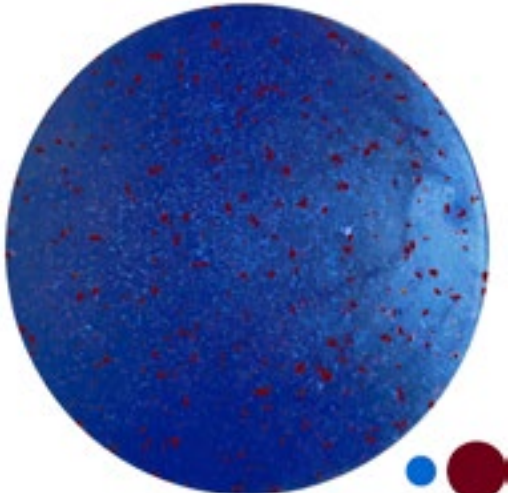



eco-228e KUNA  
ECO\*\*\* 

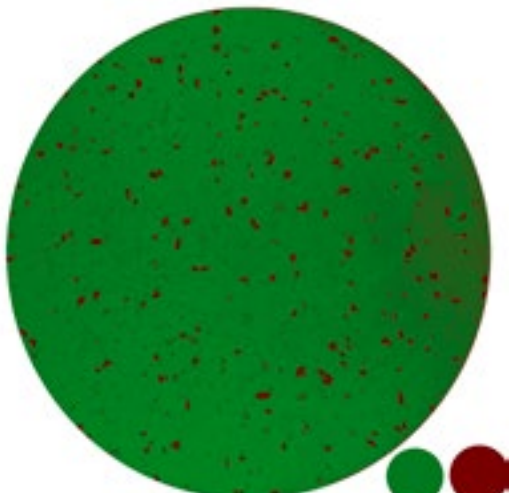





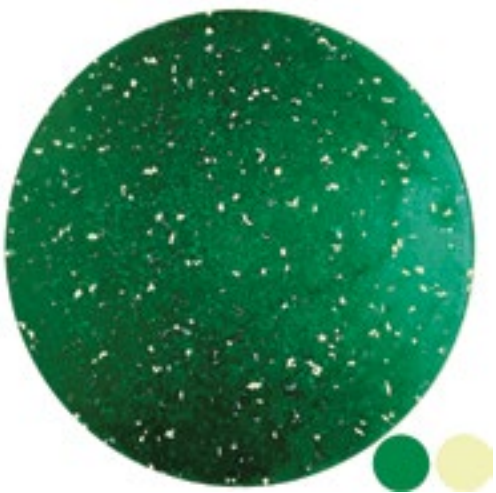
eco-229e ROYAL BLUE  
ECO\*\*\* 




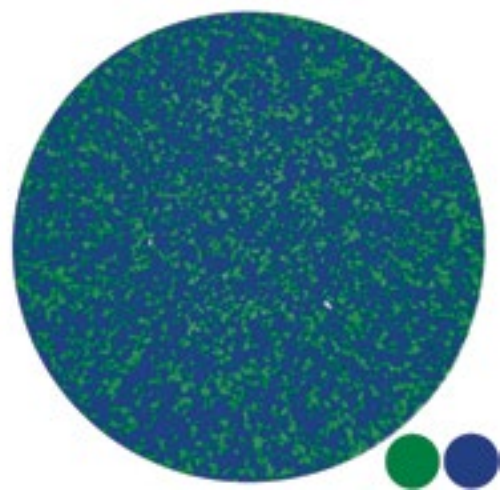
eco-230e ULTRAMARINE  
ECO\*\*\* 




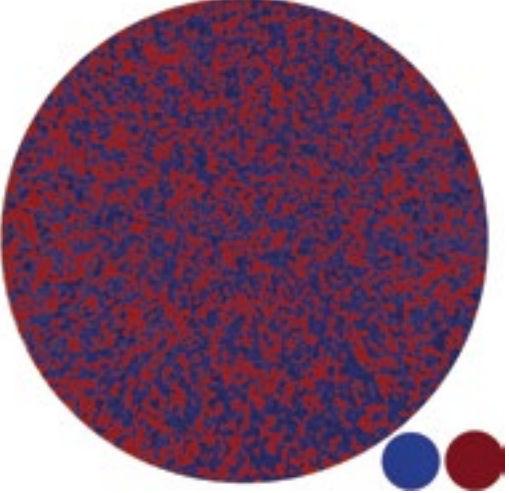
eco-231e HUNTER GREEN  
ECO\*\*\* 




eco-232e MAY GREEN  
ECO\*\*\* 




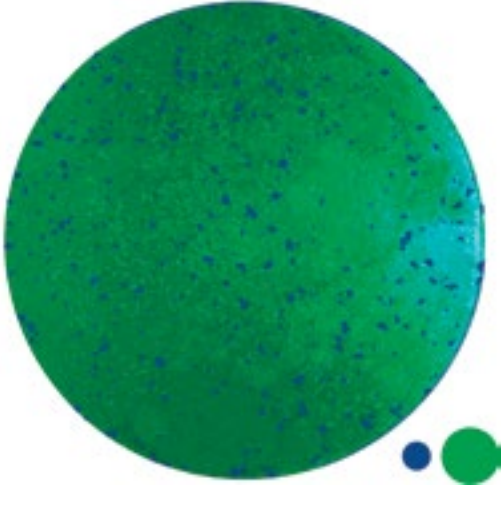
eco-233e EAGLE GREEN  
ECO\*\*\* 




eco-234e TYRIAN PURPLE  
ECO\*\*\* 



eco-235e MIDNIGHT BLUE  
ECO\*\*\* 



eco-236e CASTLE GREEN  
ECO\*\*\* 

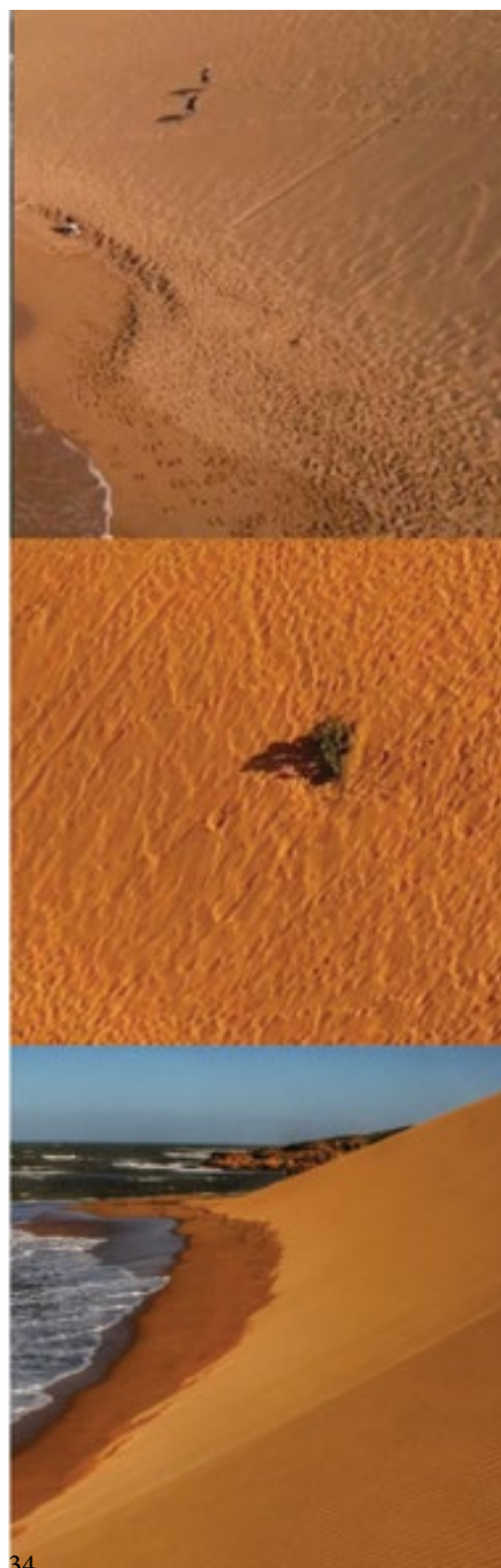
colors

ecopixel GUAJIRA

PIGMENTED by ecopixel®



## ecopixel GUAJIRA



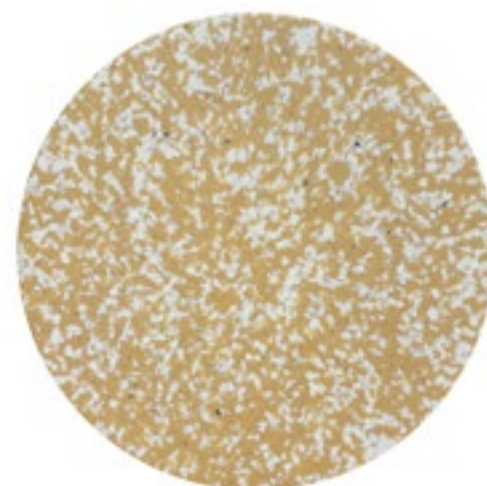
eco-301g  
ISASHII - Mi Tierra

ECO\*\*\*



eco-302g  
YUUI - TABACO

ECO\*\*\*



eco-303g  
OORO

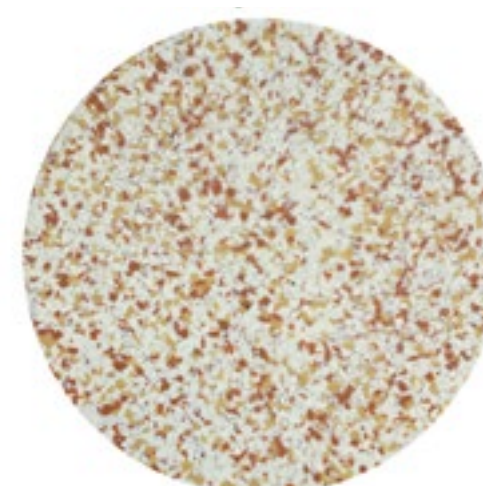
ECO\*\*\*



GUAJIRA color palette, by Mariandrea Zambrano, is inspired by **the beautiful contrasts of the Guajira Desert in Colombia and includes warm and muted tones.**

It fits elegantly into any environment, matching with natural colors such wood, leather, cork, stone...

GUAJIRA was created thanks to the pigmentation of recycled plastics and therefore precisely follows the color study as was intended, creating this extremely balanced color palette.



eco-306g  
MAIKKI - MAIZ

ECO\*\*\*



eco-307g  
KOJEE - CAFE

ECO\*\*\*







**eco-304g**  
**MAPA - MIEL**

ECO\*\*\*



**eco-305g**  
**ICHII - SAL**

ECO\*\*\*



**eco-308g**  
**ASEYUU-ESPIRITU**

ECO\*\*\*



**eco-309g**  
**KASHI - LUNA**

ECO\*\*\*



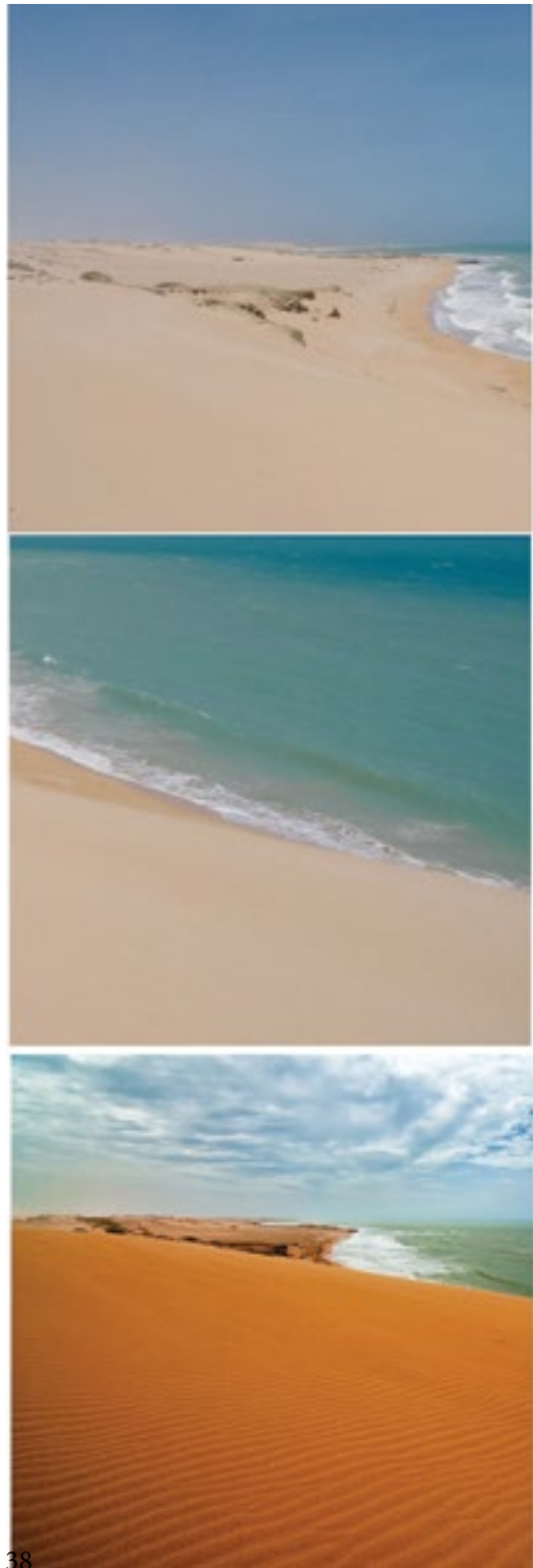
**eco-310g**  
**JASAI-ARENA**

ECO\*\*\*




\* The names of the colors have been inspired by the Wajuu language. The Wayuu are an Indigenous ethnic group of the Guajira Peninsula in northernmost Colombia.







eco-314g  
PALAA - MAR  
ECO\*\*\*



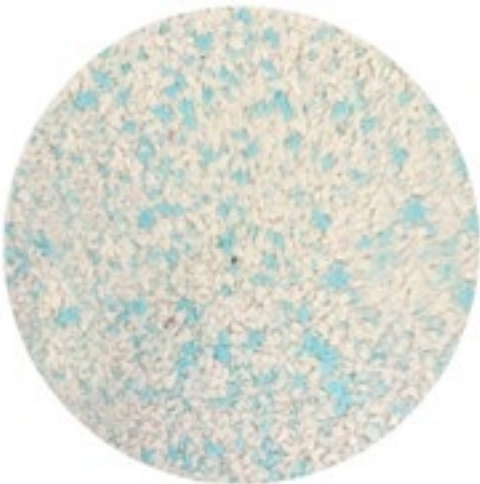

eco-309g  
KAI - SOL  
ECO\*\*\*



eco-322g  
MMA-MadreTierra  
ECO\*\*\*



eco-315g  
TAPULA- PARA MI  
ECO\*\*\*




eco-316g  
ISSASHII -DESIERTO  
ECO\*\*\*




eco-312g  
LEECHI - LECHE  
ECO\*\*\*



eco-311g  
TOOLO -HOMBRE  
ECO\*\*\*



eco-313g  
SIRUMA-NUBE  
ECO\*\*\*



38 \* The names of the colors have been inspired by the Wajuu language. The Wayuu are an Indigenous ethnic group of the Guajira Peninsula in northernmost Colombia.



The stillness of the clear blue skies of the Guajira Peninsula is interrupted by intense pink glows that dissolve in spirals over the lagoons of **the Santuario de Los Flamencos**: tall, slender birds with pink plumage.



eco-321 g  
IPA - PIEDRA

ECO\*\*\*



eco-318g  
SIKI -FUEGO

ECO\*\*\*



eco-324g  
ISHOO - ROJO

ECO\*\*\*



eco-323g  
ISHA- SANGRE

ECO\*\*\*



eco-320g  
TASIMA-MI LENA

ECO\*\*\*



eco-317g  
MALOUKATA - AMARILLO

ECO\*\*\*



\* The names of the colors have been inspired by the Wajuu language. The Wayuu are an Indigenous ethnic group of the Guajira Peninsula in northernmost Colombia.

colors

ecopixel MAROON

PIGMENTED by ecopixel®



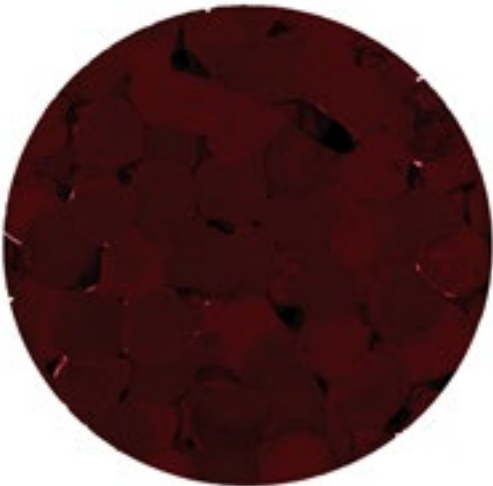


ecopixel MAROON

ecopixel MAROON

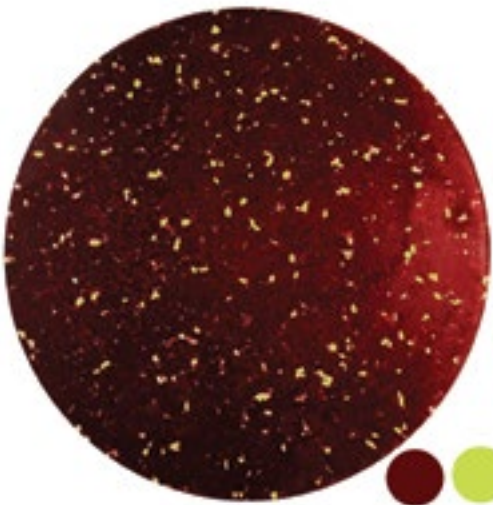
## ecopixel MAROON

MAROON is the first in a group of colors that become popular at the time, which are useful in areas where new products are constantly emerging. **A color trend** that indicates a direction; a **developing awareness or emerging preference during a specific period.**



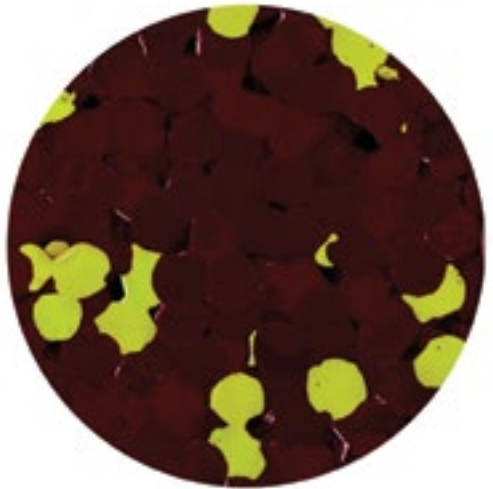
eco-350M  
MAROON

ECO\*\*\*



eco-351M  
MAROON - GREEN

ECO\*\*\*



eco-351M POINT  
MAROON -GREEN

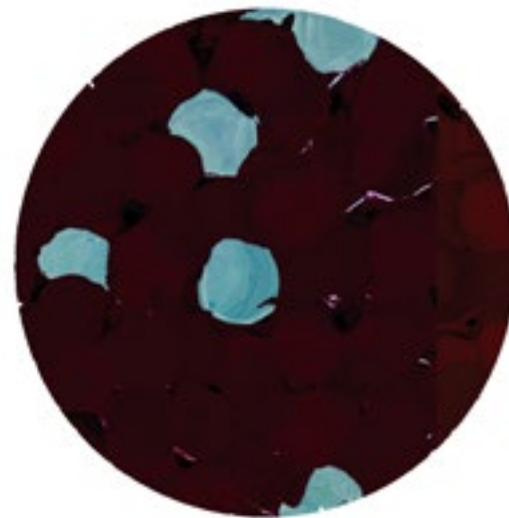
ECO\*\*\*





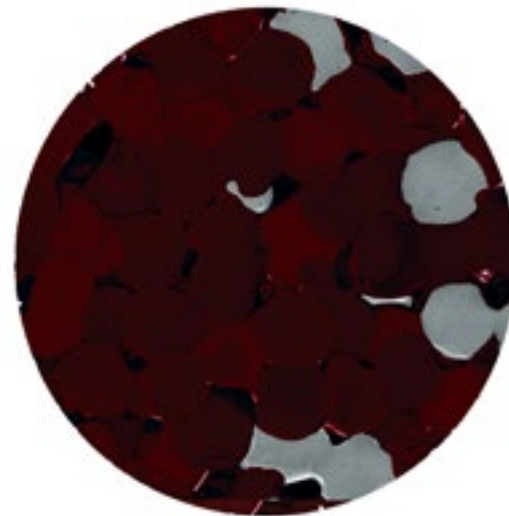
eco-352M POINT  
MAROON -ACQUA

ECO\*\*\*



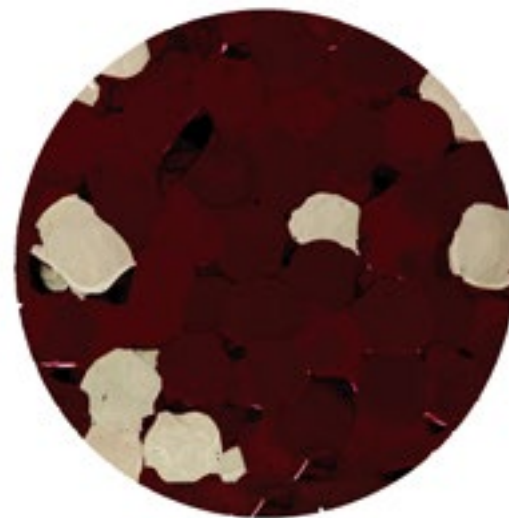
eco-353M POINT  
MAROON -GREY

ECO\*\*\*



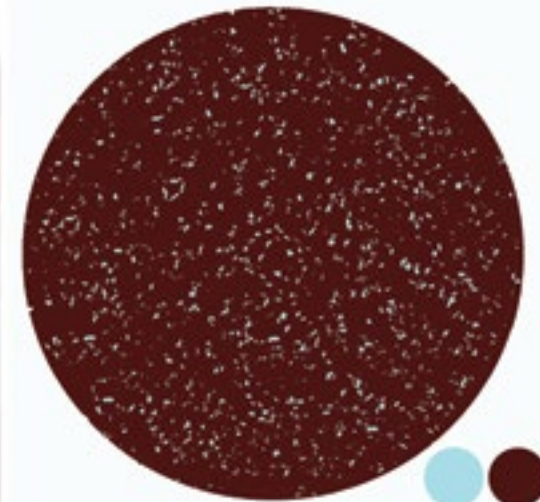
eco-354M POINT  
MAROON -SAND

ECO\*\*\*



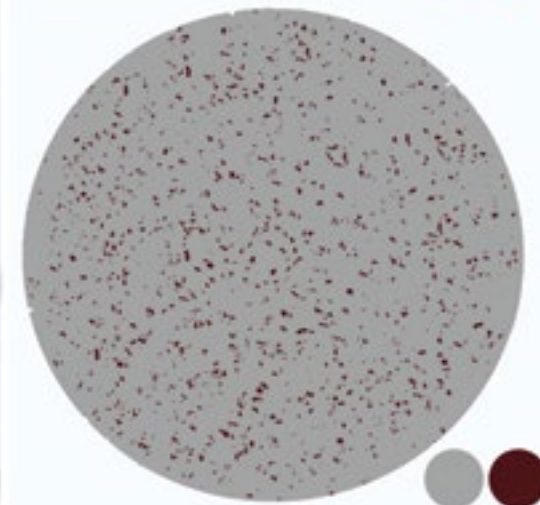
eco-352M  
MAROON-ACQUA

ECO\*\*\*



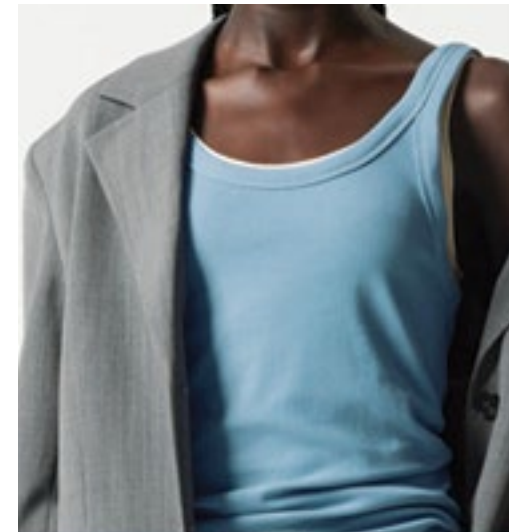
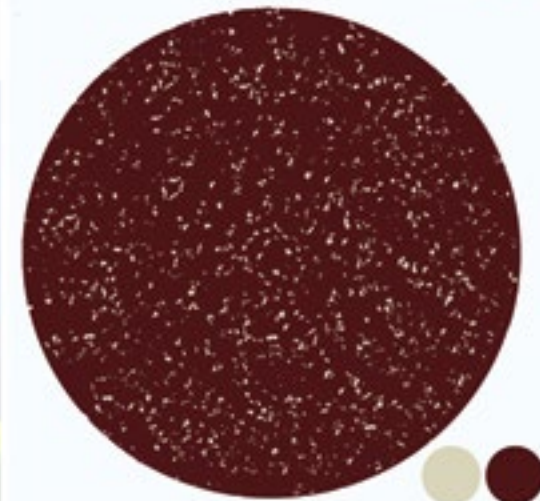
eco-353M  
MAROON -GREY

ECO\*\*\*



eco-354M  
MAROON -SAND

ECO\*\*\*








**ecopixel**  
**SOTTASS MXP**


Inspired by  
Malpensa Terminal 1, Milan

eco- 018  
SOTTASS-MXP  
ECO\*\*\* 



**ecopixel Ro**




eco- 017  
ROSSANA ORLANDI  
ECO\*\*\* 



**ecopixel**  
**BLUE de GASCOGNE**



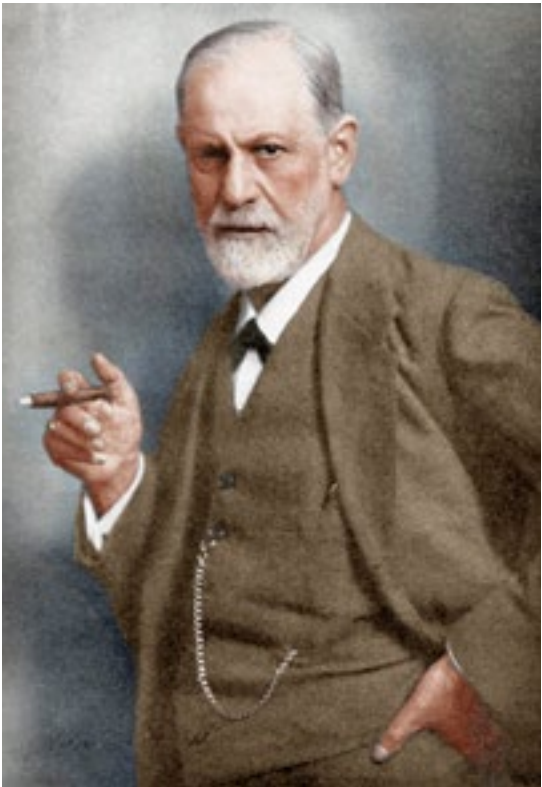
eco-052  
BLUE DE GASCOGNE  
ECO\*\*\* 

# colors

ecopixel FREUD



### Sigmund Freud color division

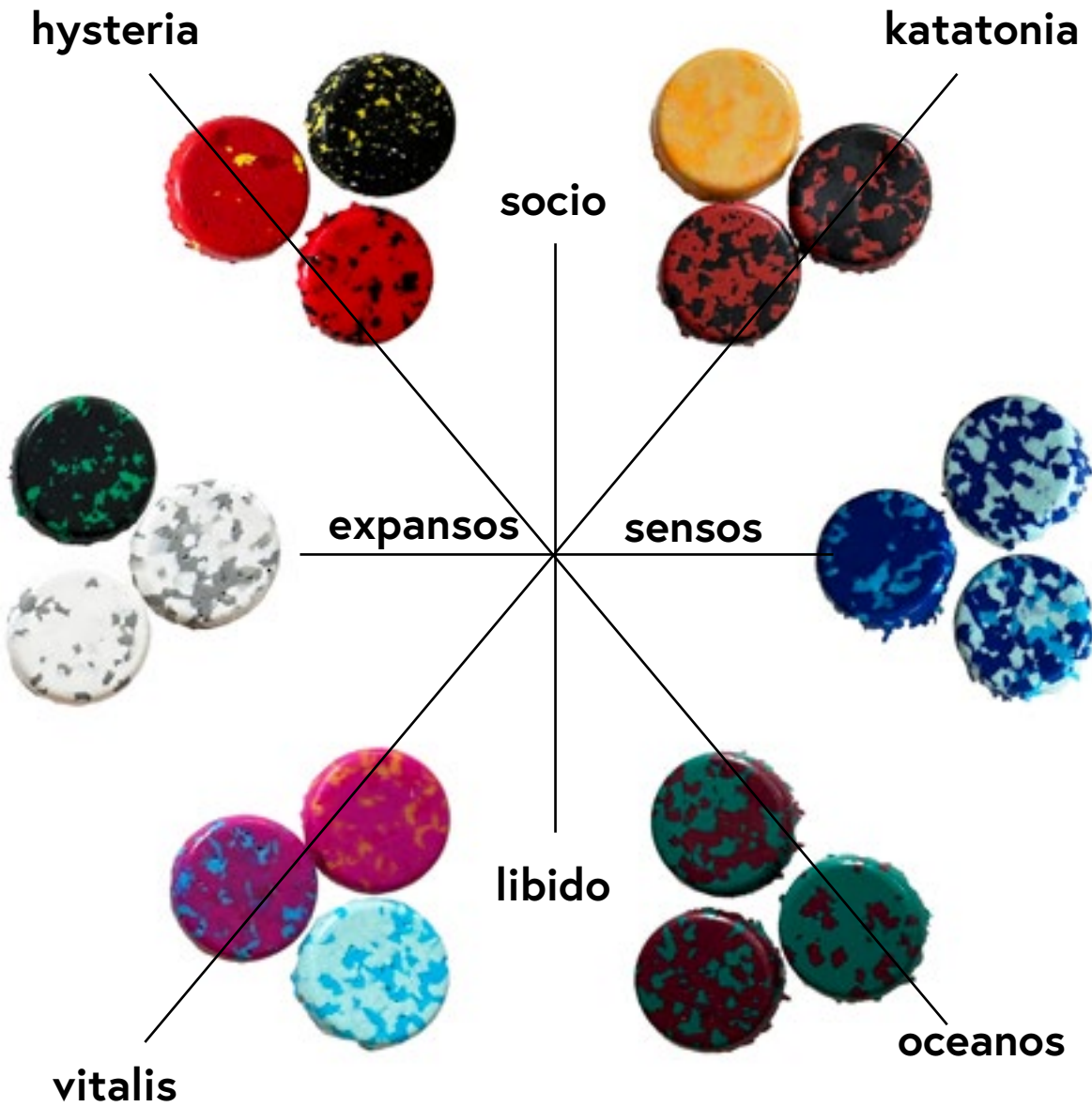


People are categorized into six distinct groups based on their character divergence.

Sigmund Freud (1856-1939) noted that these character divergences are also linked to the taste and appreciation for visual preferences. **This division reflects their unique color preferences**, particularly when individuals are classified according to their libido control and differences in social pressure. Each character tends to favor specific colors.

Freud’s analysis of color has become **an essential marketing tool** and a key aspect of his motivation theory, highlighting the unconscious needs of individuals and consumers, as well as how those needs can be fulfilled. Therefore, **the use of a particular color for a product can significantly influence its commercial success**. In this regard, ECOPIXEL introduces six groups, each containing three colors that correspond to these categories,

### ecopixel FREUD color division



KATATONIA



eco-451F  
KATATONIA 1



eco-452F  
KATATONIA 2



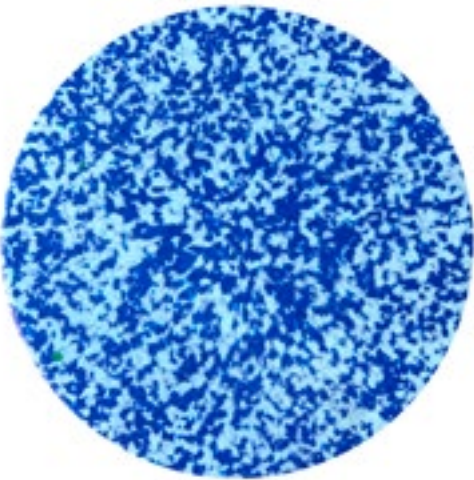
eco-453F  
KATATONIA 3



SENSOS



eco-411F  
SENSOS 1



eco-412F  
SENSOS 2



eco-413F  
SENSOS 3





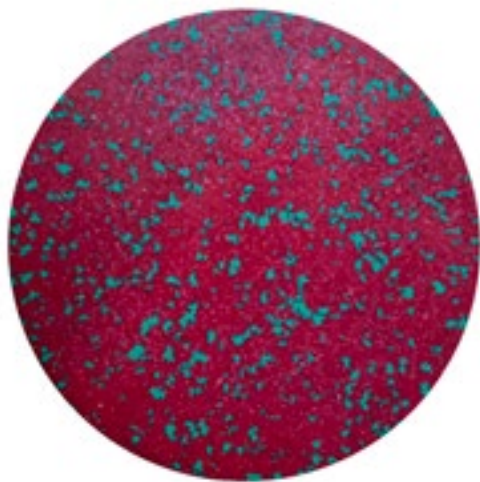
OCEANOS



eco-421F  
OCEANOS 1



eco-422F  
OCEANOS 2



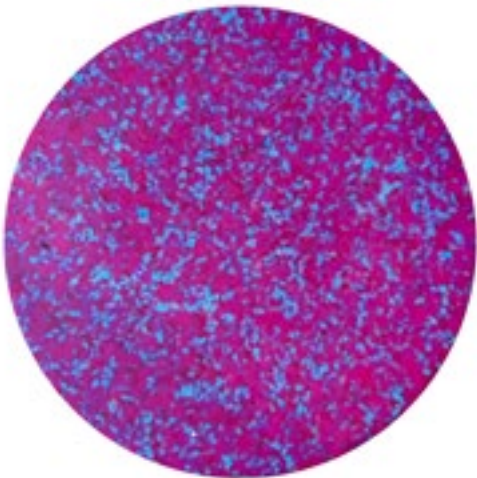
eco-423F  
OCEANOS 3



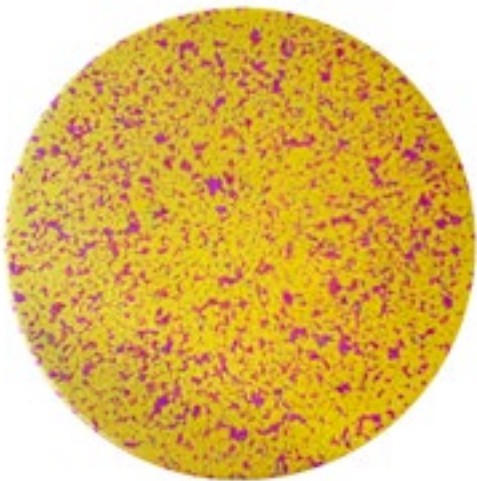
VITALIS



eco-441F  
VITALIS 1



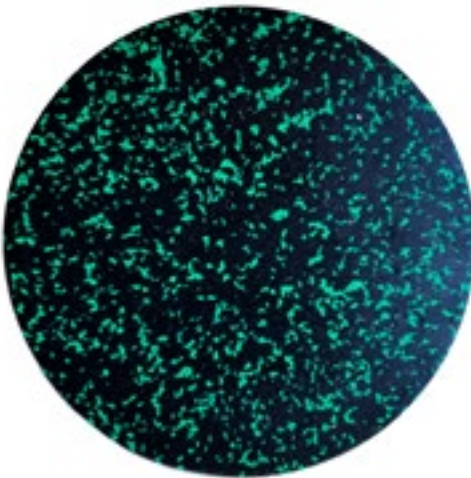
eco-442F  
VITALIS 2



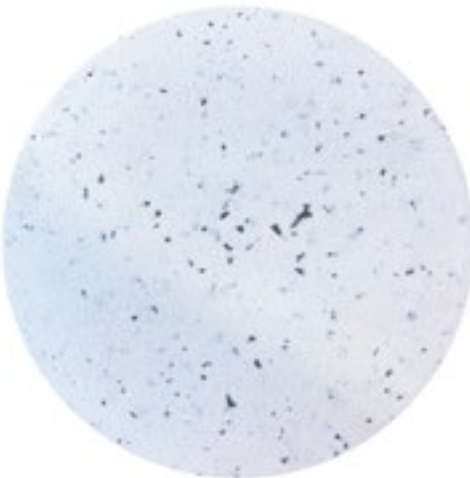
eco-443F  
VITALIS 3



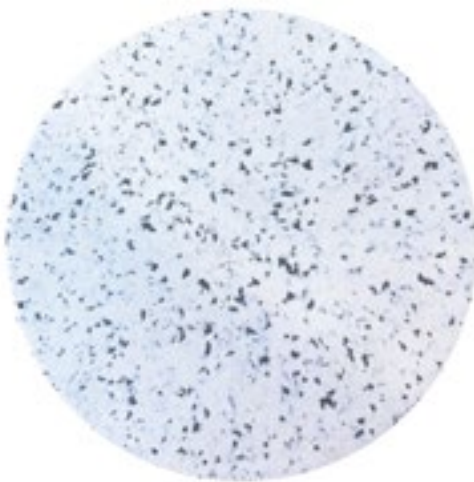
EXPANSOS



eco-401F  
EXPANSOS 1



eco-402F  
EXPANSOS 2



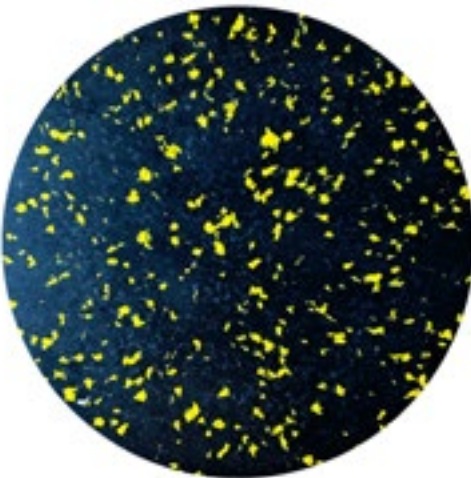
eco-403F  
EXPANSOS 3



HYSTERIA



eco-431F  
HYSTERIA 1



eco-432F  
HYSTERIA 2



eco-433F  
HYSTERIA 3





# textures

## Typologies

# ecopixel STANDARD

## ecopixel STANDARD

6-8 millimeter irregular pixel.

### Composition

PELD4/PERT/PEHD

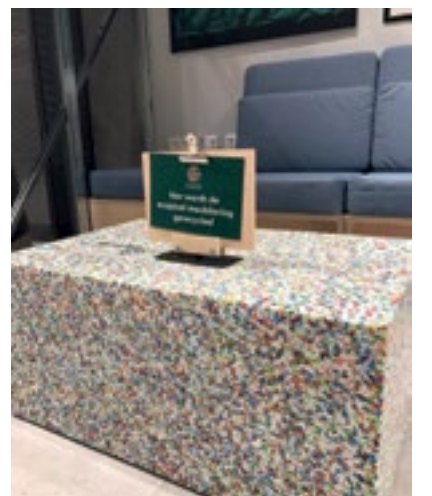
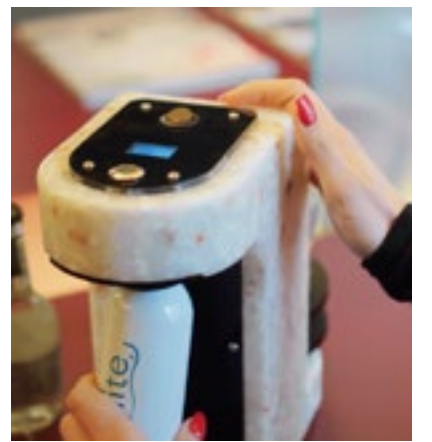
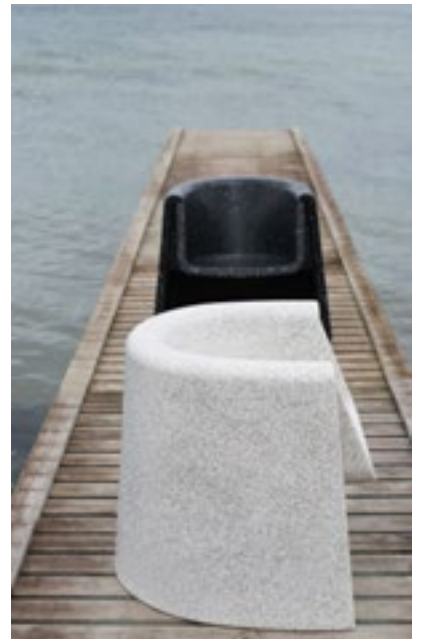
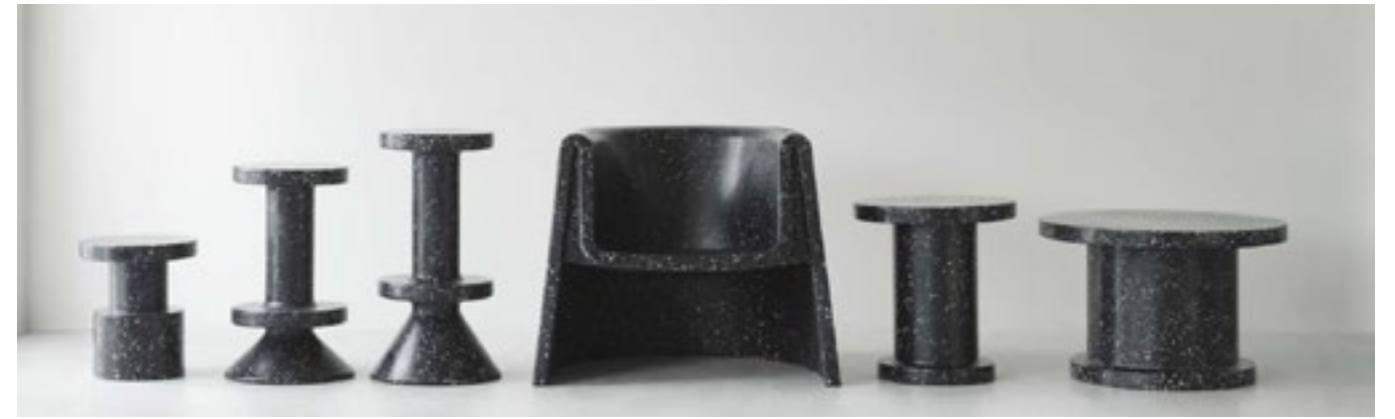
### Source

Post Industrial / Pack-  
ing-Automotive-Construc-  
tion & Post Consumer

### Recycled content

80 to 100%

Our standard 6/8 mm size shredding will lead to the typical “terrazzo effect” and is available in all colors mentioned.







#### ecopixel MINI

3-4 millimeter irregular pixel.

#### Composition

PELD4/PERT/PEHD

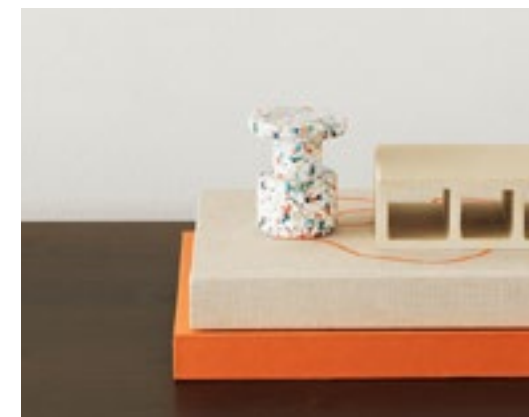
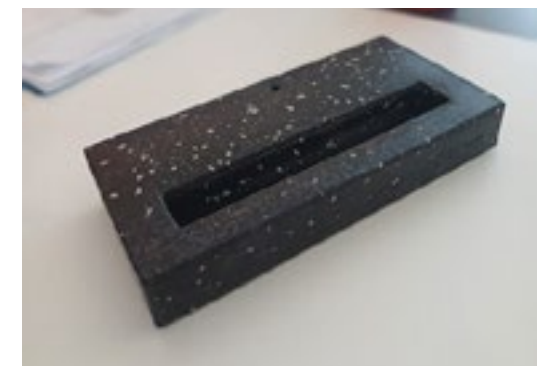
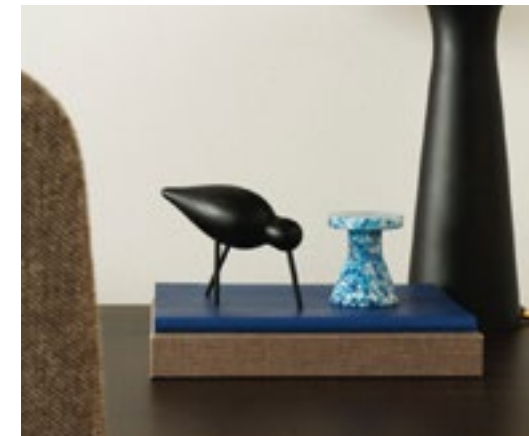
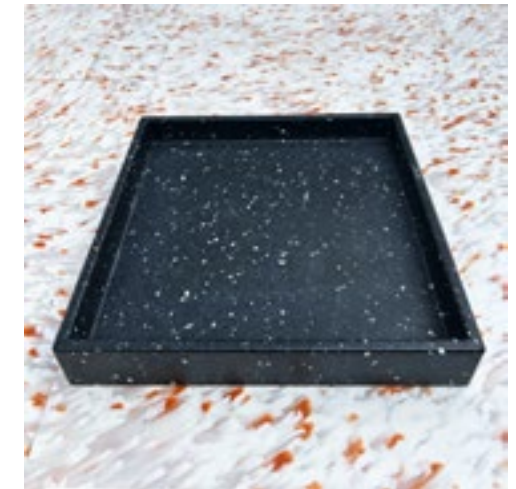
#### Source

Post Industrial / Pack-  
ing-Automotive-Const-  
ruction & Post Consumer

#### Recycled content

80 to 100%

Smaller size pixels are usually requested/applied in smaller objects or where smaller Radia are present. In the same way, we can also deliver a larger pixel. Larger pixels, however, may complicate superficial finish and or leave holes at sharp angles. Our sales team and instructions will be able to inform you at your request and advise where needed.





# ecopixel PROUST

PROUST decor by Alessandro Mendini © 2017

## ecopixel DOTS

Open pixel Ø18mm  
98% recycled pLastics  
(plus 2% pigment)

### Composition

PELD4

### Source

Post Industrial / Packing

### Recycled content

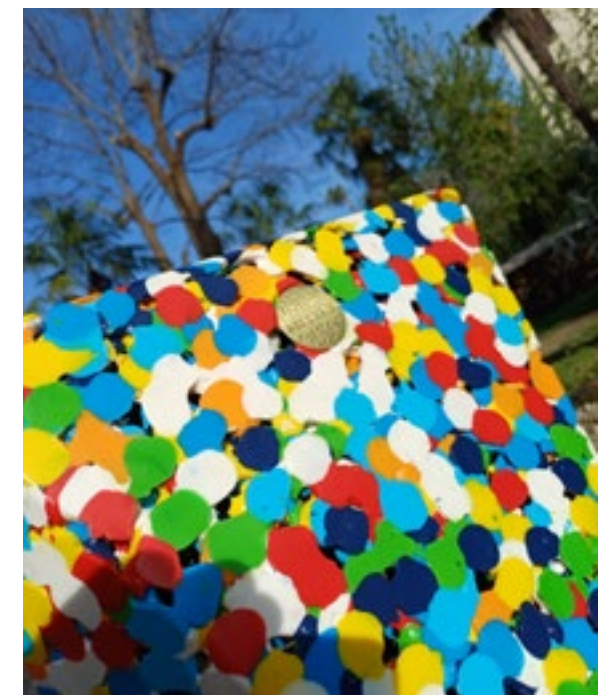
98%

2% Ink

## DOTS

Diameter 18mm pixel shows a result as an almost impressionistic work of art. Especially advised for larger objects due to the large pixel size.

The DOTS effect will show the open structure feature maintaining its structural capacity.



1. Alessandro Mendini photo by max&douglas
2. ALEX Chaise longue design by A. Mendini

Color range designed by Alessandro Mendini, produced in 98% recycled plastics (where 2% represents the mere pigment).

The material is 100% recycled pigmented polyethylene PELD industrial waste from packing foil. The diameter of 18 mm was studied according to specific indications of Alessandro Mendini © 2017, In its magnificent 7-color plus white color mix.





# ecopixel AUDIO

<b>ecopixel AUDIO</b> Sound absorbing internal texture. Superficial texture Special effect © 2024
<b>Composition</b> PELD4
<b>Source</b> Post Industrial / Packing Automotive
<b>Recycled content</b> 100%

## ECOPIXEL AUDIO —

By intentionally mixing waste materials, ECOPIXEL developed a specific layered recycled plastic that forms a sandwich-like material, transitioning from a rough inner layer to an almost high-density outer layer. The excellent sound absorption properties of this material led to the creation of “ECOPIXEL AUDIO,” making it perfect for speaker enclosures, especially since ECOPIXEL can shape it into any form, even hollow designs.



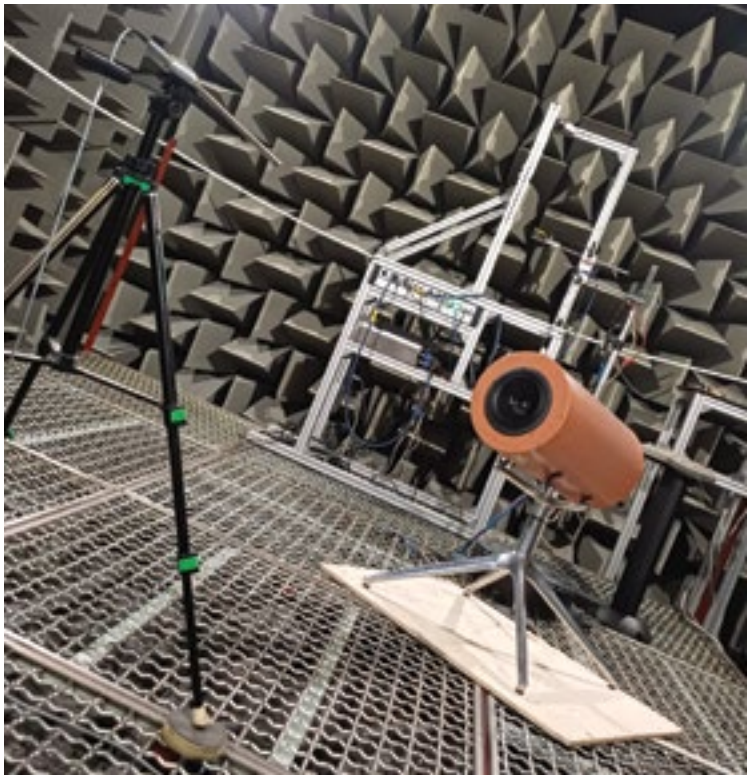
EYE D256 BT – 5,5 inch coaxial, rear-facing bass reflex, active class D amplified Bluetooth speaker unit.



ALTO - Free standing., with down-facing bass reflex, active class D amplified Bluetooth speaker unit.



GHETTO BLASTER - Promotional project 2019  
Bluetooth portable design offering 120 watts of RMS “portable power”



DRUM D260 BT – 6,5 inch coaxial, rear-facing bass reflex, active class D amplified Bluetooth speaker





# ecopixel TRANSLUCID

70

eco-010 TRANSLUCENT WHITE



**ecopixel TRANSLUCID**  
Illuminates with high  
uniformity

## Composition

PELD

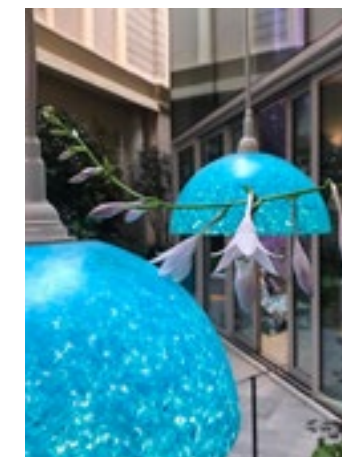
## Source

Post Industrial / Post  
consumer

## Recycled content

80-100%

A range of colors are available  
for illumination, often request-  
ed in a “translucid” quality for  
their illumination effect. Please  
be sure you specifically indicate  
this quality if requested.



## ECOPIXEL TRANSLUCID

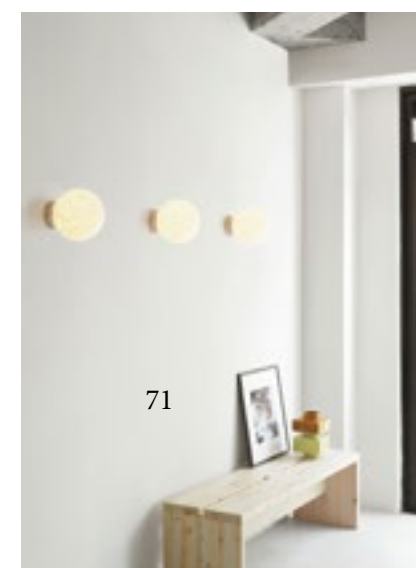
Allowing light to pass through.

Only a specific selection of translucid waste material will  
lead to this magical effect. Studying combinations of trans-  
lucid and non-translucid pixels can create an even more  
interesting game of light. ECOPIXEL can guide you with  
experience.



- 1907 FLOOR  
LAMP  
- ECOPIXEL-  
BLUEMOON  
16cm diameter  
- ECOPIXEL  
LUNA Ceiling  
lamp

Normann Copenhagen © 2022 Pix Lamp collection.



71





# ecopixel WATERPROOF

## ecopixel WATERPROOF

Fitted so that no water enters or passes through

### Composition

PELD4/PERT/PEHD

### Source

Post Industrial / Packing-Automotive-Construction & Post Consumer

### Recycled content

80 to 100%

We advise how to mix and produce watertight versions of our materials, obtaining qualities that match with bathroom products or outdoor applications among others.



LTT LIGHT TUB / Free standing bathtub by WET ITALIA



ECORAZZO by CLOU NL



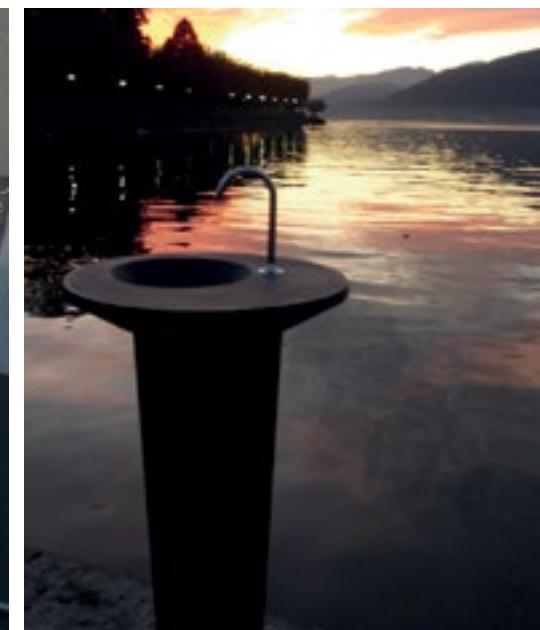
LTB LIGHT BASIN/ by WET ITALIA



HOST - Washbasin



MR BIG - Free standing washbasin





# ecopixel ALABASTER

## ecopixel ALABASTER

Neutral “Alabaster” uniform colored / eco-000

### Composition

PELD4

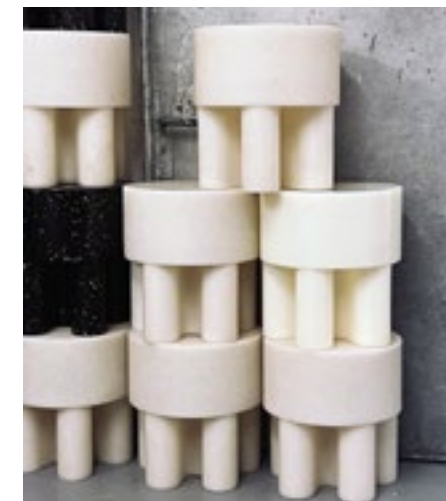
### Source

Post Industrial / Packing

### Recycled content

100%

The ancient world of Alabaster has been the inspiration of this new typology of colors – In its plain “eco-000” version as an almost look through milk white, but soon available with a range of interesting color hints.







# ecopixel RINGS

## ecopixel RINGS

Open ring structured

### Composition

PERT

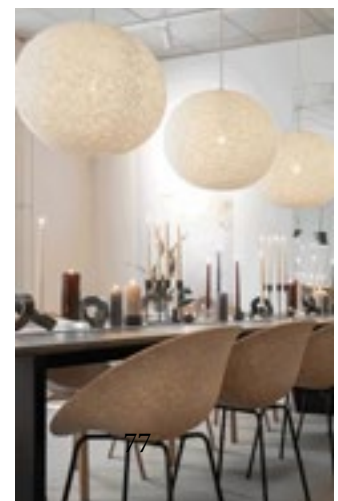
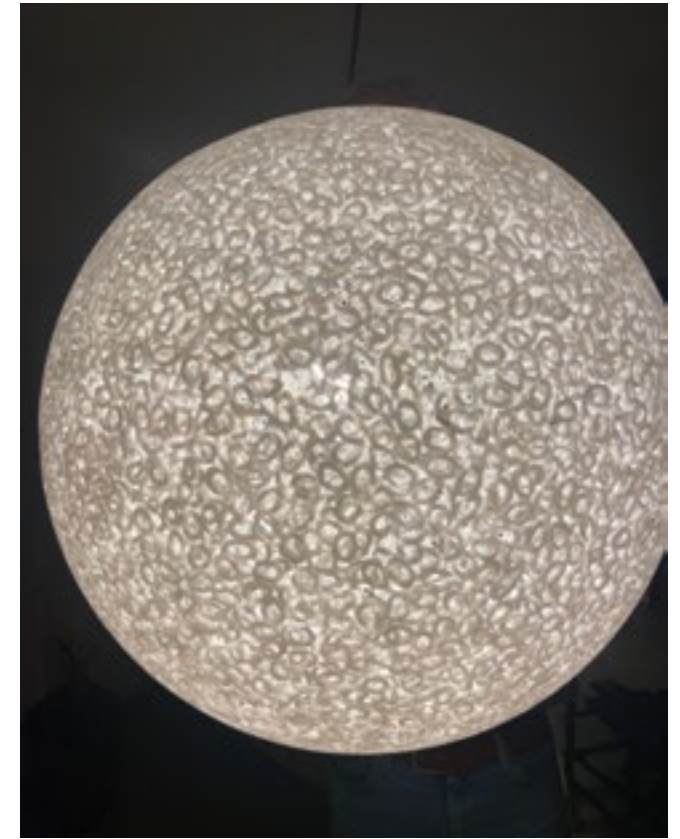
### Source

Post Industrial / Construction

### Recycled content

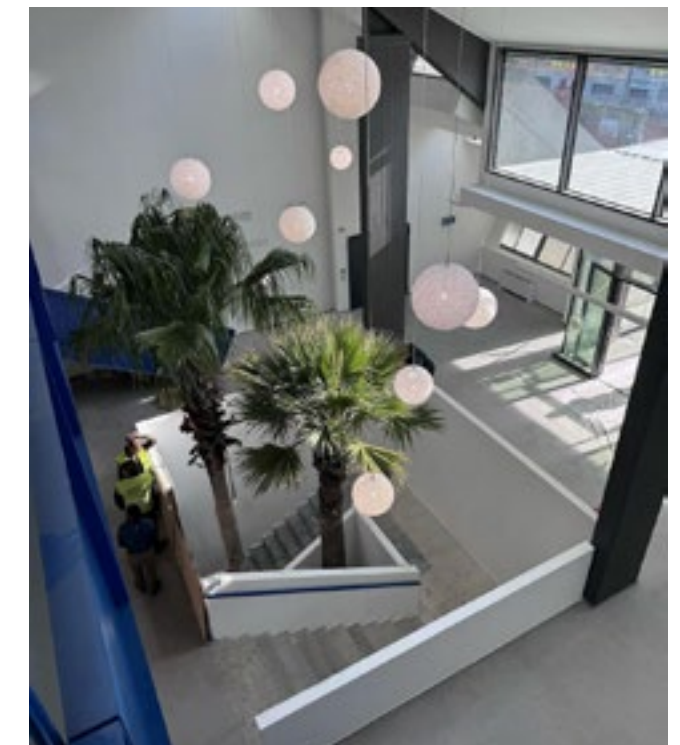
100%

Special cutting of specific “heat pipe waste” led to small rings instead of the usual shredded waste. Ideally used in illumination projects of a certain size, we advise this texture as it creates a lightweight “open” structure, perfect for illumination, but also creates comfortable flexibility in certain sitting objects. Usually available in NEUTRAL or GREY, but on request, it is also available in RED/YELLOW/BLUE & WHITE or any combination of these.



NOMAD is a lounge chair in its version RINGS for an outdoor experience.

Politecnico di Milano -Area Tecnico Edilizia Building ENLAB.





# ecopixel MAXIPIXEL

## ecopixel MAXIPIXEL

50mm pixel irregular

### Composition

PELD

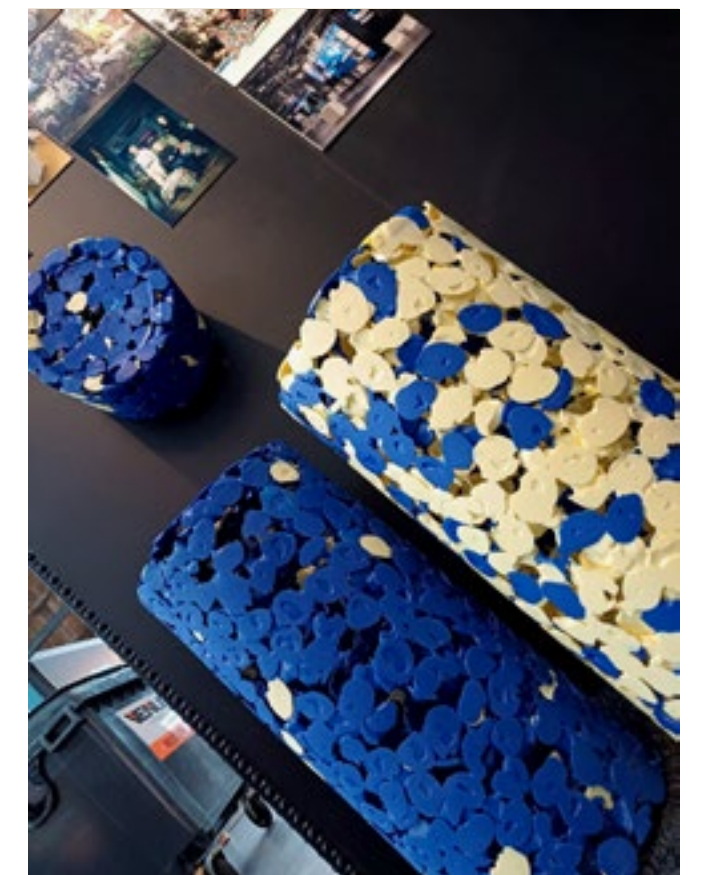
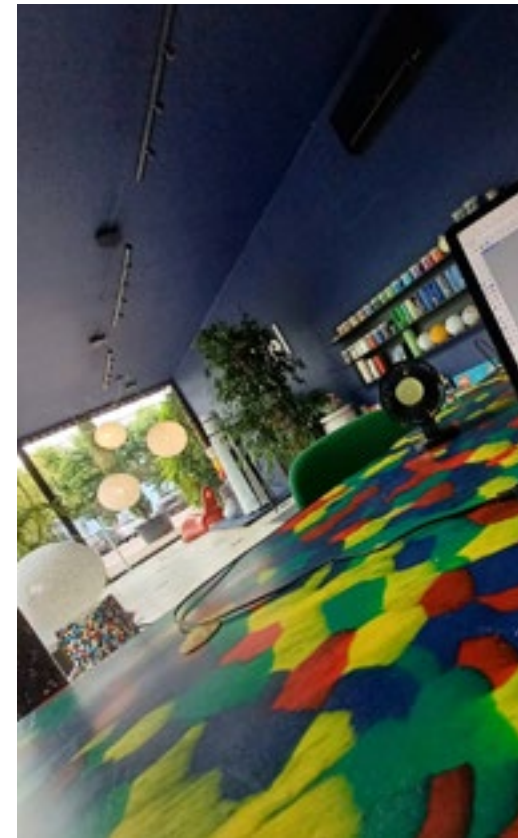
### Source

Post Industrial / Packing

### Recycled content

98%

Our “maximum” pixel size measures 4 to 6 cm. Available only on specific request in any available pigmented color. Due to its size it often creates an open structured skin, unless used in sheet material.





# ecopixel OPEN SKIN

## ecopixel OPEN SKIN

Open pixel structured

### Composition

PERT

### Source

Post Industrial / Construction

### Recycled content

100%

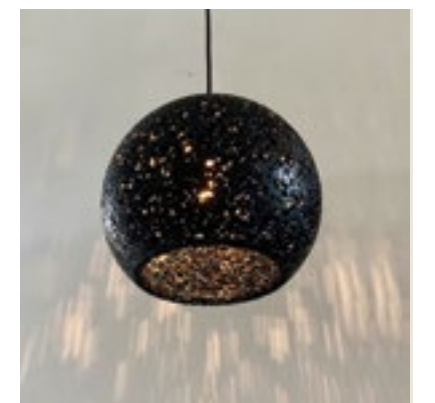
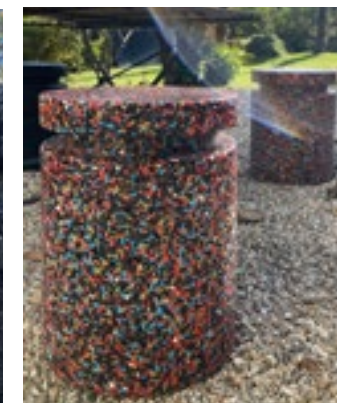
As usual, any product finish is requested to be fully melted and therefore closed as a surface. ECOPIXEL is also available as an “open” structured surface. This feature is not an effect of temperature during production. Instead, it is linked to a certain type of material that, when melted, will automatically create this special effect. Ideally, for illumination, where light magically shines through. Open pixels are also used in outdoor objects, where rainwater will filter through instead of staining on top. Open pixels are available in a limited choice of colors: BLACK/WHITE/NEUTRAL/GREY/RED/YELLOW/BLUE, or any combination of these.



NOMAD is designed by Roger Cos



NOMAD is a lounge chair made from ecopixel PERT waste mélange. 100% circular post-industrial surprisingly comfortable recycled plastic.

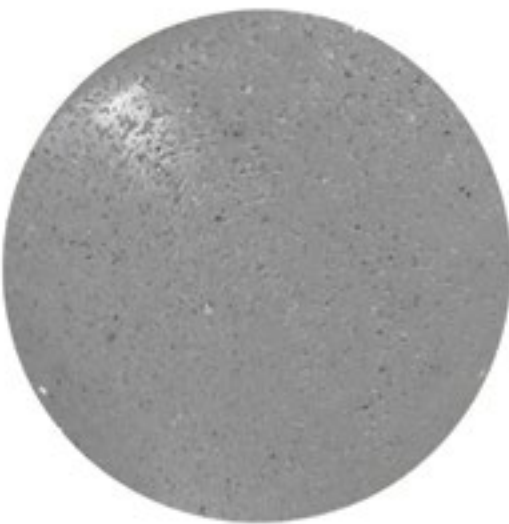




# OPEN SKIN

This "open-pixel" is an effect of structure in the material that gives lightness and softness to the object

This three-dimensional texture makes colors look more vivid, intense and saturated.  
Nevertheless this surface texture allows the light to pass through, creating a play of casual light in the environments.



**open-Grey**  
FLEX-GREY



**open-Blue**  
FLEX-BLUE



**eco-RINGS**  
NEUTRAL



**eco-RINGS**  
GREY



**open-Yellow**  
FLEX-YELLOW



**open-Red**  
FLEX- RED







**Textures by ecopixel®  
made from  
plastic waste materials**

100% made in Italy production ©2025

**SHOWROOM**

Piazza Imbarcadero, Porto Valtravaglia  
(VA) Lago Maggiore Italy

**WORKPLACE**

Via delle Rose 1,  
14010 Dusino San Michele (AT)

**HEADQUARTERS**

Via Altipiano 11, Porto Valtravaglia (VA)  
info@ecopixel.eu | T. +39 3452107207